

THE *Address*

AUGUST 2020



COVER
PRESENTED BY:



FOR MORE INFORMATION
GO TO PAGE 3

Publisher
CAROL HAUN

Managing Editor
KATRENA MCCALL

Editorial
VICKI BROWN

Office Manager
SUSAN HIOTT



Production
AMANDA MOSLEY
ASHLEY ROHDE

Advertising
NICKI MAXEY
ASHLEY RAMSEY
TIFFANY THIGPEN

Walterboro Live

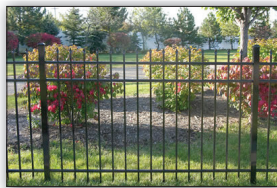
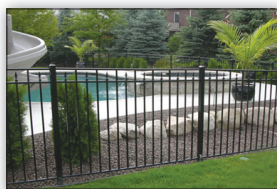
OFFICE LOCATION
THE PRESS AND STANDARD
1025 BELLS HIGHWAY - WALTERBORO, S.C. 29488
843-549-2586 - FAX 843-549-2446

Classifieds & Legals
AMANDA MOSLEY



All advertisements are accepted and published by the publisher on the representation of the agency and/or advertiser that both are authorized to publish the entire contents and subject matter of the advertisement and that the advertisement and that the advertisements do not infringe upon any copyright or trademark.

"GOOD FENCES MAKE GOOD NEIGHBORS"



INCREASED PROTECTION FOR YOUR MOST VALUABLE ASSETS

**Chain Link • Vinyl • Wooden Privacy •
• Field Fence •
Three-Rail Wooden And Many Other
Selections!**

STEEDLEY FENCE

288 Mt. Carmel Rd. • Walterboro, SC • (843) 538-8103



Introducing Benjamin Moore
NOW AVAILABLE AT

WESTBURY'S ACE HARDWARE

1050 Bells Hwy • Walterboro, SC • 843-539-3333
Mon-Fri 8am-6pm • Sat 8am-5pm



Terri Cole
Owner, BIC



John Cole
Owner, Realtor



Melissa Beach
Broker



Kelly Sweatman
Realtor



Niki Hunter
Realtor



Shirley Judy
Office Manager

Featured Listing!



Amazing custom built log home nestled in the quiet woods of Smoaks, SC is waiting for you to come home! Upscale country escape offers all the finest upgrades from the Cypress Logs to the Cherry Wood Floors. Cozy but spacious enough for entertaining from the Great Room to the Dining Room to the Galley Kitchen. The kitchen has granite counters and pendant lights above the bar. A breathtaking master suite has vaulted tongue & groove ceilings, a cedar walk in closet, an oversized bathroom with a separate jetted tub and custom tile open shower. Also a spiral wooden stair case takes you up to the private office on the second floor (large enough for a 4th bedroom). Two more Guest rooms with cedar lined closets and private bathrooms. Front and rear full length southern porches are a must for the will be the perfect spot for bird watching or even the wildlife in their natural environment. The second floor also offers a large den area and wet bar fully stocked with a frig & microwave. For the outdoors man their is a pole barn for tractor and RV parking. This is the perfect retreat for everyday or second home living! The private driveway is a recorded and transferable easement. \$375,000.



WALTERBORO

415 CHURCHILL ROAD - \$189,000
3 BEDROOMS, 2 BATHS - 1,636 SQ. FT.



PRICE REDUCED!

EDISTO ISLAND

209 PALMETTO BOULEVARD - \$650,000
4 BEDROOMS, 3.5 BATHS - 2,118 SQ. FT.



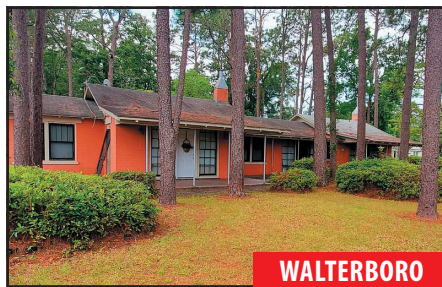
WALTERBORO

208 OAKLAND DRIVE - \$146,000
4 BEDROOMS, 2 BATHS - 2,300 SQ. FT.



WALTERBORO

214 S JEFFERIES BOULEVARD - \$390,000
8 BEDROOMS, 4.5 BATHS - 2,699 SQ. FT.



WALTERBORO

107 SPRUCE STREET - \$120,000
3 BEDROOMS, 2.5 BATHS - 2,052 SQ. FT.



WALTERBORO

10 DOGWOOD LANE - \$328,995
4 BEDROOMS, 2.5 BATHS - 3,560 SQ. FT.

202 Carn Street | Walterboro, SC | oswald-cole.com | 843-549-6611

6 PRIVACY OPTIONS FOR YOUR YARD

If you want your yard to be a private oasis where you can relax unobserved, you'll need to install a privacy screen. Here are six options to consider.

1. Louvers.

The angle of the slats on most louvered privacy screens can be adjusted to allow plenty of natural light in while still shielding your yard from view. They're usually made of wood or steel.

2. Trellises.

Available in many different styles and sizes, trellises look great on their own or as a support for climbing plants. If you want a privacy screen that does double duty, grow fruit-bearing vines along it like cucumber or grape.

3. Curtains.

One easy way to create privacy is to hang large swaths of fabric from a pergola or similar structure. Best of all, they can simply be moved aside when they're not needed.

4. Hedges.

A sturdy hedge creates a natural screen, barrier and home for local wildlife. Cedar is a good choice, but there are many other types of shrubs that make nice hedges.

5. Fences.

Metal and wood fences are a pricier option, but they last a long time and add value to your property. For a modern look, combine materials.

6. Shades.

Typically made of canvas, outdoor shades are great for spaces that don't require constant privacy. Simply pull the shades down when you want them and retract them when you don't.

In addition to shielding you from view, privacy features add visual interest to your yard and make it a more beautiful place to spend your time.



COLLETON MUSEUM & FARMERS MARKET



Café & Craft Shop
with Delicious Food



Family Friendly Events
& Live Entertainment



Explore Lowcountry
History in our Museum

506 East Washington St. | Walterboro | 843-549-2303

Tues: 12pm - 5pm • Wed-Fri: 10am - 5pm • Sat: 10am - 2pm

COLLETONMUSEUM.ORG



Where the most important feature is YOU



If you're looking to build a custom home, designed just the way you want it, look no further than Cook Design Studio, Inc.



COOK DESIGN STUDIO, Inc.

Office: 843-782-4077
Cell: 843-908-3396
scott@cookdesignstudios.com

1374 Bells Highway
Walterboro, SC 29488

202 East 2nd North Street
Summerville, SC 29483

Check out our portfolio online!
cookdesignstudios.com



LOW COUNTRY PEST CONTROL

OF WALTERBORO, INC.

Pest Control • CL-100 (Wood Infestation Report)
Pre & Post Construction Termite Treatments

L. Phil O'Quinn, Jr. - President
310 Pine Ridge Rd. | Walterboro, SC 29488
office: 843-549-7037

1-800-414-4836 | fax: 843-549-6277
www.lowcountrypest.com/home

Keep your home protected and your family safe

Fishburne
DEVELOPMENT CORPORATION
Company

LAND • LOTS • HOMES

We Buy and Sell Land



*Lots
Available*



Summer Glen

Peaceful Atmosphere on the
Quiet Side of Town
Lots Starting in the Mid \$20's
Restricted Lots and Paved Roads

Cypress Pointe

30 Acres of Pristine Property adjoining
Walterboro Wildlife Sanctuary
Gated Entrance for Security
Beautiful Century Old Oaks

126 Hampton St. • Walterboro, SC • 843-549-1581 • fishburnecompany.com



ENTERPRISE BANK

OF SOUTH CAROLINA
SINCE 1920

*Ask about our consumer and
commercial LOANS!*

Bamberg • Barnwell • Blackville • Denmark • Cottageville
Edisto Island • Ehrhardt • Ridgeville
Springfield-Salley • Walterboro • Williston

Visit us online at ebsc.bank



HOW TO TAKE CARE OF STAMPED CONCRETE

Stamped concrete is a durable, textured surface that can be used to construct driveways, walkways and patios. Here's how to ensure this long-lasting material looks beautiful for years to come.

REGULAR UPKEEP

As with any outdoor surface, dirt will eventually accumulate on

your stamped concrete. Sweep it on a regular basis and pressure wash it periodically to get rid of stubborn dirt. If necessary, a cleaning solvent can be used to remove blemishes.

LONG-TERM MAINTENANCE

Apply a new coat of sealant every two or three years to

protect your stamped concrete from water damage and stains caused by oil and gas spills. This will also help maintain the surface's color and luster.

If you have stamped concrete inside your home, it'll require the same type of maintenance as other kinds of flooring. Vacuum

and mop it on a weekly basis or as needed. Although you don't have to reseal a stamped concrete floor to protect it from the elements, consider adding a fresh coat once the original sheen fades.

Ready to Close?



GIVE ME A CALL!!

DEBORAH B. KANE
REAL ESTATE ATTORNEY

112 Forest Hills Rd, Walterboro, SC 29488
(843) 549-1060



**BANK OF THE
LOWCOUNTRY**

Bank Local, Bank Lowcountry.



banklowcountry.com



THE BENEFITS OF INSTALLING A STONE GARDEN WALL

A low stone wall can be a practical and attractive addition to your garden. Here's why you should consider including one in your landscaping.

TO PREVENT EROSION

If your property slopes or has different levels, a stone garden wall can act as a retaining wall and ensure soil retention. Keep in mind that the structure needs to provide adequate drainage.

TO CREATE ZONES

A stone wall is a classic way to delineate areas of your yard such as the garden, patio or pool. It also helps create a designated space for a flowerbed or stairs.

A stone garden wall can be either dry or mortared. A dry stone wall is built by stacking flat stones in an overlapping pattern to create friction and provide stability. The mortared variety, on the other hand, uses mortar to hold the pieces together.



**WE CARE
ABOUT THE FAMILY
UNDER THIS ROOF**

We are the roofing experts and we've...

Got Ya Covered

OFFICE 843-538-2184 • MOBILE 843-893-7384

**Metal • Shingles • Slate
Cedar • Skylights
Gutters & Downspouts**





Get your move on!

4 TIPS FOR MOVING IN THE RAIN

Does it look like it's going to rain on moving day? Here are four tips to ensure the move goes well, despite the bad weather.

1. Dress appropriately

Sturdy rain boots and a waterproof jacket will help keep you dry during your move. A pair of work gloves can help you maintain a firm grip on slick furniture. Make sure you keep a few towels and a change of clothes on hand for later.

2. Protect your belongings

Cover your furniture in heavy blankets or plastic wrap, particularly wooden, upholstered

and metal pieces. Use garbage bags to protect your pillows, clothes and artwork. If possible, pack books and documents in waterproof bins. Otherwise, seal delicate items in plastic bags before putting them in cardboard boxes.

3. Cover the floor

Lay down tarps, old towels or cardboard boxes to avoid tracking mud inside the home and to prevent anyone from slipping on a wet floor. Line the bottom of the truck as well to ensure it's waterproof.

4. Create an assembly line

Assign specific people to ferry

items to and from the house while others gather your belongings by the door or pack them in the truck. This will help keep the inside of your home and the truck clean and dry. Only move items as they're needed to minimize their time in the rain. If possible, hang a tarp over the space between the door and the truck.

Once the truck is unloaded, quickly unpack all wet and damp boxes to avoid water damage. Additionally, make sure the wires for your electronics are completely dry before plugging them in.

REASONS TO HIRE A PROFESSIONAL MOVER

If you have a move coming up, hiring a professional moving company is a good idea. In addition to giving you peace of mind, here are the benefits of leaving this job to the experts.

INSURANCE

Most professional movers offer coverage in case your items are lost or damaged during the move. To avoid unpleasant surprises, carefully consult their insurance policy before choosing a company.

EFFICIENCY

Since you don't need to haul boxes, you can focus on cleaning and starting to unpack while the movers take care of loading and unloading the truck. This can be a great time saver.

EQUIPMENT

The cost of hiring a moving company includes all the necessary equipment, so you don't have to worry about renting or purchasing blankets, straps and dollies. The movers will also take care of the truck and be licensed to drive it.

EXPERIENCE

Professional movers know how to safely pack and transport various types of furniture, appliances and electronics. Their experience helps them avoid damage and injury when carrying heavy or delicate pieces on staircases and around tight corners.

RELIABILITY

If you hire movers, you won't have to depend on the availability of family and friends whose schedules might not line up and who may need to cancel on you at the last minute.

In the end, moving on your own might not save you as much money as you think. You still have to rent equipment and a truck. Plus, you'll likely want to supply pizza, beer and soft drinks for your volunteer crew.

HOW TO LOAD A MOVING TRUCK

A properly packed truck is the key to a successful move. It ensures you avoid multiple trips and reduces the risk of damaging your belongings. Here are a few guidelines to help you optimize the space in your moving truck.

- Disassemble your furniture as much as possible (i.e. remove table legs)
- Use boxes that are the same size to make stacking easier
- Assess what needs to go in the truck and make a plan before you start

- Load the heaviest furniture first and make sure the weight is evenly distributed at the front and on the sides of the truck
- Place boxes in the empty spaces of furniture, such as on shelves
- Fill the gaps between furniture with items that don't stack well, such as lamps
- Stack boxes from heaviest to lightest
- Pack items snugly to prevent them from shifting
- Protect wood furniture and other items you don't want to get scratched with moving blankets
- Tuck framed pictures and mirrors between mattresses and cushions
- Put plants and boxed items you'll need upon arrival (i.e. cleaning supplies) in the truck last
- Use straps to secure furniture and stacks of boxes to the rails inside the truck

Finally, if you're worried about damaging fragile objects, transport them in your car instead. To ensure the truck is packed securely, consider hiring professional movers.



A SIMPLE TRICK FOR THE PERFECT FLOWER ARRANGEMENT

1. Pick your vase and get enough flowers to fill the opening. I picked hydrangeas to arrange (my very favorite) but this technique works well with any kind of flower and any vase with a medium to large opening. Also grab some tape and plant scissors *hint, the larger the flower the less flowers you will need to fill your vase

2. Tape off a grid pattern along the opening of your vase. I made my square openings about 2" x 2", but you can make them a little smaller for a more narrow vase.

3. Measure how deep your vase is and trim your flowers to that length. Pull off any extra leaves on the bottom of the stem, but don't throw them out just yet.

4. Stick the flowers in the openings of the tape grid you created. The grid allows the flowers in the middle to stay propped up to make the vase look nice and full. Once you have filled any holes with flowers, fill around the edges and a few middle spots with the extra leaves.

www.elleapparelblog.com



PALMETTO
Exterminators
Inc.

843-549-1531

Palmetto Exterminators provides superior pest control, termite control and mosquito control service in Beaufort, Bluffton, Charleston, Columbia, Greenville, Hilton Head, Myrtle Beach, Summerville and Walterboro, SC as well as Charlotte, NC.

Family Owned & Operated Since 1960

PALMETTOEXTERMINATORS.NET
PALMETTOMOSQUITOCONTROL.COM



We can tune-up or update your heating system and save you hundreds each month!

RESIDENTIAL • COMMERCIAL • INDUSTRIAL
SALES • SERVICE • INSTALLATION

HAMPTON 803-914-0900

390 Sandy Springs Cir.



\$339,000

The 3 bedroom, 2.5 Bathroom home sits on 4 acres. Features a full front porch, cathedral ceiling in family room, fireplace, and hardwood floors. Sun room with large hot tub. The master suite is located downstairs with a walk-in closet and bathroom. Upstairs there are two bedrooms and a study with built-in bookshelves.

414 Churchill Rd.



\$209,000

Come see this spacious 2796+/- sq. foot home located in the sought after Forest Hills Subdivision! A brick ranch, this 3 bedroom, 2 bath home is situated on five lots. There are hardwood floors throughout most of the home, along with tile floors in the kitchen. Don't let this one pass you by, come see it today! Home is being sold as is.

451 Better Bu



Welcome Home to the Lowcountry! Craftsman style home sits on 15 acres outside of Walterboro, SC. The home is with many features: knotty pine wood beautiful wooden cabinets, and general features.

We Would Love The Opportunity To Listing Your Home Has Never J

1190 Doctors Creek Rd.



\$169,900

Brand new 2020 live oak home! Move-in ready! This home sits on 1.2 acres. This 1,352 sq ft home has 3 bedrooms, 2 bathrooms. Brick underpinning, wrought iron railings on the front porch, and a large pergola on the back porch. All new appliances convey as well as a brand new hvac unit. Don't miss this opportunity!

49 Wexford Way



\$165,000

Welcome to 49 Wexford Way located in Blythehaven Subdivision! This wonderful home boasts just over 1500 sq ft that includes 3 bedrooms and 2 bathrooms. Master bedroom with walk-in closet and double vanity in bathroom. 2 storage sheds in side yard convey with the sell of the home. Don't miss this wonderful opportunity with a VERY motivated seller, this beauty won't last long!!

188 Lakewood



Longleaf! This is a custom built home with 3 bedrooms, 2 baths on a big lot. Built house with hall down the middle with a room and kitchen with cement floor. Master closets, with en suite, soaking tub with jet. Wine fridge. Stainless steel appliances in

COLDWELL BANKER

TODD LAND AGENCY

We NEVER Stop Moving...
in the Lowcountry.

Serving Colleton, Hampton, Dorchester and Surrounding Counties

Each office is independently owned and operated
342 S. Jefferies Blvd. • Walterboro
BY APPOINTMENT ONLY

843-549-7100

Connect to our complete
list of homes at
www.coldwellbankerrealestate.com
or www.tlandagency.com

**Not responsible for typographical errors.*

Quilt Way



\$429,500

Country! This contemporary
acres of land about 12 miles
me is custom built of wood
wood floors, gas cook top,
generator, and many other

102 Pansy St.



\$79,900

Investor! First time home buyer! - A 2 bedroom, 2 bath home
with room for 3rd bedroom. Family room with fireplace. Wood
floors. Attic storage, Outside workshop. Close to town &
schools. Call today!

Vacant Land & Lots

UNDER CONTRACT Land

0 Hendersonville Highway - Walterboro
240 Acres - \$445,000

Land

8654 Cane Branch Road - Walterboro
108 Acres - \$350,000

UNDER CONTRACT Land

0 Harrison Road - Smoaks
16.73 Acres - \$63,000

Land

0 Candlelight Drive - Walterboro
\$10,500

Lot

0 Waverly Road - Walterboro
\$10,500

UNDER CONTRACT Lot

Cottonwood - Walterboro
.8 Acres

Lot

167 Abberley Drive - Green Pond
Well & Septic - \$25,000

Lot

2 Lots in Silverhill Subdivision - Walterboro
Corner of Teakwood & Devon Court
\$30,000 together

To Sell Your Home. Been This Easy.

Wood Drive



\$285,000

Home in 2017. Three
Built like a shotgun style
with steps down to great
or. Master bedroom has 2
with jets, separate shower.
ices in kitchen. Call today!

1323 Clatty Farm Rd.



\$409,500

73 Acre COUNTRY RETREAT IN SMOAKS: FLY IN OR DRIVE
IN! open pasture which has been used for a private air strip,
merchantable timber, great hunting and wildlife, 2 Bedroom,
2 bath rustic pine lodge, 2 Quonset huts for hangar and shed
and 2 carports



Todd Land
Broker
843-893-8394



Robin Land
Agent
843-893-8075



Marilyn Cleland
Agent
843-908-0674



Tiffany Fender
Agent
843-599-1807



Robert Mixon
Agent
843-908-0572



Renee White
Agent
843-909-0578



Mark T. Williams
Agent
843-893-7126



Adrienne Land
Agent
843-908-1738



Samantha Heape
Agent
803-942-0671



TYPES OF WALL TRIM AND MOLDINGS

There are a variety of wall trims and moldings you can use to decorate your home. Here are the main ones you should know about.

- **Pediment.** This decorative molding is often found above windows and doors. It's typically round or triangular and can range from simple to very ornate.
- **Crown.** Also known as a cornice, this type of molding gets placed at the juncture between a wall and ceiling.
- **Wainscoting.** Common in older, more formal homes, this is a panel that covers the bottom half or third of a wall.

It's often painted a different color from the rest of the room to provide contrast.

- **Chair rail.** This thin, horizontal molding is usually placed about a third of the way up the wall. Chair rails were once routinely installed to protect walls from the backs of chairs. These days, they typically serve as decoration. They can be used on their own or in combination with wainscoting.
- **Picture rail.** Similar to a chair rail but usually placed higher on the wall, this type of molding is used to hang paintings and pictures without nails. It's ideal for renters

and homeowners who don't want to put holes in the walls.

- **Mantel.** A mantel or mantelpiece goes above and around a fireplace. It usually includes a wide shelf for displaying art and other objects.

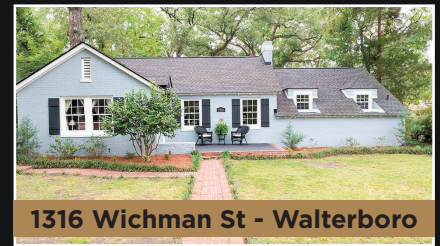
Wall trim can be decorated in a variety of ways, but many people paint it white or a color that contrasts with the surrounding walls. Alternatively, the color of the moldings can be matched to the walls for a more streamlined effect.



"Service You Deserve With A Person You Trust."

*Thinking about
Selling. Now
is the time!
Call Us Today*

843-782-7800



1316 Wichman St - Walterboro

3 Bedroom, 1 Bath. History meets modern living in this incredible English style cottage home located in downtown Walterboro.
\$209,000

Amazing Waterfront Properties!

340 Ashepoo Dr - Green Pond



3 Bedroom, 2 Bath
You can now escape to your own oasis on the Ashepoo River and still be within an hour from Beaufort and Charleston..
\$420,000

93 Deepwater Ave - Round O



3 Bedroom, 2 Bath
Imagine waking up and walking outside to hear the sound of the Edisto River and wildlife in your very own backyard.
\$274,999

360 Blackwater Trail - Round O



3 Bedroom, 2 Bath
Year round or vacation home. An outdoors-men's dream with 375-/+ feet of private water right out your back door!
\$299,989

1341 Sandy Landing Ln - Round O



2 Bedroom, 2 Bath
Welcome to 1341 Sandy Landing located on the Edisto River, one of the longest flowing black rivers in North America.
\$199,999



colletonrealty.com | 259 E. Washington St. Walterboro, SC





Before



After

Residential and Commercial
CALL 843-635-3185

Flowers & Beds
Mulching
Pine Straw
Tree & Shrubbery
Trimming
Bush Hogging
Lawn Mowing,
Trimming & Edging
Fencing



Powered by The Press

Walterboro
Live

Come check out our
NEWLY REDESIGNED
website
walterborolive.com



Termites
Are Swarming...
Are You Ready?

Ask about our new
MOSQUITO BARRIER TREATMENT SERVICES
"Homeowners take back your backyard"



We're just a phone call away™
1.800.633.0694



Kesia L. Brown Ins Agency Inc
Kesia L. Brown, Agent
270 Robertson Blvd
Walterboro, SC 29488
Bus: 843-549-1880

**Give your home
the protection
it deserves.**

Your home is where you make
some of your best memories,
and that's worth protecting.
I'm here to help.
LET'S TALK TODAY.



State Farm Fire and Casualty Company, State Farm General Insurance Company, Bloomington, IL
State Farm Florida Insurance Company, Winter Haven, FL
State Farm Lloyds, Richardson, TX

1708136

“The Right Agent Makes All The Difference”



CAROLINA HOMES & LAND REALTY



Buying, Selling a home or vacant land, we offer service you deserve and real estate agents you can trust. We know Walterboro and surrounding areas, and we have a proven track record of selling property in the Lowcountry Region. Our agents will go above and beyond to make your real estate dreams a reality.



Robin E. Harrison
Owner, BIC
843-866-3163
rbbh@lowcountry.com



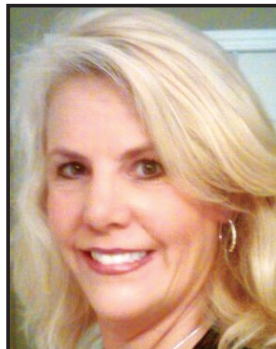
Sara P. White
Broker
843-893-7004
white@lowcountry.com



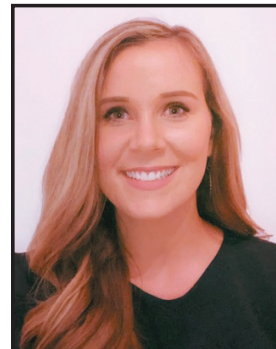
Joan Bruce
Broker
843-893-6561
joanbruce57@gmail.com



Vicki Carl
Realtor
843-635-1900
vcarl1010@gmail.com



Debbie McMillen
Realtor
843-908-9563
debbiemc116@gmail.com



Rebecca Alberts
Realtor
843-908-1427
r_alberts@yahoo.com

1229 Bells Hwy • Walterboro, SC • 843-539-4444

View our listings online at carolinahomesandlandrealty.net



RESIDENTIAL & COMMERCIAL

35+ Years in Business



SPECIALIZING IN:
DESIGN & CONSTRUCTION
IN-GROUND POOLS
IN-GROUND HOT-TUBS
GENERAL REPAIR
STRUCTURAL REPAIR
MAINTENANCE/SERVICING



843-635-5944

WALTERBORO, SC

DAVID'S PAINTING, LLC

- Pressure washing
- Drywall Repair
- Specializing in Re-Paint

843-909-0896



**David
Stofflet
Owner**



INDOOR HANGING HERB GARDEN

ITEMS NEEDED

Eight 4" clay pots (you can find these at local hardware/craft stores)
White spray paint
Eight rubber bands
Optional small tube of accent paint to color the bottom of the pots
One small foam paintbrush
One roll of 4-ply jute rope
Two 7/8 x 36" oak dowel rods
Eight curtain hanging rings
Four curtain brackets to hold the rods
Potting soil and whatever herbs you'd like to grow!

INSTRUCTIONS

1. Tape the inside edge of your pots to keep paint from seeping into the soil, then spray paint clay pots white and let them dry completely.
2. *Optional: only if you're adding an accent color to pots* Place rubber band around the pot where your accent color will begin to create a clean line when painting. Paint accent layer with foam brush.
3. Cut jute into eight 35" strips (adjust length depending on the height of your window and how low you want pots to hang).
4. Tie an overhand knot on each end of the jute pieces.
5. Wrap one end of the jute around a pot and tuck the overhand knot underneath itself to anchor. (You're basically tying another overhand knot using the existing knot.)
6. Place a piece of paper at the bottom of each pot before planting. (This is so that water can drain through your plants and eventually out of the bottom of their pots without dirt pouring everywhere. All you'll need to do is wipe up a little excess water.)
7. Use potting soil and plant those herbs.
8. Thread dowel rods through the rings (four each) and hang on brackets.
9. Raise your pot, string the free end of the jute through one of your curtain rings and then secure it on the opposite side of the pot with a final overhand knot. Do this with all eight pots. (You could also tie your pots to their rings before you put them on the rods, depending on how much clearance you have on each side of your window.)
10. Enjoy!

www.thebirdandhersong.com

MAP OF WALTERBORO





COLLETON MEDICAL CENTER IS A SMALL TOWN HOSPITAL WITH BIG TOWN SERVICES

Located in the heart of Walterboro, Colleton Medical has a long-standing history as a leader in the community with a commitment to patient-centered care. CMC is an HCA facility with 135 beds, offering both inpatient and outpatient medical services, as well as 24/7 emergency care for adults and children.

Expert physicians and staff combined with outstanding medical treatment leads to quality outcomes for patients. "But it's the compassionate and caring touch of our Colleton Medical Center family that makes the extra difference to our patients and their families," said CEO Jimmy Hiott.

Services include behavioral health, diagnostic imaging, emergency care, lab services, orthopedics, pediatric, physical therapy,

rehabilitation, sleep disorders, surgery, women's health and wound management.

"I am proud to share with you that, as a result of our skilled and dedicated staff, physicians and volunteers, Colleton Medical Center has been named a top performer on Key Quality Measures by The Joint Commission for five consecutive years. CMC ranks in the top 15 percent of U.S. hospitals for quality care. Committed to quality services and compassionate care, CMC continues to expand and advance to meet the needs of a growing community," Hiott said.

"We invite you to call or visit our hospital and discover how our broad range of services can support your healthcare and wellness needs."

**COME CHECK
OUT OUR
NEWEST
ADDITION!**



**Interested in
becoming a new
member?**

**Pre-register
online!**

ADULT CLASSES

Pound
Aerobics
Chair Aerobics
Lunch Express
Dance
Core Strength
Zumba

Fitness Fusion
Line Dance
Yoga
Step Aerobics
Cross Training
Kick-Box Fusion
Body Sculpting

View the weekly schedule at
rec.colletoncounty.org

FITNESS CENTER

Open Mon-Fri 5:30am-8:00pm
Sat 8:30am-12:30pm
Sun 1:00pm-6:00pm

Daily, monthly, yearly rates &
reduced family plans available

280 Recreation Lane | Walterboro, SC • 843-538-3031
rec.colletoncounty.org



MAKE YOUR HOME
simply yours
with custom treatments and decor



We make **custom** window
treatments, bedding, pillows,
table linens, upholstery...
you name it - we can make it!

We also sell chic home decor.

SIMPLY YOURS INTERIORS

Rocki Hovenga, Owner
301 N. Lucas Street | Walterboro, SC | 843-408-2412 | simplyyoursinteriors@outlook.com
SimplyYoursInteriors.com

VIRTUAL REALITY: THE FUTURE OF REAL ESTATE

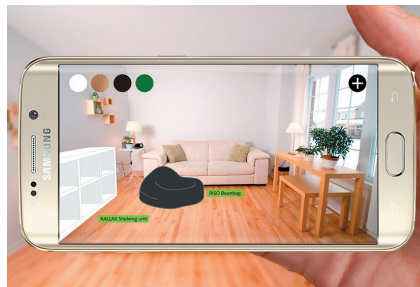


Virtual reality (VR) is a powerful tool that's revolutionizing the real estate industry. It refers to the computer simulation of three-dimensional environments that can be interacted with by a person. Here are three key applications of VR in the real estate industry.



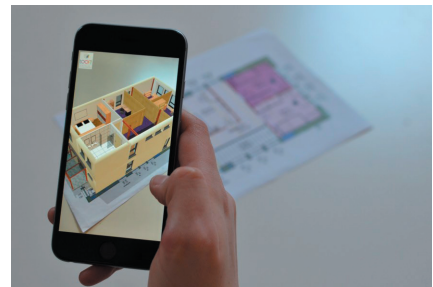
VIRTUAL PROPERTY TOURS.

VR can be used to allow people to virtually tour countless properties from one location. By simply putting on a VR headset, you'll be able to experience immersive, 3D walkthroughs of dozens of properties so you can decide which ones are worth visiting in person.



VIRTUAL HOME STAGING.

Studies show that furnished homes sell better than unfurnished ones, but investing in furniture and decor for staging an empty house is costly. Using VR technology allows you to experience what a property will look like when it's completely furnished.



VR ARCHITECTURAL VISUALIZATION.

VR can also be used to market properties that haven't been built yet, such as new condo developments. With VR tours, interested buyers can see what the homes will eventually look like.

VR in real estate is a game changer for buyers and agents alike. For buyers, it saves time and allows them to browse for homes across great distances. For real estate agents, VR tools pay off in terms of heightened global outreach, increased sales and more satisfied clients. It's predicted that VR will become commonly used in the real estate business in the years to come.



Colleton County School District

500 Forest Circle | Walterboro, S.C. 29488 | 843-782-4510

1st-12th Grade

Name	Address	Phone
Black Street Early Childhood Center	256 Smith St. Walterboro, 29488	843-782-4516
Bells Elementary School	12088 Bells Hwy. Ruffin, 29488	843-782-0012
Cottageville Elementary School	648 Peirce Rd. Cottageville, 29435	843-782-4528
Hendersonville Elementary School	6089 Hendersonville Hwy. Walterboro, 29488	843-782-0027
Forest Hills Elementary School	633 Hiers Corner Rd. Walterboro, 29488	843-782-4512
Northside Elementary School	1929 Industrial Rd. Walterboro, 29488	843-782-0015
Colleton County Middle School	1379 Tuskegee Airmen Dr. Walterboro, 29488	843-782-0040
Colleton County Alternative School	1379 Tuskegee Airmen Dr. Walterboro, 29488	843-782-0050
Colleton County High School	150 Cougar Nation Dr. Walterboro, 29488	843-782-0031
Thunderbolt Career and Technology Center	1069 Industrial Rd. Walterboro, 29488	843-782-4514

SAPP LAW FIRM

BENJAMIN C.P. SAPP
ATTORNEY AT LAW

Personal Injury • Motor Vehicle Accidents •
Family Law • Real Estate
Probate & Estate Administration • Wills • Criminal Defense

125 JEFFERIES BLVD. • WALTERBORO, SC • 843-549-5923
WWW.SAPPSC.COM

*Freedom to take your bank with you,
no matter where you are.*

DOWNLOAD OUR MOBILE APP

You can check balances while shopping, transfer funds at the office, receive and pay your bills online from the comfort of your living room and so much more!

1st federal

of South Carolina

Locations in Walterboro and Edisto!

300 Robertson Blvd. • Walterboro, SC 29488 • (843) 549-2526
428 Highway 174 • Edisto Island, SC 29438 • (843) 869-9734

Checking • Savings • Loans • Online & Mobile Banking
E-Alerts • Bill Pay • E-Statements • Mobile Deposits



www.1stfederalofsc.com

Member
FDIC



GOAL: Happy Customers SOLUTION: Use Super-Sod Grasses



TifTuf Bermuda, Drought Tolerance Just Got a New Standard

- The most drought tolerant turf.
- TifTuf uses 38% less water than Tifway and will pay for itself in reduced water bills.
- Maintains acceptable turf quality and aesthetics under drought stress.



Zeon Zoysia

- Super-Sod now grows Zeon Zoysia.
- Dark green and medium-fine textured; it's easier to maintain than other fine-textured types.
- Shade tolerant; a turfgrass that's widely adaptable to full sun or moderate shade.
- Makes a lawn with a lush, dense growth habit.



We've Got You Covered

- Pick up sod from more locations than anyone
- Full truck loads and small quantities delivered
- Request a Free Quote on supersod.com

1-888-360-1125



www.supersod.com

3086 Five Chop Road • Orangeburg, SC
800-255-0928

