



Prom Group
takes over
golf courses

Page 2



St. Paul
gears up for
bike trails

Page 5



Sunrise Market:
from Iron Range
to St. Paul

Page 6

Midway Como

Monitor



Your community newspaper
since 1975

February 2014 • Vol. 39 No. 10

www.MonitorSaintPaul.com

21,000 Circulation

Extreme makeover: Seal Island edition

Como requests state to approve \$13.8 million to update the seal and sea lion exhibit to redo Sparky's home

By **TESHA M. CHRISTENSEN**

Como Park Zoo and Conservatory is ready to give Sparky's home an extreme makeover.

To move forward, Como is asking state legislators to approve \$13.8 million in general obligation bonds. Another \$1 million will come from private donations.

"Sparky is an ambassador for conservation education, through the 2 million plus visitors to Como Park Zoo and Conservatory each year, including 500,000 school age kids taking part of some educational programming," said Como's Campus Manager Michelle Furrer.

"Today we see multi-generations visiting and making connections with the animals like Sparky and our hope is that this will continue for generations."

There was no funding set aside for Como Zoo in Gov. Mark Dayton's proposed bonding request to the Legislature, but

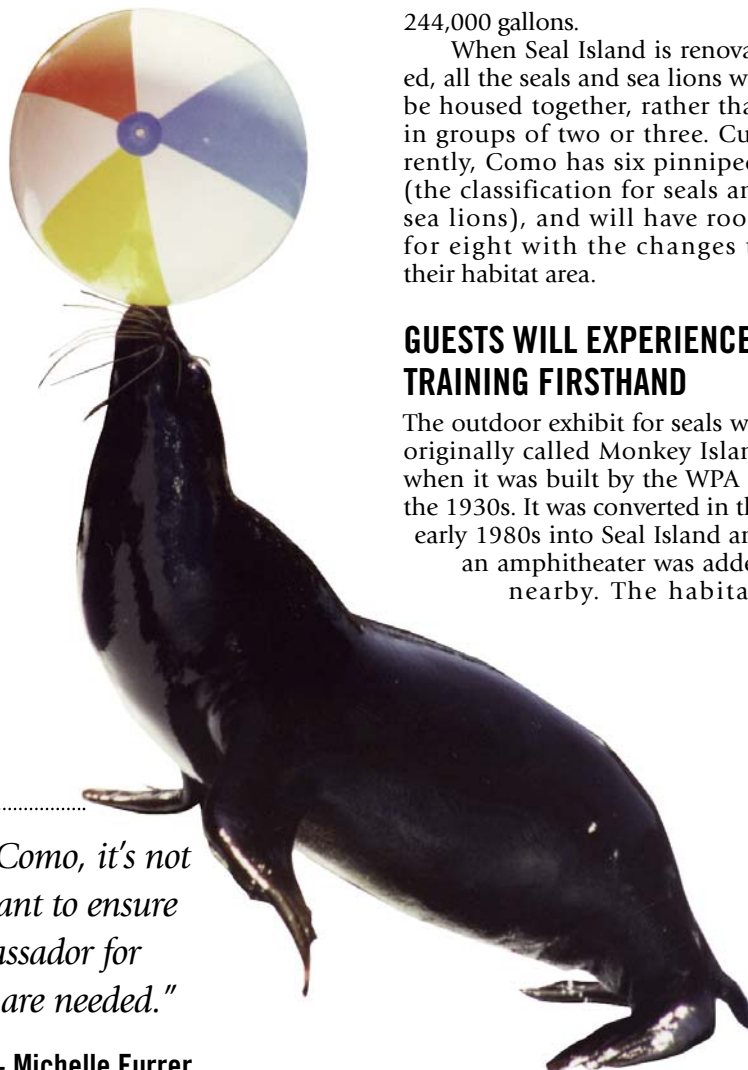
there was \$8.9 million in transportation and access improvements for the surrounding Como Regional Park. There was, however, \$53.3 million in bonding requests from the Minnesota Zoo in Apple Valley.

PROJECT WILL OCCUPY SAME AREA AT COMO

Currently, the seals and sea lions split their time between Seal Island in the summer and the Marine Mammal Building in the winter. Sparky is housed year-round in a separate pool from other seals and sea lions.

"Como has been a part of Minnesota's lives for over 100 years and Sparky for nearly 60 years," observed Furrer.

The project being planned will use the same 64,500 square feet that currently houses Seal Island and the amphitheater. However, the amount of pool area will jump from 146,000 gallons to



244,000 gallons.

When Seal Island is renovated, all the seals and sea lions will be housed together, rather than in groups of two or three. Currently, Como has six pinnipeds (the classification for seals and sea lions), and will have room for eight with the changes to their habitat area.

GUESTS WILL EXPERIENCE TRAINING FIRSTHAND

The outdoor exhibit for seals was originally called Monkey Island when it was built by the WPA in the 1930s. It was converted in the early 1980s into Seal Island and an amphitheater was added nearby. The habitats

were not built with training in mind, nor do they meet updated standards of animal management, according to Furrer.

With its freshwater pools, Seal Island no longer meets federal requirements. The renovation plan replaces the freshwater area with two saltwater pools. These will provide zoo guests with both underwater and above water viewing, and guests will be able to see the animals in a more naturalistic habitat year round. Plus, visitors will be able to experience the operant conditioning training of the animals firsthand.

Because the current facility was not designed with training in mind, Como trainers face the challenge of needing a trainer for each animal during sessions. "This means that if there are four animals on the island, we need four trainers," explained Senior Keeper Allison Jungheim.

The new construction will give trainers more options. Using the principals of positive enforcement, the pinnipeds at Como receive 2-3 training sessions a day, during which they get most of their daily food.

"Training is mentally stimulating and very enriching for them," said Jungheim.

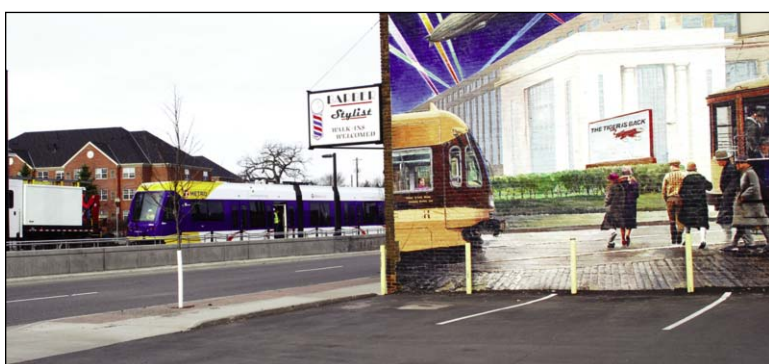
CONTINUED ON PAGE 5

"With the development of these last series of projects for Como, it's not about getting bigger but doing what we do better. We want to ensure that, for generations to come, Sparky will be an ambassador for conservation and education. In order to do this updates are needed."

- Michelle Furrer
Como Campus Manager

St. Paul buzzing with anticipation...

Green Line readies for June 14 opening



Light rail trains will start running between downtown St. Paul and Minneapolis on June 14, ending more than three decades' debate, planning and construction.

By **JANE MCCLURE**

Area residents and business owners who have watched light rail vehicles travel up and down University Avenue over the past several months now can mark their calendars. Light rail trains will start running between downtown St. Paul and Minneapolis on June 14, ending more than three decades' debate, planning and construction. Despite brutally cold weather, many people turned out to celebrate the January 22 opening announcement near Union Depot in downtown St. Paul.

The 11-mile line, long known as the Central Corridor, will be known as the Green Line. It will be the Twin Cities' second light rail line, opening about a decade after Minneapolis' Hiawatha, or Blue Line, began service.

"Starting service 60 years to the month after the last streetcar

left the Twin Cities is fitting," said Metropolitan Council Chair Susan Haigh. "For me, seeing two vibrant downtowns, numerous job, education and medical centers, and, tens of thousands of

people connected by this project is the most exciting part."

Area business groups and district councils will work with

CONTINUED ON PAGE 4

If you aren't a Monitor Facebook friend, you might have missed this last month:

St. Paul Police Western District community meeting dates • Maternity of Mary St. Andrew School Open House • Area locations for Blood Donor Drive • Snow Emergency Declarations • Hamline Elementary's School Showcase and Winter Warm Up • Fireside Reading Series starts • The Women's Drum Center Co-ed Drum Circle • Local resident Norah Rendell to perform a solo concert • In Breaking News, first announcement of the start date of light rail on University • Free Fix-It Clinic • Local resident Christine Huff to teach a free class on Creative Activism • Breaking news of the winter medallion found by the historic street car station • Political caucus reminder • Keystone senior book club meets • Como Zoo's Amanda the Orangutan used her prognosticating prowess to pick the winner of Super Bowl XLVIII (she picked wrong) • Public hearing on draft Hamline Midway Community Plan • AARP Driver Refresher Course • Central Lutheran School Open House and Chili Cook-Off • Harriet Alexander Nature Center open house

Monitor

1885 University Ave.
St. Paul, MN 55104
651-645-7045

Publishers:

Calvin deRuyter, Tim Nelson

Managing Editor:

Denis Woulfe

Advertising:

Denis Woulfe (651-917-4183)

Photographer:

Stefanie Berres

Production/Illustrations:

Bob Wasiluk

Contributing Writers:

Deborah Brotz, Jane McClure,
Jan Willms, Tesha M. Christensen,
Jon Knox, Kyle Mianulli, Jill Boogren

Now, communicate with the Monitor electronically!

Now it's easier than ever to keep in touch with the Monitor. Letters to the editor and news releases for publication can be sent via e-mail at denis@deruyternelson.com. Be sure to send copy in the body of the e-mail, and please mark whether the copy is a letter, a news release for publication, or perhaps just your thoughts on the last issue. Don't forget to write!

And check us out on the web at:
www.MonitorSaintPaul.com

The Monitor is a monthly community publication in the Midway and Como areas of St. Paul, owned and operated by deRuyter-Nelson Publications, Inc. All correspondence should be sent to the Monitor, 1885 University Ave., #110, St. Paul, MN 55104. Editorial and advertising offices can be reached at 651-917-4183. Our fax number is 651-645-4780.

All rights reserved. The contents of the Monitor cannot be reproduced without express written permission of the publisher. Copyright ©2013.

Next deadline:
March 3

Next issue:
March 13

CHURCH OF ST. ANTHONY

Mons. Thomas Bigelow
"A 21st Century Church"
Sunday Mass at 1:15 p.m.
Collocated in:
Hamline United Methodist Church
1514 Englewood Avenue
612-702-4770
Email: nativeamerican.2@juno.com
"An Old Catholic Community"

Mosaic
ON A STICK

1564 Lafond Avenue
Saint Paul, MN 55104
651-645-6600
www.mosaiconastick.com

An artist-owned
mosaic supply shop,
community classroom
& artist studio

Longtime St. Paul company to run Como Golf Course

City Council approves 5-year agreement with Prom Management Group

By TESHA M. CHRISTENSEN

As a boy, Bill Given of Prom Management Group, Inc. played golf at Como. As a man, he and his brother will be running things.

St. Paul has reached a five-year agreement with Prom Management Group to manage both Como and Phalen golf courses. The city council approved the agreement at its Jan. 22 meeting on a 4-3 vote, with Councilmembers Bostrom, Thune and Tolbert voting against it.

"I am most excited to see this new adventure become successful and profitable for both our company and the city," said Given. "If we can accomplish this, and provide exemplar customer service and products, this will be a win for everyone, including those who pay taxes in the city and do not play golf."

TIES TO ST. PAUL

Bill and his brother Tom were born and raised in St. Paul. "We have a very rich history in St. Paul, spanning more than three generations," said Given.

The company began in the 1940s when their father, Harry Given, visited the original Prom Ballroom on University Ave. to do advertising and promotion for the popular dance hall. After a few years, Harry became the general manager, and eventually the owner.

During the late 1980s, Tom and Bill brought the company



Bill and his brother Tom Given were born and raised in St. Paul. "We have a very rich history in St. Paul, spanning more than three generations," said Bill. Although Prom is now based out of Oakdale, it began in St. Paul at the old Prom Ballroom on University Ave.

from their father and shifted it into catering, event management and concessions operations. They operated out of the Prom Expo

Center on Smith Ave. in St. Paul, and became involved in the catering aspects of local and national PGA tournaments. As the busi-

ness grew, they expanded into a new 40,000-square-foot facility in Oakdale.

Today, Prom Management Group caters to over 30 golf tournaments nationwide, including the: PGA Tour, Champion's Tour, USGA National Championships, the LPGA Tour, the U.S. Open, U.S. Women's Open, The Players Championship, The Presidents Cup and the 3M Championship-TPC of the Twin Cities in Blaine, Minn.

"We took over Theodore Wirth in Minneapolis and Columbia in Minneapolis seven years ago, and have doubled the food and beverage revenues in that time," said Bill. "We have expanded food options, specials, beverage options, as well as service and catered offerings that the patrons never had previous to our arrival."

"Many years ago, we did the same at Keller Golf course, and we have been very successful at that venue for 28 years."

A NEW BUSINESS VENTURE

Como will represent a new business venture for Prom, as it will be the first time they have managed tasks outside food and special events, but the Givens are looking forward to the prospect.

"This is a natural expansion of our golf interests, and a platform that we believe will have many more opportunities," said Bill. "We believe we can deliver a better customer service experience for our patrons, expand menu and food and beverage options, and still produce a profit. I am most excited about the structure and development of this new business segment."

AGREEMENT HELPED CITY KEEP AAA RATING

Prom will assume total financial responsibility for losses or gains at the golf courses. Prom will pay the city 4% of gross revenues from both courses, with a minimum

CONTINUED ON PAGE 8

Black Bear Crossing may remain at Como Pavilion

By TESHA M. CHRISTENSEN

Black Bear Crossings may remain at the Como Pavilion this year.

The city and Black Bear Crossings are currently involved in litigation regarding who will run the Pavilion. A pending lawsuit will determine whether the city of St. Paul must extend Black Bear's current lease at the Pavilion through 2018.

According to Brad Meyer of

the St. Paul Parks and Recreation Department, "This lawsuit does not impact current or future bookings at the Pavilion, and despite the parties' disagreement, Black Bear and the city agree that any wedding or event that is scheduled at the Pavilion will go forward on the scheduled date and time."

He added, "Black Bear Crossings and the city of St. Paul are committed to ensuring the

smooth operation of the Como Lakeside Pavilion for couples, organizations, and other customers who have booked weddings or events in 2014 or beyond."

The St. Paul Parks and Recreation Department has accused the Black Bear owners of breach of contract, and argued that the restaurant should be earning higher revenues in order to be considered successful. The owners disagree.

**Service, Price...
Professional Advice**

from St. Paul's Largest Flooring Retailer

Quality Design
Over 60 Years
Hamernick's

1381 Rice Street, St. Paul, MN 55117
651-487-3211
www.hamernicksdecorating.com
Hours: Monday - Thursday 8am - 8pm
Friday 8am - 5:30pm • Saturday 8am - 4pm

Salt, Sand and Shovels
We have them in stock!

We have: Eco Friendly, Pet Safe, Safe for concrete,
Safe on gress, Calcium Chloride and salt for your roof

978 Dale Street North, Saint Paul -
(651) 489-3210

Kendall's
Ace Hardware & Paint
www.kendallshardware.com

840 Payne Ave., St. Paul -
(651) 776-6996

We can special order anything!
"The Friendliest Stores in Town" ...Free Popcorn

We do thermal insulated window repair.

Monitor
COUPON CUT-OUTS



FREE
Regular 6" Sub

with purchase of a 6" sub of equal or greater value & a 21 oz. soft drink
One coupon per customer per visit. Not valid with any other offer or on Premium or Double Stacked Subs.
Coupon expires 3/31/14

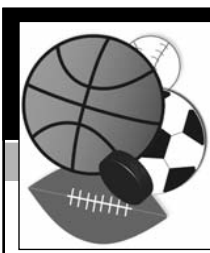
Good only at: 2121 University Ave. W, St. Paul (University & Transfer) 651-646-3096

Central High School has been in the hunt all season for a Saint Paul City Conference title in both boys and girls basketball. Rayeon Williams leads the Minutemen with 19.5 points per game through January.

Sam Gubbrud and Kalu Abosi have also averaged double figures for the Minutemen with 13 and 11.1 points per game respectively. The Minutemen posted a 12-5 overall record and 5-1 mark in the conference through January.

The Minutemaids (12-5) had a 5-0 start in conference play through January. Rayna Sherow and Chelcie Kizat have been their top two scorers with 13 and 12.4 points per game respectively. Sherow, a 6'2" center, averages a near double-double with 9.8 rebounds per game.

Central's wrestling team has claimed the regular season conference title with a 6-0 record. Zachary Ferguson has been a key



In The Zone

By MATTHEW DAVIS

Central's hoops teams in hunt for conference titles

part of the success with a 20-4 record at 106 pounds.

Como Park Senior High has struggled in conference wrestling duals this season. The Cougars went 1-5 with their lone win coming against Humboldt, 30-13.

Como Park boys basketball gets balanced scoring with four players averaging double figures. Darroel Pittman and Ampa Garubanda average 11.9 and 11.4 points per game respectively. Peter Schrader and Demetrice Mitchell both put up 10.9 per contest. The Cougars have held their own in the Saint Paul City Conference at 4-3 through Janu-

ary. Non-conference play has not been kind to them with a 4-8 record.

Makayla Rogers led the Saint Paul Blades girls hockey co-op with 28 points in the regular season. She has 21 goals and 7 assists, averaging a goal per game. Sophomore Brianna Menssen had the second-highest point total on the season with 16. Overall, the Blades struggled in the regular season with a 4-14 mark. Girls from Central, Como and the other Saint Paul public high schools play on the Blades.

Thor Will leads the Como Park boys hockey team in scoring

with 25 points through the start of February. Will has 15 goals and 10 assists to lead the Cougars offense. Max Inskeep also has 20-plus points on the season with 21.

Cougars goalie Carter McCoy has a save percentage of .873 in 19 starts through Feb. 1. He has started all Cougars games thus far and has an 8-11 overall record.

The Cougars will need to find a new home for hockey next season as the State Fairgrounds Coliseum will no longer host hockey games after this winter. Feb. 28 will mark the final date

of official games played there when boys hockey section finals commence.

Hamline University's women's hockey team will also be looking for a new rink since they have used the Coliseum since 1977 except for a stint at Drake Arena from 2005-2010. The Pipers play their final game at the Coliseum on Sat., Feb. 22 against Saint Mary's.

Andrayah Adams leads the Como Park girls basketball team with 19.7 points per game through January, and she has helped the Cougars achieve a strong start in Saint Paul City play. Abigail Peterson has been a solid offensive player for the Cougars with 11.1 points per game, and Alex Peterson regularly puts up double figures and averages 9.9 points per game. The Cougars (11-7, 5-1 through January) entered the month of February just a half game behind Central in the conference.

Someone more famous than me once said, "Volunteers are not paid – not because they are worthless, but because they are priceless." In the Como Park neighborhood, we're fortunate to have a lot of dedicated volunteers who work together to make the neighborhood a better place. Each year, the District 10 Como Community Council, together with district councils across St. Paul, recognizes outstanding volunteers who have made a sustained difference through the Neighborhood Honor Roll awards.

This year, two individuals and one organization were selected by the District 10 Community Council's board of directors to join the Neighborhood Honor Roll. I'd like to tell you a little about each of them.

Chris Harkness has volun-



Como Community Council Corner

JON KNOX, BOARD CHAIR OF THE DISTRICT 10 COMO COMMUNITY COUNCIL

Volunteers are priceless in Como Park

teered countless hours as Vice Chair of the District 10 Como Community Council, past chair of the Land Use Committee, and current chair of the District Land Use Plan Committee. In addition, Chris regularly participates in other community events – because she is just interested in making the Como Park neighborhood a wonderful place to live. She achieves this with a quiet grace and impressive organizational skills. Chris is a wonderful asset to District 10 and

the Como Park neighborhood.

Pete Bolstad is a dedicated member of the Como Park community – he has served as a youth soccer coach, Bike Rodeo volunteer, and member of the District 10 Como Community Council. His work in guiding the District through the challenges of expanding to include the South Como community helped insure that the process remained inclusive, thorough, and fair. Pete also serves as a member of the Como Regional

Park Advisory Committee.

The Hubert H Humphrey Job Corps Center has been part of the Como Park neighborhood for over 30 years. Unlike many large institutions that just happen to be located in a neighborhood, the Job Corps and its students have become an important part of our fabric. Each year, dozens of students donate hundreds of hours of volunteer time to projects in the neighborhood – from being a large part of the muscle that built

the new Chelsea Heights playground (in the snow!) to setting up and taking down tables and tents for Como Fest, from the Zoo Boo at Como Park to the annual neighborhood clean up. Without their volunteer commitment, many of these events would not be possible.

I'd also like to recognize the other nominees for this honor – Terry Ubel, Angie Sechler and AndreaLynn Johnson. Their commitment to the neighborhood, through block club leadership, helping neighbors in a pinch, and organizing National Night Out events helps make our neighborhood great. To each of them, and to each of the other volunteers in the Como Park neighborhood, you have the sincere thanks and appreciation of your neighbors – you truly are "priceless!"

Solar Incentive Program registration

The Minnesota Department of Commerce is now accepting applications for the Made in Minnesota Solar Incentive Program. This 10-year, \$15-million-a-year program will be taking applications until Feb. 28 (final selection for program is by lottery) for Minnesota residents and businesses to apply for the incentive to help defray the cost

to install a solar electric system. Qualified solar electric systems must be less than 40 kilowatts (kW) to qualify for incentives.

The solar incentive program will be available to customers of the following investor-owned utilities: Xcel Energy, Alliant Energy, Minnesota Power, and Otter Tail Power. Consumers and businesses that would like to participate in the Made in Minnesota Program will need to install solar electric systems (also known as solar photovoltaic

or PV) using solar modules or collectors certified as manufactured in Minnesota. Currently, modules certified for the program are available from two Minnesota companies—tenKsolar and Silicon Energy.

Questions about the program can be directed to solar.help@state.mn.us or the Commerce Energy Information Line: 651-539-1886 or toll-free at 1-800-657-3710.

SPPD Western Dist. noted for record

During Police Station Visitors Week (PSVW) 2013 the Saint Paul Police Department's Western District received an impressive 42 visitors during the event week. This number represents the largest number of visitors ever engaged by a single station in the history of Police Station Visitors Week in North America,

and illustrates the strong community ties that the Saint Paul Police Department enjoys with the community they serve.

During PSVW 2013, more than 12,100 people visited 1,339 police departments and stations in 22 countries around the world, in the 7th annual occurrence of this unique global event.

SUPPORT OUR ADVERTISERS!

"Family Restaurant in St. Paul Since 1952"

The COFFEE CUP

1446 RICE • 489-0020

Ranch Breakfast \$7.95 AND 4 OTHER BREAKFAST SPECIALS
i.e. #6 – 2 Eggs & Toast \$3.90

Daily Lunch Specials
Dinner Specials until 3:00pm

ALL TIME FAVORITES SERVED 7 DAYS A WEEK!

**LARGE BREADED COD
HOT TURKEY SANDWICHES
GRILLED PORK CHOPS
GYROS SANDWICH**

5:00am to 3:00pm Everyday
**BREAKFAST ALL DAY
TAKE OUT ORDERS**

NEW LOOK VISION

"Clearly the best!"

- Contemporary to Classic Styling -
- 40 years of experience -
- Over 700 frames to choose from -

February Special

\$250 towards a complete pair of glasses

New Look Vision
2484 University Avenue West,
St. Paul, MN 55114-1735
Phone: 763-390-6268
Fax: 763-390-5038
Email: newlookvision@outlook.com
Tuesday-Friday 10am. to 6:30pm
Saturday 10am to 3pm
Check us out online at www.newlookvision.com

Purple Onion Book Club

brought to you by **HAMLIN bookstore**

ORDINARY GRACE
A NOVEL
NEW YORK TIMES BESTSELLING AUTHOR
WILLIAM KENT KRUEGER

MEET THE AUTHOR!

The author, William Kent Krueger, is scheduled to attend!

Monday, March 3
@ 6:15 p.m.

Ginkgo's Coffehouse
721 Snelling

Hamline Bookstore * 651-523-2270 * www.hamlineuniversitybookstore.com

The Hamline Midway neighborhood has no shortage of exceptional residents. Neighbors regularly go above and beyond the typical calls of community to ensure this area not only remains a valued place to live and grow for people of all ages and backgrounds, but continues to improve towards becoming a benchmark for modern urban community living.

Every year residents from each of St. Paul's 17 Districts are nominated by their neighbors to be recognized for outstanding contributions to their communities. This year they were honored at a special Neighborhood Honor Roll event at the University of St. Thomas Binz Refectory where Saint Paul Mayor Chris Coleman and City Council President Kathy Lantry were on hand to honor their service.

This year's Honor Roll recipients from Hamline Midway include Dan Loritz, Erin Pavlica and Greg Anderson. All three continue to contribute to this neighborhood in meaningful and lasting ways. The Hamline Midway Coalition would like to thank them for everything they do on a daily basis to build community and improve the quality of life for all in our beloved corner of St. Paul.

News from District 11

By KYLE MIANULLI, HMC COMMUNICATIONS COORDINATOR

Neighbors recognized for community service at Neighborhood Honor Roll event

Dan Loritz

Dan served as Hamline University's representative on the Hamline Midway Coalition (HMC) Board of Directors from 1994 until he stepped down at the end of 2013. As the longest serving board member in the history of HMC, Dan provided sage advice to the organization and was a key link between HMC and Hamline University. Over the years, Dan facilitated significant contributions from Hamline University to a wide range of neighborhood improvement projects. HMC is pleased that Dan will continue to serve the neighborhood as a member of the HMC Development Committee.

Erin Pavlica

A spitfire who is passionate about her neighborhood, Erin has been involved in a wide range of com-



Greg Anderson, Erin Pavlica, and Dan Loritz (left to right) were recognized alongside other neighborhood volunteers from across the city for outstanding community service at this year's St. Paul Neighborhood Honor Roll event.

munity building, transportation, local food, and environmental activities. She was a key organizer of the Hamline Midway Heartwood Festival and was instrumen-

tal in ensuring it was a zero-waste event. As a member of the Friendly Streets Initiative Working Group, Erin was a strong advocate for the Charles Avenue Project.

She continues to be heavily involved in efforts around sustainable foods, environmental initiatives and so much more.

Greg Anderson

Greg sets the standard for local businesses being valuable community partners. As the owner of local business Greg's PC Repair, he helps keep our community "green" by offering free recycling of printers and computers. He enthusiastically supports a wide range of neighborhood events and has helped initiate efforts to revive and maintain Hamline Park. He is active in neighborhood online discussion forums where he regularly demonstrates his concern for his neighbors and willingness to share, lend a hand, and have fun.

The event began with time for all the evening's honorees to mingle and connect while enjoying live music from The Light of the Moon Duo. Following some kind words from the mayor, Councilperson Lantry recognized each volunteer individually. All the honorees' names will be memorialized on a plaque in city hall alongside past year's Neighborhood Honor Roll recipients.

Green Line

Continued from page 1

Central Corridor Funders Collaborative, Metro Transit and Metropolitan Council to plan day-long celebrations all along the line for opening weekend. Celebrations are planned June 14 at Union Depot Station, Central Station, Western Ave. Station, Victoria St. Station, Hamline Ave. Station, Raymond Ave. Station, Stadium Village Station and West Bank Station. Free light rail rides offered June 14-15 to celebrate the grand opening are likely to add to the anticipated crowds.

Haigh and Polly Talen, program director for the John S. and James L. Knight Foundation, and co chair of the Funders Collaborative, were the main speakers Jan. 22. The funders collaborative works with major foundations to support efforts along the light rail line. Talen said celebrations would be unique to each station area. The official ribbon-

cutting event will be at Union Depot.

Elected officials and business leaders also praised the project Jan. 22, with Hennepin County Commissioner and chair of the Counties Transit Improvement Board Peter McLaughlin saying the line would "re-twin" the Twin Cities. Haigh in turn

thanked Ramsey, Hennepin, St. Paul and Minneapolis officials for their efforts toward the project and in promoting economic development along the line.

The train will serve 18 stations in Minneapolis and St. Paul, and will connect both downtown as well as the University of Minnesota, Midway, State

Capitol and Union Depot. By 2030 Metropolitan Council projections are that more than 40,000 people will ride the train each weekday. The most recent figures for Routes 16 and 50 buses, which cover the line now, were 24,000 weekday riders in 2010. The Route 50 bus will be eliminated when light rail starts running. Route 16 will have changes at its east end.

The \$957 million line is 98 percent complete and is on budget. Its opening date is six months sooner than required by the Federal Transit Administration. Federal dollars paid for about half of the project, with state, local and regional funds making up the rest. The opening date is about one month before the July 15 Major League All-Star Game at Target Field in downtown Minneapolis.

In terms of construction, the largest projects remaining are completion of a stairway-elevator tower in downtown St. Paul and a power-traction station in Low-

ertown. Some public art at stations also has to be installed. Testing of the 46 train cars to be used for the Green Line is continuing, along with testing and checks of traffic signal, communications and catenary wires. Those along the line will see stepped-up train testing starting this month.

According to Metropolitan Council, the light rail project created 5,445 construction jobs and \$252 million in construction payroll. Workers came from more than 60 Minnesota counties. The project also created 177 permanent operations and maintenance jobs for downtown St. Paul.

One Met Council claim is that the line has already spurred more than \$1.7 billion in development along the line. But the line also created hardship for businesses along University Ave. and in downtown St. Paul. Some businesses closed while others cut hours or laid off employees.

Much outreach is being done to discuss bus route changes that will take place when the line opens and in the future. A few routes will be cut back, such as elimination of I-94 bus service on weekends and the end of Route 144. But other routes will be extended or added. In January, Summit Hill residents met to discuss the new Lexington Pkwy. bus line, which will run the length of Lexington. The line has received a generally favorable response from neighborhood residents and business owners.

Metro Transit hosted an A Line bus rapid transit open house in January at the Ramsey County Library in Roseville, drawing dozens of people to view plans for the region's first planned bus rapid transit line. Although it won't open until late 2015, transit officials see bus rapid transit as a key connection for north-south destinations along Snelling Ave., from Rosedale Mall to the Blue Line's 46th St. station in Minneapolis.

More information about the Green Line is available at www.metrotransit.org/greenline.



Celebrations are planned June 14 at Union Depot Station, Central Station, Western Ave. Station, Victoria St. Station, Hamline Avenue Station, Raymond Ave. Station, Stadium Village Station and West Bank Station. Free light rail rides offered June 14-15 to celebrate the grand opening are likely to add to the anticipated crowds.



EpiscopalHomes.org

Welcome Home!

Cornelia House
651-288-3931

Independent Living, 62+



Our residents could live anywhere, but they like the idea of living on a *continuing care campus* with priority access to all the services they may ever need. Gracious 1 and 2 BR apartments, great neighbors, and Light Rail at your door in 2014. Call for a tour. You just may want to call us home!

1840 University Avenue West • Saint Paul Midway

Iris Park Commons
651-646-1026

Assisted Living, 62+



We offer comfy, secure 1 or 2 BR and studio apartments with a menu of Assisted Living services, including Home Care, to preserve and enhance your independence. Some units are available through County programs. Call for a tour. Experience what "A Community of Heart" feels like!

1850 University Avenue West • Saint Paul Midway

St. Paul gears up for adding bike trails to the city

By JANE MCCLURE

Have you noticed that bike crossing sign on Snelling Ave. near Charles Ave.? It may be a sign of things to come. A recently released plan would add 214 miles of bike trails, lanes and marked streets to the 144 miles the city already has. It would create a 1.7 mile, \$18 million downtown loop of landscaped bike trails. It would also complete the Grand Round, a bicycle loop system envisioned in the 1880s.

One goal of the plan, which would roll out over the next 20 to 30 years, is to get more people onto their bikes, said Reuben Collins, the city's sustainable transportation planner. "This plan offers a lot of opportunities for all types of bicyclists, from the commuters to those who ride for recreation. We also want to appeal to people who may not identify themselves as bicyclists, who have that bike hanging in the garage."

Adding bike options would appeal to those worried about issues including distance and safety, he said.

Monitor area residents already have current or proposed bike facilities on Charles Ave., Minnehaha Ave., Pierce Butler Rt., Com Ave., Prior Ave., and a Pascal-Hamline connection. Part of Lexington Pkwy. has an off-street path and part of the Grand Round travels through Como Park and the West Midway.

Proposed are routes along Cleveland Ave., Fairview Ave., Fuller/Aurora, Aldine St., Hamline Ave., all of Lexington Pkwy., Chatsworth St. and a combination of Grotto/Victoria St. Other routes are eyed, including a section of Snelling between Hewitt Ave. and Midway Pkwy., as well as Idaho Ave., Midway Pkwy., Dale St., Arlington Ave., Western Ave. and Front Ave. Options vary from route to route and would include off-road trails, bike lanes and on-street bike markings and signs.

Everyone can weigh in on the plan this month, at upcoming open houses. The first is 6-8 pm Thurs., Feb. 13 in Weyerhaeuser Hall, Grand Ave. and Macalester St.; 6-8pm Tues., Feb. 18 at Duluth and Case Recreation Center, 1020 Duluth St. and 6-8pm Thurs., Feb. 20 at the Capitol River Council Office, US Bank Center Building, 101 E. 5th St., Suite 240.

The plan will also be reviewed by district councils, neighborhood business associations and various bicycle and pedestrian advocacy groups. It had its first review Jan. 27 by the St. Paul Planning Commission Transportation Committee, which had a generally favorable response. It will also be reviewed by groups including St. Paul Bicycle Coalition, Bike Walk Twin Cities and St. Paul Women on Bikes.

A public comment period on the plans wraps up Apr. 30, with a draft ready for the Planning Commission Transportation Committee in June. It then goes to the full commission and the City Council for approval, then on to Metropolitan Council. Metropolitan Council will not only look at the plan as part of the city's comprehensive plan, it will also consider St. Paul's ideas as part of a larger regional bike-ways plan.

The city's current comprehensive plan calls for St. Paul to develop and maintain a "complete and connected" bikeway system. Work on the bike plan started in 2011, was shelved due to a staff change and then jump-started last year. Ideas for the plan were drawn from neighborhood district plans, the city's own comprehensive and transportation plans and links to bike routes in adjacent cities, said Collins. Several ideas were taken from the 2010 Bike/Walk Central Corridor Plan, which outlined a number of potential routes to and parallel to the light rail line.

It's not known what the total plan would cost. Collins said the

plan should be thought of as a 20 to 30-year document. Some ideas could be implemented on streets that are already slated for construction as part of the city's residential street paving program or other projects. Sources for funding including the Long-Range Capital Improvement Budget and state and federal grants are also eyed for the plan.

The plan would ultimately put bikeways ½ mile apart. About 70 percent of the city's bike network would be off-street trails or on-street bike lanes. On some lower-traffic streets there

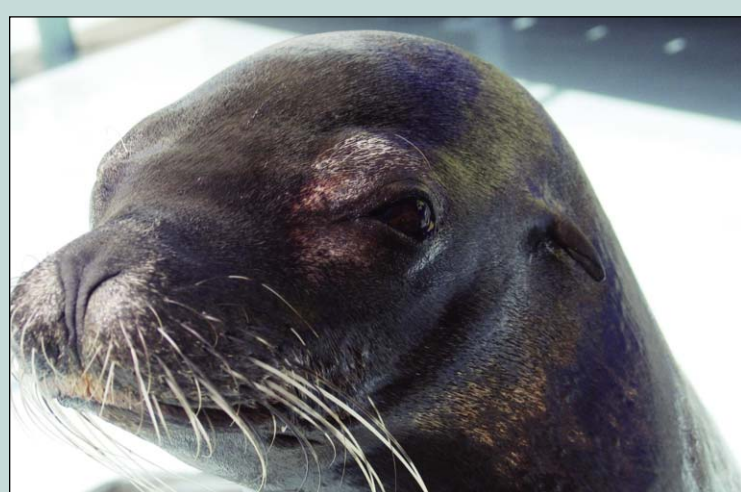
were would be bike boulevard improvements, so bikes could better share the street with motor vehicles. Improvements could include signage and street markings, corner bumpouts and small medians.

For the Grand Round, the completion work needed would mean changes to Pelham Blvd, Raymond Ave., Como Ave. and Wheelock and Johnson parkways. It would connect to Minneapolis' 51 miles of Grand Round bikeways.

For more on the plan, visit www.stpaul.gov/bikeplan.



A recently released plan would add 214 miles of bike trails, lanes and marked streets to the 144 miles the city already has. It would create a 1.7 mile, \$18 million downtown loop of landscaped bike trails.



Sparky and the rest of the seals and sea lions will be housed together when Seal Island is remodeled. Currently, the six pinnipeds (the classification for seals and sea lions) are in groups of two or three.

Seal Island

Continued from page 1

NOT ABOUT GETTING BIGGER BUT BETTER

The update to Seal Island follows upon the heels of the \$11 million Gorilla Forest that opened in June 2013, and the

\$15 million Polar Bear Odyssey that opened in June 2010.

"With the development of these last series of projects for Como, it's not about getting bigger but doing what we do better," said Furrer. "We want to ensure that, for generations to come, Sparky will be an ambassador for conservation and education. In order to do this updates are needed."

St. Paul Blackhawks Soccer Club

Our mission is to develop highly skilled, respectful, competitive soccer players who will be contributing members to any community. We embrace our diversity and welcome the different cultures that bring richness to our club and our players' experience.

2014 Summer Camps

5-7 Year Olds

Little Hawks Soccer Camp I - June 9-13

9:30am - 11am \$75
Orchard Rec Center

Little Hawks Soccer Camp II - July 14-18

9:30am - 11am \$75
Orchard Rec Center

8-11 Year Olds

Developmental Camp - June 9-13

9am - 12 noon (half-day) \$95
9am - 3pm (full-day) \$175
Orchard Rec Center

8-14 Year Olds

Summer Skills Challenge - July 14-18

9am - 12 noon (half-day) \$95
9am - 3pm (full-day) \$175
Orchard Rec Center

9-18 Year Olds

Striker / Keeper Camp - June 16-20

9am - noon \$150
McMurray Fields

9-14 Year Olds

Soccer World Cup Camp - June 23-27

9am - 12 noon (half-day) \$95
9am - 3pm (full-day) \$175
Orchard Rec Center

12-18 Year Olds

Competitive Player Camp - July 21-25

9am-11am \$150
McMurray Fields



Details and registration at
www.blackhawksoccer.org



A-1 VACUUM CLEANER COMPANY
www.A-1Vacuum.com
SALES, SERVICE & SUPPLIES
666 University Ave. (651) 222-6316
www.Facebook.com/ATVacuumMN

Metro Automotive
Midway's Complete Automotive Service Center
675 N. Snelling Ave.
(6 blocks north of University)
651-644-5208
(Open Mon. - Fri. 7 a.m. - 6 p.m.)
www.metroautomotive.net

Exceptional Senior Living

Just across from Como Park
Heated underground parking
Two elevators
Small pets welcome

COMO BY THE LAKE SENIOR APARTMENTS

901 East Como Blvd.
St. Paul, MN 55103
651-489-3392

Sunrise Market expands from Iron Range to St. Paul

By JAN WILLMS

At the Sunrise Market that opened about two months ago at 865 Pierce Butler Route in St. Paul, a portrait of Guilio Forti hangs on one wall. In 1910 he left his native Rome and moved to America, up on the Iron Range.

Planning to earn his living as a miner, the nearly fifty-year-old Guilio soon discovered that job would be too difficult for a man of his age. So he returned to what he knew best, baking, and in 1913 opened a bakery in Hibbing, beginning the family business of Sunrise Creative Gourmet Foods.

Each generation has continued and expanded the creation of Italian food, with the Sunrise Market the latest innovation. It is operated by Tom Forti, Jr., the great-grandson of Guilio, and his wife, Emily.

"Friends ask why we opened a retail here," Tom Jr. said. He said the building, which is shared with Oriental Foods, features a commercial industrial kitchen with ovens, coolers and walk-in freezers. There is a room designed for presentations, and the plan is for cooking classes, tastings and chef demonstrations to be held there.

"The kitchen was here first, and this is where the opportunity existed," Tom Jr. explained. He is a managing partner with Food Crafters, which will rent out the kitchen to small companies.

"We're hoping to evolve, and add premade sandwiches and cured meats to our store products," Tom Jr. said. Currently, the market offers the pastas and bakery products made in Hibbing. Sunrise also plans to make gluten-free pasta.

It has been a continual path of growth for the family-owned business that started as a bakery in 1913.

Guilio and his wife, Virginia, delivered Vienna and Italian bread by horse-drawn carriage to the mines. Their children assisted with making deliveries and translating recipes from Italian to English.

A son, Vince, expanded the business to include pastries, cakes and ethnic specialties for other Iron Range immigrants. Pasties, meat pies filled with vegetables, and potica, thinly rolled sweet bread with a walnut filling, were added to the product line.

Vince's children continued to work in the business. Son Tom and his wife, Mary, purchased a



Currently, Sunrise Market offers the pastas and bakery products made in Hibbing. It has been a continual path of growth for the family-owned business that started as a bakery in 1913. (Photos by Jan Willms)

theater for sale in Hibbing that belonged to singer Bob Dylan's uncles and in 1984 opened Sunrise Deli, which focused on hot foods and imported groceries. They continue to run that operation today, while a cousin and aunt operate the bakery, according to Tom Jr.

"One thing that I remember from growing up is that my parents would be home, and we would eat together as a family every night," he recalled. "My parents would sit around and talk business while we kids

would do the cooking and cleanup. I also would help with deliveries for the deli, and I learned how to make everything."

Having worked in the business growing up, Tom Jr. graduated from the University of St. Thomas with a degree in business. He went out to Sun Valley and worked in a brewery, returning to Minnesota in 2004.

"The business drew me back," he said. He worked with his family for a couple years, building accounts on the Iron Range for them to sell their products.

"I moved to Minneapolis in 2006 and worked for some specialty food distributors," Tom Jr. continued. He helped the family wholesale business expand in the last 5-6 years, with products today being sold in 250 grocery stores. Sunrise Creative Gourmet Foods are in stores in Iowa, the Dakotas, Illinois and Nebraska as well as Minnesota.

Tom Jr. said his experience working with food distributors, as well as his presence at Farmers Markets in the Twin Cities for the past several years, has been very helpful.

"Making contacts is a huge part of the business," he said.

Although this has been a rough winter to start up a business, Tom Jr. said he has been very pleased with the reception Sunrise Market has had from the

local community, as well as loyal Iron Rangers who stop in.

The store is open 9am-5:30pm Monday through Friday and 10am-3pm on Saturdays.

Besides the pasta, Sunrise Market sells Stromboli, and Philly Rolls. Also for the first time, products only found at the Sunrise Bakery are available in the Twin Cities. Coffee cakes, pastries, specialty breads and Potica are available daily.

Tom Jr. and his wife, who now live in St. Paul with their two children ages 5 and 1, are currently the only employees at Sunrise Market. He said that once they start making gluten-free pasta, they plan to add more staff.

With a glance at his great-grandfather's portrait, Tom Jr. said, "I look up at his picture and wonder what he would think."

When he started his small bakery in 1913, Guilio may have never thought his family would continue to expand and build on the family business for generations to come.

But it is not that surprising to Tom Jr.

"I was raised in a small family that had good values," he said. "My parents worked very hard, and they still do."

With that work ethic in place, Sunrise Creative Gourmet Foods will likely continue to flourish and grow with each successive generation.



We treat your entire family.
We offer a full array of services.
We care for all aspects of your health.



New Patients Welcome!
SAME DAY APPOINTMENTS AVAILABLE

Como/Roseville Clinic
1050 West Larpentour Avenue
St. Paul, MN 55113

Hours:
Monday - Friday: 7:00AM - 5:00 PM
Evening Appointments Available
Appointments: 651-487-2831

Community-based clinics owned & operated by physicians
specializing in family practice, obstetrics, newborn & geriatric care.

Formerly "Family Health Services Minnesota, P.A."

EntiraFamilyClinics.com

Gloria Garcia, MD
Jane Kilian, MD
Kenneth Koch, MD
John Nichols, MD
Julia Perpich, MD
Grete Thomsen PA-C
William Wiencke, MD



Tom Forti Jr. stands beside the portrait of his great grandfather, Guilio Forti, founder of Sunrise Creative Gourmet Foods. Tom and his wife, who now live in St. Paul with their two children, are currently the only employees at Sunrise Market. Once they start making gluten-free pasta, they plan to add more staff.

Development percolates on University Ave. as Green Line opening announced

By JANE MCCLURE

Two more of University Avenue's former auto dealership sites are being redeveloped, industrial sites are changing hands and other projects are moving ahead. Those changes highlight this month's development update.

Goodwill/Easter Seals

Goodwill/Easter Seals' plans to build a two-story retail and office building on the former Whitaker Buick property won approval from the St. Paul Planning Commission Feb. 7. The existing building, at 1221 University Ave., will be torn down and replaced with a structure with a retail store, donation center and other uses on the first floor and office uses on the second floor.

The project still needs a conditional use permit for a drive-through donations drop-off at the back of the new building. The drive-through, which would be fully enclosed, is supposed to be at least 60 feet from residences. In this case the drive-through would be 15 feet from a residential property on Sherburne Ave.

Also, a variance was approved to allow a parking lot along University Ave. with more than 60 feet of street frontage. The frontage would be 199 feet. A second variance is sought for new building placement along the alley. A 13-foot minimum setback is required and a 7.5



Goodwill/Easter Seals' plans to build a two-story retail and office building on the former Whitaker Buick property won approval from the St. Paul Planning Commission Feb. 7.

foot setback is proposed.

Goodwill/Easter Seals representatives have met twice with neighbors to the north. The Hamline-Midway Coalition has objected to the project, stating it is auto-oriented and not consistent with plans for University Ave.

Project for Pride in Living

The \$25.6 million Hamline Station Project for Pride in Living (PPL) development at Hamline and University moves toward a spring construction start, and accommodates a neighbor to the north. The St. Paul Planning Commission Feb. 7 recommended approval of a zoning change. PPL purchased Midway Chevro-

let property and plans two mixed-use buildings. The four story buildings will have 108 units of housing and 13,000 square feet of first-floor commercial space.

One small strip of property, at 1334 Sherburne Ave., needs rezoning to single-family residential from traditional neighborhoods use, so it can be sold to a residential neighbor.

Victoria Theater

Hamline-Midway based Dangerous Productions is a partner in transformation of the Victoria Theater at 825 University Ave. into a community arts and cultural center. The Twin Cities Commu-

nity Land Bank bought the property, for \$275,000, on behalf of the Victoria Theater Arts Initiative. In 2009 the building was threatened with demolition to provide off-street parking for a nearby development. Area residents, musicians and artists rallied to save it.

"It's an incredibly exciting time," said Tyler Olson of Dangerous Productions. Over the next 18 months, fundraising as well as planning for the theater will be underway.

Industrial land sales

Orton Development Company has recently purchased two West Midway industrial buildings, the former Silgan Container firm at 747 Prior Ave. and the Wycliff Center at 2327 Wycliff St. Purchase prices are \$1.4 million and \$550,000 respectively. The California-based company hasn't announced plans for the two properties but has redeveloped more than 15 million square feet of space over the past 30 years.

Bus garage site

Redevelopment options are being eyed for the former Midway Metro Transit bus garage site at Snelling and St. Anthony avenues. The city of St. Paul is working with property owner Metropolitan Council. Union Park District Council's Land Use Committee will also be involved. Watch for neighborhood meet-

ings in the months ahead.

That property and Midway Center-owned land to the east have been the topic of numerous planning efforts in the past, including a Best Buy and a home improvement store. But none of the plans have come to fruition. The old bus barn site has been used for light rail construction storage.

CVS

CVS has pulled building permits for its store at 499 N. Snelling Ave. The \$450,000 project includes renovations to provide a University Ave. entrance and to make accessibility upgrades. Having a store door on University Ave. was debated when the building went through the city approval process several years ago, but the door was never added as promised.

Other notes

— Occupants have moved into Habitat for Humanity's new building at Prior and University avenues.

—The Turf Club, 1601 University Ave., has obtained permits for kitchen and restroom renovation.

—The Western U mixed-use development at the former Old Home Dairy site at Western and University avenues received a \$177,600 grant from Metropolitan Council for soil remediation and soil vapor mitigation.

Energy assistance still available to low-income and disabled

The Minnesota Department of Commerce, Division of Energy Resources wants low-income Minnesotans—especially seniors, people with disabilities, and families with children—to know that grant funds from the Energy Assistance Program (EAP) are still available to help pay their heating bills and help them stay safe and warm this winter.

"This brutally cold weather streak is an opportunity to remind Minnesotans who are struggling to pay their heating bills that help is still available," said Commerce Commissioner Mike Rothman. "Heating one's home is a necessity in Minnesota, and we don't want households to compromise their safety."

The average energy assistance grant is \$500 per household. Households with an income less than 50 percent of the state median income (\$43,642 for a family of four) may qualify; those who qualify are served on a first-come, first-served basis while funds last. People have until May 31, when the program year ends, to apply for EAP.

How to apply for energy assistance

EAP pays the utility company directly on behalf of eligible households. Qualifying families must apply for assistance at the local service provider in their area; Minnesota has 32 local service providers. A list of local service providers and information on

applying for the Minnesota Energy Assistance Program is available by visiting the Energy Assistance Section of the Division of Energy Resources website (www.mn.gov/commerce/energy/) or by calling 1-800-657-3710 or 651-539-1882. EAP is administered by the Minnesota Department of Commerce.

Next deadline: March 3

DS Disability Specialist, Inc.
Representing
Social Security Disability Claimants
A Leader in the Field
With More Than 15,000 Successful Claims

Our expert representatives will:

- Explain the process
- Discuss the merits of your claim
- File the needed paperwork and appeals
- Gather evidence
- Contact physicians
- Appear with you in court
- Provide any other necessary services

All to assure professional representation.
No recovery...No fee.

Call for free case consultation
1.800.642.6393
disabil@cpinternet.com www.disabilityspecialist.net

Love - Italian Style!



**It's Our 41st Anniversary
for Heart Shaped Pizzas
on Valentine's Day,
Friday, February 14th.**

For the Best Italian Food...

489-2005

961 Rice St. St. Paul

My Heart Belongs To
MAMA'S


NOW OPEN SUNDAYS

**Monday-Thursday 11am to 9pm
Friday 11am to 10pm • Saturday 4pm to 10pm
Sundays 4pm to 9pm**

St. Paul school at center of new charter school rules

Authorizer Concordia University being required to more closely monitor Community School of Excellence

By **TESHA M. CHRISTENSEN**

Who is responsible when a charter school is having problems? Should the state hold the school and/or the authorizer at fault?

The Community School of Excellence (CSE) in St. Paul and its authorizer Concordia University are at the heart of that statewide debate.

A 2011 charter law calls for a more active oversight role for authorizers, which will likely become more of an issue next year as the state prepares to begin evaluating authorizers under it. Already, the number of authorizers has dropped from about 45 to 27. Previously, agencies merely sponsored charter schools and were not tasked with oversight.

"As an authorizer, Concordia has an obligation to provide ongoing oversight of the schools it authorizes to ensure they comply with all applicable laws and rules and with their charter contracts. This includes taking concrete steps to engage with CSE to address concerns that arise, including identifying the specific concern, developing a plan for resolving that concern, and establishing a timeline for completion," wrote Minnesota Department of Education (MDE) Temporary Charter School Compliance Liaison Kathryn

Olson to Concordia in a letter dated Jan. 7.

Olson does not believe that Concordia gave the state enough detail about the school's plan or Concordia's oversight and activities following a December letter. "However, the response still does not describe the specific plans and steps Concordia is taking to fully resolve with CSE the issues Concordia has identified as concerns, nor does it indicate how Concordia plans to prevent such issues from occurring in the future," she wrote.

In its Jan. 31 response, Concordia countered that they are working closely with the school board to address MDE's three areas of concern in their role as the agency tasked with oversight of the CSE board. "We believe wholeheartedly that running the school is the board's responsibility. We, as the authorizer, provide oversight to that board. We work with that board," stated Concordia Vice President For Academic Affairs Lonn Maly.

To further that role, a liaison from Concordia attends each of the CSE school board meetings, which is standard procedure for all eight of the charter schools Concordia authorizes.

ALLEGATIONS INVOLVE FEDERAL FUNDS AND ABUSE OF POWER

Much of the controversy at CSE swirls around its founder and director, Mo Chang, a longtime educator who served as a charter school liaison for the St. Paul Public Schools. She is accused of threatening staff for disagreeing with her, and contributing to a high level of turnover among the staff.

The Department of Education is also concerned that school personnel are discouraged from reporting maltreatment and that the investigations are being interfered with by the director.

Last year, the MDE directed Concordia to investigate allegations that the school has misused federal funds, and mishandled board elections.

The complaint about how CSE uses free- and reduced-price lunch funds, including having students punch in for meals they do not consume, is not a new one. Previously, CSE had been required to repay over \$200,000 of misused food and nutrition (FNS) funds for similar issues.

CSE opened in 2007 with 176 students, and since has seen its population grow to nearly

1,000 students, according to its website. The K-8 Hmong Language & Culture and IB World School is housed in the former home of St. Bernard's Catholic school at 170 Rose Ave. W.

CSE'S RESPONSE

In November 2013, the law firm of Ratwik, Roszak and Maloney, P.A. reported to the CSE school board regarding its independent investigation into the complaints made to the Minnesota Department of Education. According to the school board minutes, the investigation centered around seven allegations. The investigator concluded that the evidence did not support four of the allegations, that one allegation was partially substantiated by the evidence, and two allegations were substantiated by the evidence.

The CSE Board of Directors met in closed door sessions on three separate occasions to consider the findings of the investigator and to implement an employee improvement plan for the superintendent for the 2013 - 2014 school year, to bring about changes to improve the organization as it relates to the process of mandatory reporting of child abuse or neglect, the conduct of the food service pro-

gram, and the supervision of CSE employees.

CSE's counsel is currently working on the redaction of the investigative report in accordance with the Minnesota Government Data Practices Act.

At the December 2013 school board meeting following a second round of letters between the MDE and Concordia, Superintendent Chang stated that she takes these issues very seriously and has put together a targeted plan to address the items on the improvement plan with a tracking matrix. The plan includes training for both food service and mandatory reporting for both parents and staff.

In a letter to the MDE, Concordia agreed with the independent investigation findings that the director creates a work environment where employees feel threatened, fearful of retaliation, or not supported in relation to student or parent issues.

Additionally, according to a letter written by Maly, Concordia does not believe the board's improvement plan for the CSE director goes far enough to address the problems, and is closely monitoring the issue, particularly in light of a number of teachers who have resigned their positions this year.

Como Golf Course

Continued from page 2

guaranteed amount of \$65,000 (regardless of performance). The city's total annual payment will increase from the minimum annual guarantee if gross revenues totaled more than \$875,000 at Phalen, and/or \$750,000 at Como, in a season.

Prom will be required to provide the city with monthly fi-

nancial performance statements and an annual financial report.

While Prom will set the rates at the golf courses, the city will have final approval.

Prom may use the current city-owned turf maintenance equipment and furniture, fixtures and equipment at each course, but will be responsible for repairing and maintaining it.

The city will contribute \$30,000 per course each year for capital improvements. Meanwhile, Prom will spend \$10,000 per course for the first three years, and \$20,000 per course

for the remaining two years.

The city will continue to operate the ski program at Como and the cross-country grooming at Phalen during the winter.

About 20 full-time unionized public employees who work at the Phalen and Como courses will be affected by this agreement. Most will be reassigned to work at the Highland courses filling positions previously being held by temporary/seasonal/out of title workers. The staff that are impacted have been officially notified of any changes to their existing positions, and only a

few will not have a position, pointed out Brad Meyer of the Parks and Recreation Department. Some opted to retire. The city will eliminate all operating liability, and after all expenses are factored in, the net benefit of the agreement will be in the range of \$400k annually.

The city's golf deficit grew to more than \$7 million in 2013. According to parks and recreation staff, getting this draft agreement in place and eliminating the operating liability at Como and Phalen were essential to maintaining the city's AAA credit rating.

"So this agreement with Prom that eliminates losses and allows the courses to stay open with enhanced food and beverage options is the best case scenario in this situation," said Meyer.

PLANS FOR CHANGE

The Givens believe they can do a better job than the city at running the golf courses, in part because they will be able to promote more events (such as weddings, golf tournaments, etc.), and drive revenues in a way that a city can't.

Prom plans to get liquor licenses in order to give patrons more choices and keep the golfers after their rounds.

"We also plan to offer some new pricing options to try to fill open tee times," said Bill.

The Givens expect challenges. "Both courses will always be challenged with weather - it's obviously one thing we cannot control," said Bill.

Additionally, the clubhouse configuration and space at Como is not ideal for promoting any catering or even expanding food and beverage service. However, the Givens intend to add outside seating and furniture that is rain resistant, and improve options on the beverage carts to counteract these negatives.

Because Como does not have a driving range, the Givens know that expanding golf to the public and trying to gain new golfers will be difficult.

"As you know, the golf population has been shrinking over the past 10 years. We are going to try to make the experience easier, less stressful, and more enjoyable," said Given.

Come to a pharmacy that cares.

Independently Owned and Operated

Fast, Friendly Service

Professional Prescription Compounding

Delivery in the Midway Area

New Customers Always Welcome

Lloyd's
pharmacy

Est. 1949

720 Snelling Avenue North
St. Paul, MN 55104
(651) 645-8636

www.lloydsrx.com

Business Hours:

Monday 8:30am - 7:00pm
Tuesday 8:30 am - 7:00pm
Wednesday 8:30 am - 7:00pm
Thursday 8:30am - 7:00pm
Friday 8:30am - 7:00pm
Saturday 8:30am - 6:00pm
Sunday 9:00am - 1:00pm

OFFICE & CREATIVE SPACE ON THE GREEN LINE



8 buildings with a variety of spaces near the Raymond Station

UPDATE COMPANY

Building a creative community.

Helping small business & nonprofits grow for over 30 years.

651-641-0208

www.updatecompany.com

In Our Community

Monitor

Send us your news! When you submit your press release it will be considered for both the newspaper as well as the Monitor Facebook page (facebook.com/monitorsaintpaul). You can also go to our website, MonitorSaintPaul.com and enter the information in the online Event Calendar.

NW Como Rec Center gears for summer

Northwest Como Recreation Center, 1550 Hamline Ave. N., reports that registration for Summer Sport starts Mar. 1 (through Mar. 31) for pre-t-ball (ages 3-4), t-ball (ages 5-6), nearball (ages 7-8), machine pitch baseball (ages 7-8), baseball (ages 9-18), and softball (ages 9-14).

Classes and activities that begin in March or April include:

- Yoga for ages 6-11
- Lego Fungineering for grades 1-4
- Ballet/Creative Movement for ages 3-5
- Artist Workshop for ages 7-13
- Big and Messy Art for ages 18mo-4yrs
- Tae Kwon Do for ages 6-7 up
- Floor Hockey ages 7-12
- Youth Jam grades 5-8

To register for programs go to www.stpaul.gov/parks. For questions or to register by phone call 651-298-5813.

Yiddish music focus of Hamline U concert

Klezmorim - fronted by violinist Judith Eisner - will be performing the mysteries of Rediscovered Yiddish Music as part of Hamline University and the Minnesota Global Art Institute's "Roots Music: Four Corners of Europe" concert series. The event is being held at Sundin Music Hall on the Hamline University Campus, 1531 Hewitt Ave., on Sat., Feb. 22 at 7:30pm. There will be a pre-show talk at 7pm.

Eisner is a faculty member at the MacPhail Center for Music and has made the violin and klezmer her life's work. As she explains, "Rediscovered Yiddish Music will offer audiences a rare opportunity to hear traditional klezmer music as it functioned in the rituals of the wedding. Modern klezmer music, which started after WWI with clarinet based swing bands is how most people know klezmer music. What you'll hear at this event is something quite different!"

Tickets are \$12 for adults, \$8 for students, and \$5 for Hamline/ACTC community members. Advanced tickets can be purchased by calling 651-523-2459.

In conjunction with this concert, there will be a free klezmer dance party on Sun., Feb. 23 from 2-4 p.m. at Hamline University's Bush Center Ballroom (2F of the center, adjacent to Sundin Hall). The dance will be lead by Shira Schwartz.

Hamline Library posts monthly events

The Hamline Midway Library, 1558 W. Minnehaha Ave., has a

variety of activities planned for all ages in February and March, from hands-on crafts for adults and kids, to exciting cultural events. Among the events are:

—Every Friday through Mar. 7, come to the Hamline Midway Library from 10:30-11am for Toddler and Pre-School Storytime.

—Mon., Feb. 17, all St. Paul Library locations will be closed for Presidents Day.

—Wed., Feb. 19, the library's Wednesdays@1:00 series continues with the last presentation of Swedish Weaving with Ruthanne, from 1-2:15pm. Learn the art and skill of Swedish weaving in this hands-on workshop. Craft supplies are provided for a \$10 contribution. Please bring your own small scissors. Registration required; please call 651-642-0293 to sign up.

—Wed., Feb. 19, 7-8:15pm, the Fireside Reading Series features Heid E. Erdrich, whose book "Original Local: Indigenous Foods, Stories, and Recipes from the Upper Midwest" explores indigenous menus and stories. Presented by the Friends of the St. Paul Public Library with co-sponsor Micawber's Books.

—Mon., Feb. 24, 6:30-7pm, families can enjoy Evening Reads and Activities with literacy volunteer Lark.

—Wed., Feb. 26 and Wed., Mar. 12, from 1-3pm, Harriet Mednick presents Leaf, Bean, Pod, Bottle as part of the Wednesdays@1:00 series. The talk focuses on the cultural histories of tea, coffee, chocolate, and scotch.

—Wed., Feb. 26, 7-8:15pm, teacher, writer, and minister Karen Hering closes the Fireside Readings Series with a discussion of her book "Writing to Wake the Soul: Opening the Sacred Conversation Within." Presented by the Friends of the St. Paul Public Library with co-sponsor Micawber's Books.

—Sat., Mar. 1, 1-3pm, the Saints and Sinners Mystery Book Club meets. Join the club for discussions of good mysteries. Contact Geraldine Balter at 651-224-5570 for information about the latest titles to be discussed.

—Wed., Mar. 5, 1-3pm, the Wednesdays@1:00 series features Dr. Stephanie Digby's intimate look at plants and fungi in her talk Botany for Non-Botanists. The presentation will include gardening tips.

—Sat., Mar. 8, 1:30-3pm, the Saturday Club has its monthly meet-up, featuring science projects for kids.

Parkinson's support group meets monthly

A Parkinson's Support Group meets every third Friday at 1pm at the Black Bear Crossings in the Como Pavilion building, 1360 N. Lexington Pkwy. On Feb. 21 neurologist Dr. Eleanor Orehek will join us for a discussion of deep

brain stimulation as a treatment as a treatment for Parkinson's Disease. For further information contact Nancy at 612-306-9817.

Jehovah resumes Wednesday suppers

Jehovah Lutheran Church is serving church suppers Wednesdays at 5:30pm through Apr. 9. Suppers are free, although a donation of \$3 for adults and \$2 for children is welcome. The church is at 1566 Thomas Ave. Information is available by calling the church at 651-644-1421.

Music Under Glass finishes up season

"Music Under Glass" is a free concert series performed through Mar. 2 at the Como Park Conservatory, 1225 Esabrook Dr. Join your neighbors on Sundays in the tropical gardens and beat the "winter-blahs" from 4:30-6:30pm. Beer and wine will be available to purchase. This year's final programs include:

- Feb. 16, "Cafe Accordion Orchestra," swing ballads, tangos, chachas, and rumbas;
- Feb. 23, "The Ericksons," heart-breaking and heart-warming harmonics; and
- Mar. 2, "Jack Klatt," songs that resonate with blues, rags and jazz.

Central Lutheran to hold "shadow" event

Central Lutheran School, 775 N. Lexington Pkwy., is offering an opportunity on Mon., Mar. 3, for prospective students to "shadow" or visit a classroom for a two-hour block in either the morning from 9-11am or the afternoon from 12:45-2:45pm. Slots are limited and must be reserved prior to that date, by calling the school office at 612-645-8649. It will be necessary for parents to sign their child in and fill out an information form, and parents may request a meeting with the principal about school programs. Register soon, as slots are limited.

Regular testing on Green Line starts

Staying off Green Line light rail tracks on University Ave. becomes critical in late February when daily tests will begin of the new light rail vehicles. Trains will run as often as 10 minutes apart, the same frequency as regular daily service. "This means anytime is train time from now on. Expect to see a train at any time on any track from either direction," said Mike Conlon, director of rail and bus safety for Metro Transit. "Safety is our shared responsibility."

ty." Remember these four basic safety rules:

- always stay off the tracks;
- stay off station platforms until service begins in June;
- look both ways for oncoming trains; and
- cross only at intersections and legal mid-block crosswalks

Camp Fair to be held at Como Mar. 8

Minnesota Parent magazine presents its 8th annual Camp Fair on Sat., Mar. 8 from 10am-2pm. This free event will take place at the Como Park Zoo and Conservatory, 1225 Estabrook Dr.

With so many summer camp programs out there, this event makes it easy for parents to sift through the many options available. The Camp Fair gives families a chance to meet representatives from day, overnight, music, science, computer, art, and performance programs—and more! Parents and children can browse exhibitor booths to learn about each unique camp or program experience and find the perfect fit to satisfy both child and parent. Now is the best time to get a start on planning for your child's summer camp adventures.

This year's entertainment includes face painting and a creation station where kids can make one of a kind art projects as well as goodie bags, and door prizes provided by exhibitors.

MN350 to meet at Hamline Library

Are you concerned about Climate Change? Trying to connect the dots on climate, personal to global? Want to do something, but don't know where to start? Come learn what the group MN350 is doing, and how you can get involved, at an open meeting Feb. 24, 6:30-7:30pm at Hamline Public Library, 1558 W. Minnehaha. MN350 provides citizens with opportunities to become active in the Twin Cities, Minnesota and across the globe. The meeting will be held in the Community Room, ground level. For more information call Linda Littrell 651-645-2718.

Town Hall Meeting planned February 22

State Senator Sandra Pappas is holding a town hall meeting with local state Rep. Rena Moran on Feb. 22, 1-2:30pm at Hamline Library, 1558 W. Minnehaha Ave. Town halls are informal public meetings that give members of the community an opportunity to meet with their legislators to discuss the 2014 legislative session, emerging issues and to voice concerns.

Local School Board mem-

bers, City Council members and County Commissioners will also be in attendance and can provide information on local issues and answer questions area residents may have regarding local government. Congresswoman Betty McCollum has also been invited to round out this impressive group of state, local and national leaders.

NAMI offers local support groups

The National Alliance on Mental Illness (NAMI) of Minnesota sponsors two free support groups in the area:

—an Open Door Anxiety and Panic support group meets in St. Paul from 6:30-8pm, on the 2nd and 4th Thursday of the month, at Goodwill-Easter Seals, 553 Fairview Ave. N., in Room 123. For information call NAMI at 651-645-2948, or go to www.namihelps.org; and

—the Partners and Spouses support group meets on the 2nd Tuesday of each month at 6:45pm, at Falcon Heights United Church of Christ, 1795 Holton St. This support group is specifically for partners or spouses of someone who lives with a mental illness. For more information, call Lois at 651-788-1920, or Donna at 651-645-2948 ext. 101.

Central Lutheran sets musical for March 7

This year's lower wing musical at Central Lutheran School is scheduled for Fri., Mar. 7, at 7pm. The younger children will be performing two brief plays, "Wonderbread" and "Changed Well." Both were written by Pastor Tom Gundermann, campus pastor at Concordia University and father of three Central Lutheran students. The public is invited to this event! The school is located at 775 N. Lexington Pkwy.

Martial arts focus of annual celebration

Twin Cities T'ai-Chi Ch'uan invites the public to attend it's annual Chinese New Year celebration and Martial Arts Demonstration on Sat., Feb. 22, beginning at 5pm. Lion Dance, accompanied by traditional instruments, begin the evening. Students and teachers will then demonstrate T'ai-chi Ch'uan and related internal arts. Twin Cities T'ai-chi Ch'uan Studio is located at 2242 University Ave., Suite 207. You should enter the building through the door on Hampden Ave. Parking is available on Myrtle and Hampden avenues.

CONTINUED ON PAGE 10

In Our Community

Continued from page 9

Nurse program needs board members

The Como Park/Falcon Heights Living at Home/Block Nurse Program, providing supportive neighborhood services for seniors, is looking for volunteers to serve on its board of directors. Expertise is needed in the areas of computer technology, legal skills, finance skills, marketing, and development/fund-raising. The board meets 6 times per year, with some additional work outside of regular meetings. If interested, please contact Jody McCardle, Executive Director, at 651-642-1127.

Sunday Speaker Series returns

Back by popular demand, District 10's Sunday Speaker Series for 2014 will take place on the fourth Sunday in February, March, and April. These informative, entertaining presentations feature experts from within the neighborhood and community. Admission is free (donations are welcome). Presented by the District 10 Environment Committee:

—Sun., Feb. 23, 1pm: "The Bird Man of Lauderdale," Clay Christensen, will share anecdotes and information from his new books about birds in the Como Park area. The program will be held at Lyngblomsten, 1415 Almond Ave.

—Sun, Mar. 23, 1pm: "Re-envisioning our Energy Future: Energy Efficiency and Solar in the Como Community," a panel discussion of new and exciting opportunities to build a sustainable, solar energy future in our neighborhood. The program will be held at the Historic Streetcar Station, 1224 Lexington Parkway N.

—Sunday, Apr. 27: "Sustainable Lawn Care and Landscaping," a panel discussion of the best ways to incorporate sustainable practices into lawn care, landscaping, and gardening. The location TBA.

Events scheduled at Merriam Center

Keystone Community Services at Merriam Park Community Center, 2000 St. Anthony Ave., hosts a series of programs in the coming month. Among them:

—AARP Tax Assistance will be available on Mondays and Wednesdays, by appointment, through Mon., Apr. 14. Call 651-645-7424 to schedule your half hour appointment. This is a free service.

—Arthritis Foundation Exercise Classes are offered on Tuesdays

and Thursdays from noon-1pm for a cost of \$1 per class.

—"Health Care Directives... Honoring Choices Minnesota" will be Wed., Feb. 26 from 11am-noon. Robert Newby and Dr. Richard Guyton, certified facilitators and instructors for the health care directive "Honoring Choices Minnesota" will discuss the importance of having a health care directive and who we would want to speak on our behalf if unable to do so. Copies of the directive will be available and will be discussed during the presentation. Please call 651-645-7424 to register for this program.

—Chess is played on Tuesdays from 11am-12:30pm. Chess lessons will follow at 12:30pm.

—Free blood pressure check and "Ask a Nurse" will be on the second Monday of each month from 11am-12:15pm.

—Keystone Senior Book Club meets on the first Tuesday of each month at 12:30pm.

—Meals on Wheels (hot, frozen or unheated) are available Monday through Friday from Keystone Community Services. Please call Keystone Community Services Senior Program at 651-645-7424 with questions or to register for classes, tax assistance or Meals on Wheels, located at Merriam Park Community Center (one block off of Cleveland Ave) St. Paul.

History program slated at Turf Club

The Minnesota Historical Society will present "History of Hip: Beer" at The Turf Club, 1601 University Ave., on Tue., Mar. 4 from 7:30-9pm. From old German brewery families like Yoerg, Schmidt and Schell's to

some of today's new microbreweries, brewing in Minnesota has always been a family affair. For this program, we'll fill our Steins, sip some suds, and discuss the stories and lore that shape family brews with historian Doug Hoverson. Samples from some of Minnesota's favorite family breweries will be available. Snacks and drink samples included at each program. The Lounge at the historic Turf Club is only accessible by stairs. Please call 651-259-3015 for alternate accommodations. This is a 21 plus event. Reservations are recommended by calling 651-259-3015 or register online at <http://www.minnesotahistorycenter.org>.

Two local groups receive legacy funding

Two local organizations were recipients of this year's Minnesota Historical and Cultural Heritage Grants.

Among this year's recipients were Hamline University, who received a \$48,863 grant for the Jeffers Archaeological Project. The project will survey the portion of the 23-mile long Red Rock Ridge not within the boundaries of the Jeffers Petroglyphs State Historic Site for additional glyphs and other evidence of usage to further aid in understanding human habitation in Southwest Minnesota.

Also receiving a grant was the Twin City Model Railroad Museum, who received a \$10,000 grant for "Marketing a Heritage." The money will allow the museum to hire qualified exhibit consultants to create new interpretive and instructional signage for a museum exhibit. The museum is located at 1021 Bandana Blvd. E., Suite #222.

Minnesota Historical and Cultural Heritage Grants are made possible by the Legacy Amendment's Arts and Cultural Heritage Fund, which supports efforts to preserve Minnesota land, water and legacy, including state history and cultural heritage.

Lions Club hosts local fundraiser

The St. Paul North Ramsey 500 Lions Club is hosting 'Spring Fever Reliever' on Sat., Mar. 15, from 10am-4pm. This free event will be held at the Guidant John Rose Oval, 2661 Civic Center Dr., Roseville, and will feature local crafters and area vendors, offering a wide selection of products and services. Join in for free refreshments, a raffle, silent auction and a variety of entertainment. Proceeds will support the Lions Club's charitable work in area communities.

Avalon School hosts controversial author

Avalon School (700 Glendale St.) high school students are partnering again with the Saint Paul Public Library (SPPL) for its annual Read Brave campaign. After all of controversy and press surrounding Rainbow Rowell's book "Eleanor and Park" and her rescinded offer to visit in Anoka, the SPPL decided to make the book its 2014 Read Brave book to share with students all over the city.

"Eleanor and Park," a love story between teens in the 1980s, heroically explores poverty, racism, and domestic abuse, all while movingly sharing the story of two young people trying to understand themselves and the world around them. Rowell, who visited Avalon in the fall, is returning for an event on Thur., Feb. 27, at 2pm. The event is open to the public, and Rowell will be reading from her book and answering questions.

St. Mark's School plans Gala Feb. 22

Calling all card sharks! Come play your hand at the St. Mark's School "Casino Night" school fundraiser on Sat., Feb. 22, from 6pm-midnight. This is a fun filled evening for grown-ups, including games, silent and live auction, cash bar, buffet dinner, and dancing. The event begins at 6pm with the doors locked at 9pm. Tickets are \$30, sold at the door. St. Mark's Catholic School is located at 1983 Dayton Ave. Visit <http://www.markerspride.com/> for more information.

Co-ed Drum Circle meets February 28

Co-ed Drum Circle will gather on Fri., Feb. 28, 6:30pm at the Women's Drum Center, 2242 University Ave. W. Percussion, rhythm and freedom of expression will be explored. All levels of experience are welcomed and encouraged. Cost is \$10 at the door, and drums will be provided. Info and registration at www.womensdrumcenter.org.

CONTINUED ON PAGE 12



DISABLED? CAN'T WORK?

Call Mary F. Hastings
651-645-0894

You meet personally with your attorney at each step of your claim.

Local Attorney in Midway 20+ years' experience
Skilled Representation

PIONEER PRESS

ADULT DELIVERY ROUTES ARE AVAILABLE IN YOUR NEIGHBORHOOD!

We are looking for reliable people to deliver newspapers in the Ramsey, Washington, Dakota, Anoka, or St. Croix County areas.

Must be 18 or older with a dependable vehicle and have a valid driver's license and current auto insurance.

**Be your own boss and work independently.
Great Exercise!**

Work early mornings - 2 to 4 hours delivering
the Pioneer Press.

**ASK ABOUT OUR
\$150 SIGNING BONUS!**

**Call the Pioneer Press at 651-228-5199 and
leave a message with your name, address,
and phone number.**

Call Today!

your Lutheran church on the

Sundays:
8:45 a.m. Morning Praise
9:30 a.m. Adult Bible Class
9:45 a.m. Kids Kingdom
10:45 a.m. Celebration Worship

Pastor Bob Benke

a community of joy

Jehovah LUTHERAN at Thomas and Snelling

www.jehovahlutheran.org • 651-644-1421

Options for you & your family

supporting your lifestyle as changes happen

- Independent Housing & Assisted Living
- Long-term Nursing Care
- Alzheimer's Care
- Caregivers Support
- Rehabilitation & Transitional Care
- Home- & Community-Based Services



*Do you need a restful place to
heal between hospital and home?*

Consider the Transitional Care Unit (TCU)
at Lyngblomsten. For more information,
visit www.lyngblomsten.org/TCU.

LYNGBLOMSTEN
(651) 646-2941

Encircling
lives
with
choices
since
1906

Local nonprofit honored by White House invitation

College Possible, whose local office is at 540 Fairview Ave. N., has announced an ambitious growth plan, including expanding services to Philadelphia, at a recent White House gathering. The summit, jointly-led by the First Lady's office and officials from the National Economic Council, the Domestic Policy Council and the Department of Education, addressed stark class disparities among college students and graduates. College Possible, an organization working across the country to coach low-income students to-and-through college, has served local students since 2001.

"Educating Minnesota's capable low-income students is not only the right thing to do; it is the on-

ly way to maintain a strong local workforce in a competitive global economy. The community has embraced our mission, directly contributing to the strong results that have led us to the doors of the White House," explained College Possible Twin Cities Executive Director, Sara Dziuk.

In the Twin Cities, College Possible is poised to grow. The program has expanded to partner with 20 high schools, and an additional 20 high schools are on a waiting list eager to welcome College Possible.

President Obama described the summit as part of an effort to "make sure that this is a country where if you work hard you can make it."

College Possible received attention in November when Harvard University released historic results from a study using randomized controls, considered to be the gold standard of evaluation. The findings show that College Possible's approach to unlocking the potential of low-income students is effective and that students served are significantly more likely to enroll in a four year college.

College Possible's approach is designed to connect students to the college that best matches their abilities at a fraction of the cost of other college success programs. College Possible has served 10,000 students this year in the Twin Cities community.

Local Masonic Temple hosts illusionist and medium

The Triune Masonic Temple in St. Paul, one of the oldest operational Masonic Lodges in Minnesota is known for its Secret Societies and Ghosts. On Feb. 28 and Mar. 1, the Masonic Temple (1898 Iglehart Ave.) will set the stage for 2 nights of Mystery and Intrigue with An Illusionist and a Medium - featuring special guests from the other side.

Twin city native, Sean-Paul as a Victorian Era entertainer, will perform his Illusion and mentalism in a manner that dates back to the same time as when the Masonic temple was built. "It is a thrill to perform material from 100 years ago can still bring today's most skeptical viewers to the edge of their

seats!" says Sean-Paul of Intrigue Theater.

In the second half of the experience, Juliana Fay as the Medium, makes a call out to the other side and ultimately proves that Ghosts have Answers. While the evening is a theatrical experience guests typically leave questioning if what they just saw was just entertainment, or possibly something more.

This event is two nights only on Fri., Feb. 28 and Sat., Mar. 1 at 8pm. Tickets start at \$24.95, and the last two years that Intrigue came to Triune Temple, the show was a sell out. Go to [www.intriguetheater.com](http://intriguetheater.com) for online reservations or call 855-446-8744.

Classifieds

Monitor

Want ads must be in the Monitor before March 3 for the March 13 issue. Call 651-645-7045 for more information. Your classified ad will also be automatically placed on the Monitors website at www.MonitorSaintPaul.com

Monitor Want Ads are now \$1 per word with a \$10 minimum. Send your remittance along with your ad to Monitor Classifieds, Iris Park Place, 1885 University Avenue, Ste. #110, St. Paul, MN 55104. Classifieds must be prepaid via cash, check, or credit card. Classified ads can be e-mailed to denis@deruytemelson.com. Want ads must be in the Monitor before Mar. 3 for the Mar. 13 issue. Call 651-645-7045 for more information. Your classified ad will also be automatically placed on the Monitor's website at www.MonitorSaintPaul.com

ADDITIONS

Martin Dynneson & Son. Kustom Building and Remodeling - Kustom additions. Roofing, siding, exterior/interior painting. Metal roofs, guaranteed for 100 years. Marty 612-724-8819. 2-14

AIR CONDITIONERS

Recycling discarded air conditioners. Free pick-up. No charge! Roger 612-210-3529. 8-14

ANTIQUES

For Sale: Vintage 1900-1949 lights, house hardware, doors, tubs, radiators, etc. Also furniture hardware. 651-644-9270. 20% off with ad. B-14

ATTORNEY

Creative Solutions With a Personal Touch. Legal Services in the areas of: Small Business, Wills and Trusts, Probate, Real Estate, and Family. Kirsten Libby, 855 Rice Street, Suite 100, St. Paul, MN, 651-487-1208 www.libbylawoffice.com. B-14

BATHROOMS

Bathroom/kitchen!! Basement finishing. Bad water pressure? Sinks, Toilets and tub/surrounds. etc. Ceramic tile. Basement bathrooms installed Call 612-275-9815. 2-14

HOUSE CLEANING

Amanda's Cleaning, once or ongoing, long term references 651-206-3339. 2-14

PAINTING

Painter Jim. 25 years experience. Small jobs wanted. 651-698-0840. 3-14

All Seasons painting/repair. Color patching/consulting. Insured. Free estimates. Kevin. 651-699-2832. B-14

SNOW REMOVAL

Snow removal - sidewalks, driveways, rooftops. Gutter cleaning. Free estimates. Insured. 651-699-2832. B-13

VOLUNTEER OPPORTUNITIES

Reimbursed Senior Volunteer Opportunities--Serve as a Senior Companion helping elderly adults in the community or serve as a Foster Grandparent tutoring and mentoring children. Volunteers receive an hourly tax free stipend, mileage reimbursement, and training. Must be 55+ and serve a minimum of 15 hours/week. Contact Cory at 651-310-9450. 2-14

WANTED TO BUY

Paying the most for your furniture, dishes, glassware, knickknacks, costume jewelry, antiques, pictures, lamps, household items, etc., I make housecalls. Call Mary. 612-729-3110. 4-14

****WANTED**** - Old Stereo, HiFi Equipment, HAM, and Cameras. Andy 651-329-0515. 2-14

WINDOWS/SCREENS

Custom making/repairs. Thermal windows; fix frames, glazing. Kendall's—651-489-3210, 651-776-6996. B-14

SERVICES • SERVICES • SERVICES • SERVICES • SERVICES • SERVICES • SERVICES

Classifieds:
\$1 per word

ROOFING
Nilles Builders, Inc.
Full Warranty
Licensed • Bonded • Insured #4690
"We Work All Winter"
651-222-8701
www.nillesbuilders.com

ESCOBAR
HARDWOOD FLOORS LLC
Installation • Repair • Sanding • Refinishing • Patching
14 Years Experience
Free Estimates • Insured
952-292-2349 • 651-230-7232

Merriam Park Painting
• Exterior & Interior
Painting - Enameling
• Ceiling Texturing
• Wallpapering
• Free Estimates
Call Ed 651-224-3660

Nilles Builders, Inc.
Additions • Remodeling
Renovation • Windows & Siding
Concrete • Garages
Licensed • Bonded • Insured #4690
651-222-8701
www.nillesbuilders.com

A Quarter Century of Helping Homeowners

SNOW & ICE REMOVAL
RESIDENTIAL & COMMERCIAL

FREE Preventative Roof Inspections & Storm Damage Assessments

AUSTAD
CONSTRUCTION
Residential & Commercial
651-224-0566
www.austadconstruction.com
Free Estimates, Many References
Licensed, Bonded & Insured
MN Lic. # 20320318

MasterLine
ROOFING CONTRACTOR

JamesHardie

BBB
ACCREDITED BUSINESS

NormanDale
Electric Co.

Residential, Commercial & Industrial
651-644-0655
"Now Celebrating 30 Years" Free Est.
Lic# CA01340

Emerald ash borers still plague the city despite deep freeze

By JANE MCCLURE

Despite recent cold weather, emerald ash borers aren't going away any time soon. About 250 trees are to come down in the Como Park, Hamline-Midway and Frogtown neighborhoods. Lexington Pkwy. between Horton and University avenues will look very different, as 211 ash trees will come down there alone. More trees will be felled on St. Albans St. and Idaho Ave. in Como neighborhood.

Emerald ash borer (EAB) is a non-native insect of major concern that was discovered in the St. Anthony Park neighborhood of Saint Paul in May 2009. Since then it has been found in Desnoyer Park, the Selby-Dale-Summit area, Como Park, Hamline-Midway and Frogtown neighborhoods. There is an infestation at Fort Snelling as well. But one challenge in trying to eradicate the pests is that emerald ash borers can be present for a few years before they are detected.

Trees have to be cut down this winter, before the insects are on the move again. St. Paul Parks and Recreation's Forestry Division uses a structured removal program to take down infested trees, stressed and structurally unsound trees. St. Paul's structured removal program targets areas where ash are in decline, and not in areas where the insects are already present. Ash trees become very brittle when stressed or diseased, causing branches to fall.

Leaving some ash trees standing in areas where emerald ash borers have been detected is a way to slow the spread to other areas, said Rachel Coyle. She leads the city's emerald ash borer



"Although we anticipate the cold could have some impact on the larvae populations, the infestation is so widely spread already that although the cold will kill some, it will not kill all, so EAB will still have major impacts on our ash tree population."

- Brad Meyer, City of St. Paul Parks and Recreation

control efforts. "It gives them something to munch on."

During the recent cold snap, state officials noted that one benefit was that very cold temperatures could kill emerald ash borer larvae, which live beneath tree bark. While the cold may play a role in slowing the spread of disease, city and state officials caution that it doesn't mean emerald ash borers will be eradicated. "Although we anticipate the cold could have some impact on the larvae populations, the infestation is so widely spread already that although the cold will kill some, it will not kill all, so EAB will still have major impacts on our ash tree population," said Parks and Recreation Public Services Manager Brad Meyer. St. Paul's plan to stay ahead of the spread by removing and replanting as many public boulevard ash

trees as funding allows, needs to continue.

"The potential positive of the cold, is that it may help to also slow the spread, which our Forestry staff will certainly be ap-

preciative of," Meyer added.

Structured removal is just one way city officials have used to control the spread of emerald ash borer. One concern is that as the insects spread, the city could

lose large numbers of trees at once, as it did when Dutch elm disease spread in the 1970s and 1980s.

Control measures have included putting purple traps throughout the city to track the pests, as well as structured removal of trees. A limited use of chemical treatment of trees is being tried in the Selby-Dale-Summit area. But costs and questions about the long-term effectiveness of chemicals are issues.

Area residents affected by structured removal should have received postcards from the city. After trees are removed residents will receive door hangers saying what type of trees will be planted as replacement. The city is planting different species of replacement trees, to promote diversity and avoid the widespread loss of trees happening now. The intent is to plant replacement trees in the spring. Residents can ask the city for water bags to help the young trees.

For more information about emerald ash borer and city programs, go to www.stpaul.gov/eab.

In Our Community

Continued from page 10

HQB Center plans noteworthy events

The Hallie Q. Brown (HQB) Community Center, 270 N. Kent St., will be sponsoring several noteworthy events in the next month:

—On Feb. 20, 4-6pm, HQB will sponsor "Fare for All Express," an opportunity to purchase meat and produce 40% off of retail pricing. This event is open to the community and all are welcome to come.

—On Mar. 1, noon-2pm, join the "March Campaign Kick-off Event." Be a Hero in the fight against hunger and join in for an afternoon of fun making capes, masks and learning how you can be a Hero in the fight against hunger.

—The Annual March Campaign Rummage Sale starts Mar. 6, 3-6pm with a presale event. All proceeds benefit their Food Shelf. The sale then continues Mar. 7, 9am-6pm and Mar. 8, 9am-1pm, and closes down with the Bag Sale on Mar. 10, 9am-1pm when you can buy all that you can fit into a bag for \$5.

HU Theatre opens Linden play Mar. 7

Hamline University Theatre will continue its 83rd season with "Crocodile Seeking Refuge," by Sonja Linden, directed by Carolyn Levy. Performances will be held at 7:30pm, March 7, 8, 13, 14, and 15. Inspired by real life testimonies, "Crocodile" tells the story of five individuals who fled from their homes in Darfur, the Republic of the Congo, Iraq, Iran, and Vietnam.

Tickets for the performance range from \$2-\$8. For reservations or more information please contact the Hamline University Theatre Box Office at 651-523-2905.

Program on Wilders at Merriam Park

"Laura Ingalls Wilder and Frontier Values" will be held at Merriam Park Community Center, 2000 St. Anthony Ave., on Fri., Mar. 21 from 11am-noon. Kathy Oakley, author of a research article about Wilder, will provide an overview of the eight novels written by Wilder for children and teens and enjoyed by adults. There will be coffee and gingerbread, made from one of Laura's own recipes, before the program. Register for this event by calling 651-645-7424. The program is sponsored by the Keystone Senior Program.

MCP
MINNESOTA
CENTER FOR
PSYCHOLOGY

"Just when the caterpillar thought the world was over, it became a butterfly."
-unknown



Comprehensive Mental Health Services for Children, Adolescents and Adults

U.S. Bank Building, 2nd Floor ■ 2383 University Ave. W. ■ Suite 200

St. Paul, MN 55114 ■ Phone: 651.644.4100

Serving St. Paul, Minneapolis and surrounding communities

www.minnesotacenterforpsychology.com

Upcoming musical events at Hamline University

Sundin Music Hall
1531 Hewitt Avenue
Saint Paul

MONDAY, FEBRUARY 3
Lunch with Piano Virtuoso
Denis Evstyuhin

A performance of Peter Tchaikovsky's "The Seasons."

Time: noon-12:30 p.m.

Cost: Free and open to all

Info: sundinmusichall@hamline.edu
or 651-523-2459

SATURDAY, FEBRUARY 15
Minnesota Guitar Society presents
Colin Davin

A dynamic young guitarist performs.

Time: 8-10 p.m.

Cost: \$22 non-members,
\$17 members, seniors, students

Info: www.mnguitar.org or 612-677-1151

SATURDAY, FEBRUARY 22
Roots Music: The Four Corners of Europe #2—Judith Eisner

An evening of klezmer.

Time: Pre-concert talk at 7 p.m.,
concert from 7:30-10 p.m.

Cost: \$12 adults, \$8 students,
\$5 ACTC students, Hamline students
and employees

Info: sundinmusichall@hamline.edu
or 651-523-2459

