



Your Neighborhood Newspaper For Over Twenty Years

## What's INSIDE

News.....2



Keewaydin location determined

News.....3



Will Longfellow trust the bridge?

News.....6



New project focuses on safety

Feature.....8



Spring prevention list important

# Sabo Bridge closed to pedestrians, bicyclists

## Street crossing keeps bicyclists, pedestrians moving along Greenway

By TESHAM. CHRISTENSEN

When the \$5.1 million Sabo Bridge was closed on Feb. 19, 2012, it affected people traveling three ways. Light rail trains were prohibited from crossing under the bridge until February 24, and passengers were shuttled through that area via bus. Vehicles were rerouted from Hiawatha Ave. onto Cedar for a week. And bicyclists and pedestrians were no longer able to take the bridge and keep out of traffic; instead, they all had to cross at the street level.

Until Minnesota's only cable suspension bridge is reopened, those bicyclists and pedestrians will continue to dodge vehicles at the 28th St. and Hiawatha Ave. stoplights.

At this point, no one knows when the Sabo Bridge will be reopening. It is, however, stabilized now, pointed out Minneapolis Public Works deputy director Heidi Hamilton.

"Before we design a fix, we want to know what went wrong," said Hamilton.

Until that happens, the cost of repairing the bridge is also unknown.

The city is not releasing any opinions on what may have caused the cracks because no one knows what went wrong and won't until all the facts come in, said Hamilton. "There's not a lot of value in speculating," she added.

The bridge had most recently been examined in October. City inspectors gave the cable anchors the highest rating for soundness.

### WHAT HAPPENED TO THE BRIDGE?

At 10:06 p.m. Feb. 19, a citizen reported finding a pair of cables lying on the Sabo Bridge deck. City workers responded, and discovered that a partly rusted diaphragm plate had fallen 100 feet from the mast, and released the topmost cable, number nine. A bridge inspector arrived at 2 a.m. to examine the mast, and discovered a second crack in diaphragm plate eight. Crews detoured vehicle traffic away from the site. The



At 10:06 p.m. Feb. 19, a citizen reported finding a pair of cables lying on the Sabo Bridge deck. City workers responded, and discovered that a partly rusted diaphragm plate had fallen 100 feet from the mast, and released the topmost cable, number nine.

problematic effort to shore up the eastern end of the bridge began. These supports will remain in place until the bridge is fixed. One lane of northbound Hiawatha is closed to accommodate these supports.

The main focus the first week was making sure the bridge was stabilized and opening Hiawatha Ave. back up to traffic. Now the focus has shifted to discovering what went wrong.

Minneapolis and Hennepin County have awarded Wiss, Janney, Elstner Associates Inc. of Illinois a \$100,000 no-bid contract to investigate the cause of anchor plate fractures; the two entities will split the bill. A determination could take four to eight weeks. Wiss, Janney, Elstner Associates also received a \$2 million, no-bid contract to investigate the cause of the Interstate 35W bridge collapse in 2007.

Representatives of Wiss, Janney and Elstner were on the scene by Wednesday, Feb. 22; they



shipped the fallen plate to Lehigh University in Pennsylvania for forensic analysis.

According to Hamilton, the next day, workers removed tension from diaphragm plate eight, which was also cracked. The number eight cable was detached by engineers on Friday.

Wiss, Janney and Elstner began magnetic particle testing to examine the rest of the bridge's 18 steel anchors for cracks. A minor defect was discovered and fixed on plate seven, and cracking found on plate five. A temporary redundancy fix was completed the second week of March.

At the same time, the broken edge of plate number nine was removed. "There is a lot of interest in looking at that," Hamilton pointed out. This piece was also shipped to Lehigh University for analysis, and will be used to determine why the plate failed.

Some residents have speculated that too much weight on the bridge the day before may

have contributed to the plates breaking. Gabriel Hoffman, the Seward representative on the Midtown Greenway Coalition Board, noted, "The situation people seem to be concerned about was the Friday night before the cables snapped, when there was (apparently) a police car, an ambulance, and a fire truck up on the bridge. Now, it is designed to carry that load, so my understanding is that if there wasn't some underlying problem with the cable supports, it shouldn't have been a problem. If there is a problem with the supports, that load may have been the proverbial straw for the camel, but not being an engineer, I would not care to offer an opinion on the matter."

"The bridge was designed to carry service vehicles," Hamilton pointed out. The bridge needs to be plowed, and emergency vehicles are able to respond to calls on the bridge.

The city did a good job with the bridge closure, according to Eric Hart, a Cooper resident who doesn't own a car, but instead bikes wherever he needs to go. "I heard about it fairly quickly and the city was very transparent about what went wrong and what they needed to do to make it safe for the LRT to run and the car traffic to be able to go under it."

### IS THE CROSSING AT 28TH AVE. SAFE?

Until the bridge is back in service, bicyclists and pedestrians will continue to cross at the street level.

As the weather warms up and more pleasure bikers join the commuters, Midtown Greenway Coalition Executive Director and Longfellow resident Soren Jensen anticipates that there will be crowding at the 28th St. lights. Already during these warm spring days there have been long lines of bicyclists waiting to cross. "It could be even more dangerous as bikers at the end struggle to get across," said Jensen.

Continued on page 3

1885 University Ave.  
St. Paul, MN 55104  
651-645-7045

**Publishers:**

Calvin deRuyter, Tim Nelson

**Managing Editor:**

Denis Woulfe

**Advertising:**

Denis Woulfe - 651-917-4183  
Colette Mullenmaster - 651-494-8047

**Photographer:**

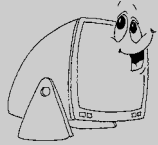
Stefanie Berres

**Production/Illustrations:**

Bob Wasiluk

**Contributing Writers:**

Eric Nathanson, Deborah Brotz,  
Jane McClure, Tesha M. Christensen,  
Sherri Moore, Tom Gilseman,  
Jan Willms



**Now, communicate with the Longfellow/Nokomis Messenger electronically!**

Now it's easier than ever to keep in touch with the Messenger. Letters to the editor and news releases for publication can be sent via e-mail at [denisw@aplacoremember.com](mailto:denisw@aplacoremember.com). Be sure to send copy in the body of the e-mail, and please mark whether the copy is a letter, a news release for publication, or perhaps just your thoughts on the last issue. Don't forget to write!

The Longfellow/Nokomis Messenger is a monthly community publication in the Longfellow and Nokomis areas of Minneapolis, owned and operated by deRuyter-Nelson Publications, Inc. All correspondence should be sent to the Messenger, 1885 University Ave., #110, St. Paul, MN 55104. Editorial and advertising offices can be reached at 651-645-7045. Our fax number is 651-645-4780.

All rights reserved. The contents of the Messenger cannot be reproduced without express written permission of the publisher. Copyright ©2012.

# Keewaydin playground location set

*New equipment and pool will go to the southeast of existing park building*

By **TESHA M. CHRISTENSEN**

Although the parks department doesn't yet know when the playground will be replaced at Keewaydin Park, it does know where it will be located.

After a community meeting in March, the decision was made to position the playground and pool to the east of the park building, on land that once housed tennis courts.

The playground equipment will be displaced by the expansion of Keewaydin School. The groundbreaking on a \$16 million addition that will double the size of Keewaydin School will be held in June; work is expected to be underway by the third week of June and continue for one year. At that time, part of the existing playground will be off limits.

"The K-12 play structure and wading pool will be open for use throughout and after construction," noted Minneapolis Park and Recreation Board Project Manager Deborah Bartels. "The pre-K structure, the swings, and the Galaxy spinners will be removed to facilitate construction."

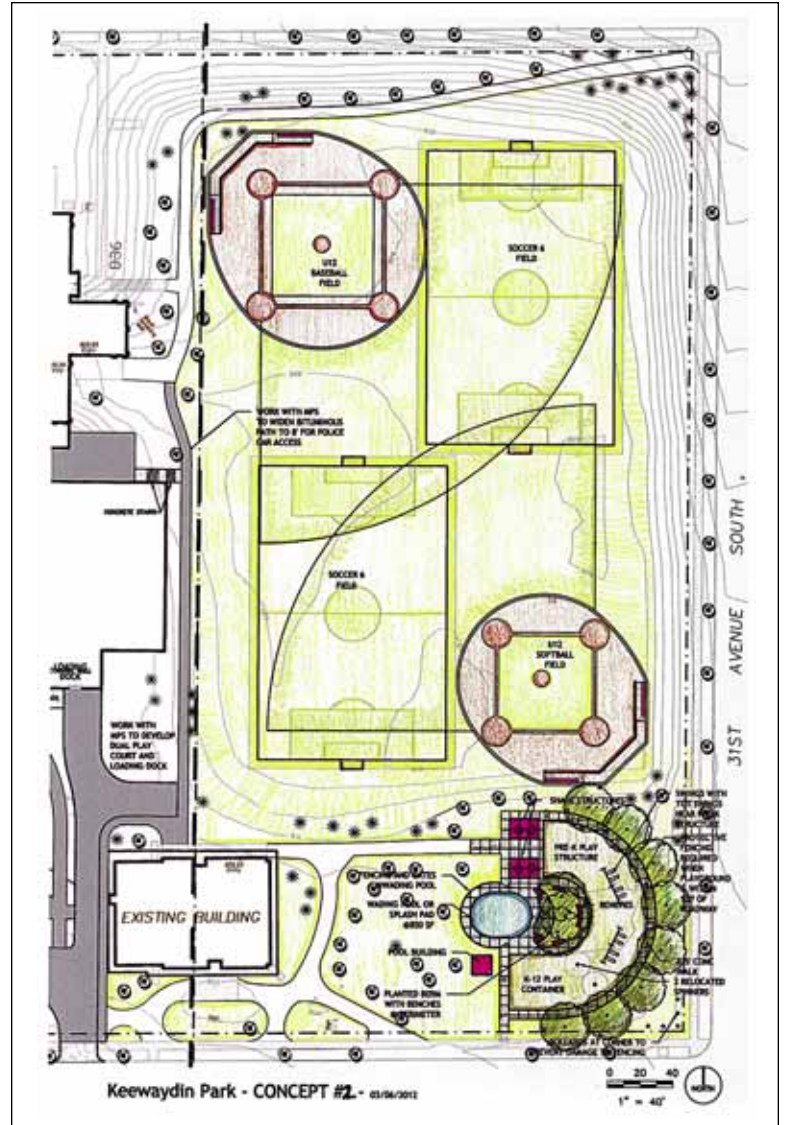
Since a design of the school expansion was first released to the public in January, the school district has continued to modify the footprint. "There has been a concentrated effort to compact the building so there would be

more play space to the southern end," said Doug Walters of the Nokomis East Neighborhood Association who serves on the school construction steering committee.

This not only lowers the construction cost of the school building, but also may allow the pool to remain where it is until the parks department is able to set aside funds for its replacement, he said.

**Continued on page 13**

*This is the concept favored by community members who attended a planning session in March. Pros of this design: 1) Playground buffered from athletic fields by trees and topography. 2) No fields lost - 2 ballfields and 2 soccer fields. 3) Policing: area is very visible from the street. 4) Soils are good; construction less expensive. Cons of this design: 1) Distance of playground from school. 2) Distance between Pre-K structure and K-12 structure will make parental observation more difficult. 3) Wading pool distance from building; supervision more difficult. 4) No tennis courts. 5) Close to street: fencing needed at perimeter of playground to meet current playground safety standards. The parks department is working on modifying this concept and will present it back to the community at a future meeting.*



**Great Meals at Great Prices Everyday!**  
Open Everyday for Breakfast at 6:30 a.m. • Lunch • Dinner

**BRIDGEMAN'S ICE CREAM**  
Our Grill is Hot for You!  
**TRY OUR JOE'S TUNA MELT**  
Serving the Best Ice Cream Treats For Over 100 Years!

4757 Hiawatha Ave. • Minneapolis • 612-721-6433  
(on the Parkway between Minnehaha Ave. & Hiawatha Ave.)

**Check Out Our New Nightly Specials**

**Messenger Coupon Cut-Outs**

**Queen's grill Café**  
\$1.00 OFF any menu item  
Queens Grill  
2700 E. Lake Street  
Expires 4/25/12

612.724.4885 • 612.729.0353  
2700 East Lake St. Minneapolis, MN 55408  
Steaks • Sandwiches • Gyros

## Longfellow Riverfront Cleanups April 21

Join an Earth Day tradition Saturday, April 21, 9:30 a.m.-noon — the annual River Gorge Stewards cleanups! Volunteers meet at East 36th and East 44th and West River Parkway; pick whichever starting point works better for you. Both feature educational materials, including information about upcoming River Gorge habitat restoration events, supply gloves and bags, and will have coffee from Peace Coffee and pizza from Parkway Pizza!

Part of a citywide event sponsored by the Minneapolis Park & Recreation Board, the cleanups are being organized by Friends of the Mississippi River and sponsored by the Longfellow Community Council.

Maps and additional details are available on the calendar at [www.fmr.org](http://www.fmr.org), or contact sue rich at Friends of the Mississippi River, [srich@fmr.org](mailto:srich@fmr.org) or 651-222-2193 x14.

**Join NENA's Board**

*Get Involved  
Stay Informed  
Be a Leader*

If this is who you are, or want to be, you may be the just the right person for the NENA Board of Directors.

Eight Board Members will be elected at the Annual Neighborhood Meeting on Tuesday, May 15: two from each of our four neighborhoods (Minnehaha, Morris Park, Keewaydin and Wenonah). If you are interested in being informed, involved and inspired, think about running for one of these positions.

Please call the NENA office for more information on the expectations and rewards of being a NENA Board member!

3000 East 50th St., Mpls, MN 55417  
612-724-5652  
[nena@nokomiseast.org](mailto:nena@nokomiseast.org)  
[www.nokomiseast.org](http://www.nokomiseast.org)



Design | Printing | Color Copies | Bindery

**Visual Expressions**  
Graphic Design & Printing, Inc.

**Grad/Open House Announcements**  
Bring in this coupon for **15% Off**

Coupon must accompany order. Offer expires July 31st, 2012. Color Copies 30¢ w/ Coupon. Black & White 10¢

612.729.1649 phone  
[www.printatve.com](http://www.printatve.com) - Email: [visualexpression@qwestoffice.net](mailto:visualexpression@qwestoffice.net)  
4009 Minnehaha Avenue South | Mpls.

**Olson Paint & Body Shop**  
Collision Service Since 1939  
JOE BALLUFF  
Owner

3701 Minnehaha Avenue  
Minneapolis, MN 55406

Phone (612) 724-1908  
Fax# (612) 721-4785

**10% OFF WITH AD**  
(Coupon good thru May 31, 2012)

# Sabo Bridge

Continued from page 1

"As we get into the summer, and the cyclists on the Midtown Greenway includes more recreational cyclists (as opposed to people doing serious training or commuters), it will be more of an inconvenience, since they tend to feel less comfortable crossing at Hiawatha," observed Hoffman, who travels on the Greenway every day.

There are several issues with the crossing at 28th and Hiawatha, according to local bikers.

"Drivers tend to be more aggressive on highways and not respect pedestrian right-of-way at crosswalks. They'll inch forward into the crosswalk," observed Longfellow resident Mike Jones, who bikes between three to 30 miles each day.

Hart noted, "The lane merging onto Hiawatha on the east side (coming from Lake Street) is probably the most dangerous part of intersection since it is

unclear if the cars will stop and they are coming fast most of the time," Hart said. "The right turn lane off of 28th to southbound Hiawatha is also problematic since cars don't always look for pedestrians or bicycles before they turn right."

Five years ago before the Sabo Bridge was constructed everyone used the street, but since then bicycle use has greatly increased in the Minneapolis, Jensen noted. Over 4,000 people use the Greenway each day. Minneapolis is currently second highest in the nation in the number of people commuting to work via bicycle, at 4% of the population; Portland has 6%. And as gas prices increase, Jensen believes more people will ditch their cars for bikes.

Most riders view the Sabo bridge as a safer and faster way to get across Hiawatha, according to Jensen.

"The more we can get people out of traffic, the more they want to bike," Jensen observed. "People won't bike unless it is safe."

He added, "The bridge is part of a network that makes people feel safe. It's a good investment." Jensen pointed out

that creating bike lanes, fashioning curb bump-outs and creating trails like the Greenway is much cheaper than building roads.

"The Greenway makes getting across south Minneapolis a breeze, and I think the fact that its free of cars and intersections, have encouraged a whole new group of bicyclists to try commuting and getting around by bicycle for the first time and get 'hooked,'" observed Hart. "I've been biking in the city for 20 years and it is much more pleasant to go across south Minneapolis on the Greenway than on 31st or 32nd Streets."

The city's traffic division is monitoring the situation at 28th and Hiawatha, according to Hamilton. Changes have been made to the signal timing, but there are no plans to make other changes at the intersection. "Our hope is that this is not a long-term thing. We don't want to put money into something that is for a short duration," Hamilton explained.

"We are interested in getting the bridge back in use as soon as possible," Hamilton said. "We recognize it is a really important crossing for bikers."

**Chocolat Celeste**  
ARTISAN CHOCOLATES  
652 Transfer Road, Suite 16A  
St. Paul, MN 55114 • 651.644.3823  
www.chocolatceleste.com

The Great South High Get Together  
**Annual Pancake Breakfast**  
Sunday, April 29  
8 a.m. to 1 p.m.  
at South High School

**\$6**  
age 10/under \$3  
pancakes, eggs,  
sausage  
juice, milk &  
coffee

**BUY  
LONGFELLOW  
LOCAL**

**Reddy Rents**  
Maintenance & Remodeling Equipment  
Trucks & Trailers  
Lawn Care Tools  
Trailer Haul Concrete  
LP Gas

**HIAWATHA REDDY RENTS**  
44th & Hiawatha • 722-9516

**NELSON** ELECTRIC INC.  
CONTRACTORS INC.  
est. 1963

Two Companies  
Same Great Service

<b>Electric</b>	<b>Solar and Construction</b>
Commercial	Thermal Hot Water
Residential	Photovoltaic
Industrial	Roof Vents
Restaurant	Remodel and Addition

**FREE** commercial lighting rebate analysis – call today for an appointment.

**Office Space for Lease**

**Robert Nelson – Owner** 612-724-9500  
www.nelsonelectricinc.com

Contractor's Lic. #20636575  
Electrical Lic. #EA001304

## Will people trust bridge when it reopens?

By **TESHA M. CHRISTENSEN**  
Will people trust the Sabo Bridge when it is reopened?

Longfellow resident Kevin Baumgartner isn't sure they will. "Its safety record, and the confidence and comfort that goes with it, has been shattered. People may possibly never again have as high of a confidence level with that bridge, and that, in itself, is unfortunate and concerning," Baumgartner said.

People he knows in other states have a lowered respect for Minnesota due to the collapse of the 35W bridge in 2007 and the issue associated with the Sabo Bridge now.

"The question I get most is 'What is wrong with you guys and your bridges?'" Baumgartner remarked.

He added, "Also, within in 24 hours of the Sabo bridge closure, the Washington Avenue bridge had Central Corridor construction debris (the size of large bricks) fall onto West River Parkway below it. So, three bridges, all within approximately one mile radius of each other, have had safety problems that causes the closures of roads. So, a poor public perception of bridges in the state/city by locals and others is natural."

On the other hand, Longfellow resident Katherine Debertin isn't any more concerned about crossing bridges now than she was before. "I kind of think of bridges the same way I do about flying - I learned to breathe through crossings and I learned to breathe through take-offs and landings whenever I'm flying," Debertin said.

Just as there are investigations into airplane crashes, they are into bridge issues. "I hope that it translates into better inspection or construction or de-

sign to prevent future incidents," remarked Debertin.

Howe resident Eli Effinger-Weintraub also hopes that the failure in the Sabo bridge is another wake-up call to examine infrastructure inspection and maintenance procedures and schedules.

Eric Hart, Longfellow's former representative on the Midtown Greenway Coalition Board, doesn't see a connection between the I35 bridge collapse and the closure of the Sabo Bridge. "This bridge was in no danger of falling down and nobody was hurt," he pointed out.

Hart added, "I think the Sabo bridge is unique enough that it won't effect people's confidences in other bridges. There are dozens of standard concrete bridges in the city and there haven't been dramatic problems with them. The Sabo bridge is unique and the first in the state, so, if anything, people will be critical that they tried to experiment with something that was never tried in Minnesota, etc. (or shouldn't have spent so much to make it look flashy)."

Avid bicyclist and Longfellow resident Mike Jones agrees with Hart that the Sabo Bridge damage is different than what occurred with the 35W bridge because it wasn't a catastrophic failure. He does however see how people would make the comparison "since the same contractor was hired for both bridges." The Illinois-based engineering firm Wiss, Janney, Elstner Associates, Inc. investigated the collapse of the 35W bridge and has been hired to determine what went wrong with the Sabo Bridge.

"As people are already using the bridge by going around the barricades, I think people will

still use the bridge," Jones said. "I do think that some people will realize crossing at the light at 28th and Hiawatha is fairly quick and a way to bypass the large grade change in the bridge and will thus not use the bridge."

DeWayne Townsend, co-chair of the Longfellow Community Council Environment and Transportation Committee has not changed his opinion on the safety of bridges in the area. "Two bridges among the thousands does not indicate a trend," Townsend said. "I still trust bridges."



### ABOUT THE BRIDGE

The Sabo Bridge was designed by engineering consulting-firm URS. It opened in November 2007, two months after the 35W bridge over the Mississippi collapsed. The bridge has a total length of 2,200 feet with the main span over Hiawatha at 220 feet. While Hennepin County oversaw construction of the bridge, it transferred ownership to the city of Minneapolis in 2008.

Getting the mail used to be a joy. Now it's mostly a trash pick-up.

That, I think, is the real reason for the decline of the US Postal Service.

Oh, it's true that the amount of mail we send has been reduced. For example, I sent only half the number of Christmas cards by mail that I did 10 years ago. The rest of my holiday greetings are by email, Facebook and text message.

It's also true that the post office isn't able to set its own standards. It's the largest political football in the country. It's supposed to be an independent organization, but there isn't any government-affiliated agency which is more subject to Congressional whim (except maybe the Congressional cafeterias). So the post office can't make the slightest change without checking with 535 people (all of the members of Congress).

Both of these factors have contributed to the decline of the postal service. But the real problem, as I see it, is that mail service is now primarily a way to distribute litter. Over the years, the postal service has been unwilling to set any limits on junk mail. Plus, it's nearly impossible to stop this stuff from coming. One reasonable limit could have been on the number of pieces of junk mail which can be delivered in a day or a week.

Another limit could have been on how advertising mail is delivered. What would be wrong with saying that advertising must be in an envelope? First class mail re-



## Hiawatha Notebook

By TOM GILSEAN

### Mail today mostly a trash pick-up

quires that. But not only do junk mailers not have to put their flyers and coupons in envelopes, they don't even have to pay as much for mailing their stuff.

As a result, the mail we want is wrapped up in a sea of paper trash and a few bills. There's nothing special about it anymore. So we have turned to other ways for 'special' messages, from phone calls to emails. For example, on St. Patrick's Day this year, I sent out electronic postcards.

I'd still like to send (and receive) letters and cards through the mail. And I have friends who say they'd like to do the same. But first we've got to clear out our mailboxes so there's room for real mail.

\* \* \* \*

Walking along Minnehaha Avenue the other day, I had an idea. What if more of the street were devoted to bicycles and pedestrians? The city took one big step some years ago when it added bike lanes. A next step would be narrowing the auto lanes and widening the sidewalks. I

wouldn't anticipate any changes in parking. But instead of having bikes on the left side of parked cars, they could be on the right side. I would imagine sidewalks 2-3 times as wide as they are now.

Maybe we wouldn't even call them sidewalks anymore. Instead, they would be lanes. So there would be car lanes, bike lanes and pedestrian lanes.

This would be a big change, of course. But we don't have to do it all at once. We could start with a test of two or three blocks.

What do you think about this idea? Do you have other ideas for improving the streets in our neighborhoods?

Summer is coming and so are the visitors. Time to start thinking about places to take friends and family who come to see us. Once again, I'm looking for ideas for places to take visitors around our neighborhoods. Minnehaha Falls is at the top of the list, of course. But after that? How about sending me a short list of places where you take summer visitors. I'll pass along these ideas in a future column.

\* \* \* \*

(Tom Gilsean has been writing a column for the Messenger since 1997. He welcome comments — and suggestions for future columns. You can write to him in care of the Messenger or via email: [tomgilsean@gmail.com](mailto:tomgilsean@gmail.com). You can also call him at 612-723-0259.)

## Keewaydin School Addition April Update

Architectural planning for Keewaydin's new addition is nearly completed. RSP Architects has sent "design and detail" plans out for cost estimates, the results of which are expected March 26. It is the hope of NENA staff that, should the construction part of project come in under its approximately \$11 million budget, perhaps some of the originally proposed non-programmatic (non-instructional) amenities could be reinstated. For instance, several of the Steering Committee members would like to see the entry "Commons" or lobby, expanded in width to make it a great gathering area for students and visitors. The last proposal shown to the committee showed the Commons reduced to an 18 foot wide space, not much wider than a modern school corridor.

That latest round of plans also added two basketball half-courts and a paved playing space at the southeast corner of the addition. This space shares some pavement with the new south loading dock, however the play area would be gated-off while delivery vehicles are using the area.

Soil boring tests show that at least part of the block has a deep layer of relatively unstable peat. It turns out that the block was an ancient swamp before being used as a dump at the turn of the century. As a result, 90 foot pilings will have to be installed before the foundation can be laid. NENA and MPS will be working with the contractors to minimize noise during the estimated 1-2 week installation period.

The addition now wears a handsome face, designed in part to carry through some of the original building's look in a modern structure. In part due to neighbors' concerns, much attention has been paid to reducing the visual mass of the building. Numerous breaks in sightlines, a single story over the cafeteria and loading area to the south, along with large areas of glass, help avoid a "big box" look. On the windowless east wall of the gym, architectural details in the brickwork help reduce the apparent mass of the façade. The flat roofs will be clean with no mechanical equipment. Part of those visual improvements were the result of efficient "stacking" of interior areas. The end result is a building that is far more compact than shown in early plans. For instance, the south wall of the addition is now 30 feet from the wading pool's fence rather than over the pool as originally shown. (Please see Tesha Christensen's article on the Park elsewhere in this issue.)

The project is on-schedule. The final plans are to be presented to the School Board on June 12, with construction expected to begin June 13th. Expect a public open house to unveil the plans sometime close to that date.

## NENA (Nokomis East Neighborhood Association)

By Rita Ulrich and Doug Walter, NENA Staff

### Growing Keewaydin, Burn Notice, and Taking Care of Business

citizen participation, advocacy and community building, consider volunteering your time, energy and talents. Your neighborhood needs you!

Please call the NENA office (612-724-5652) for more information and a description of board member responsibilities. And please, save the date: May 15,

### Block Leader Get-Together, April 2

Just a reminder: Our area Crime Prevention Specialist, Sue Roethele, is hosting a get-together for all Nokomis East block club leaders on Monday, April 2, 7:00 pm at the Nokomis Community Center.

This will be a chance for block leaders to get to know each other, share concerns and ask questions. You do need to register for the event by contacting Sue Roethele, MPD Crime Prevention Specialist, (612) 673-2839, or by email, [sue.roethele@ci.minneapolis.mn.us](mailto:sue.roethele@ci.minneapolis.mn.us)

### Where There is Smoke...

The Minnehaha Creek Watershed District is planning prescribed burns of the buffer vegetation at all three of the Lake Nokomis retention ponds. The MCWD's contractor, Minnesota Native Landscapes will be acquiring the necessary permits and performing the burns sometime in April to mid-May as weather conditions allow.

The Mpls Park Board will be sending out notices to nearby residents before the burns. If you have any concerns or questions, please call Tiffany Forner, MCWD Natural Resource Technician, at 952-641-4513

### Looking for Energetic Residents to Serve on NENA Board

NENA's 2012 Annual Neighborhood Meeting will be Tuesday, May 15, at which residents will be electing neighborhood representatives to the NENA Board. Eight board positions are up for election this year: two representative from each of the four neighborhoods (Wenonah, Morris Park, Minnehaha and Keewaydin).

The Board of Directors provides leadership and direction to the organization and is responsible for setting policy and ensuring good governance. Board members should be willing to serve on at least one committee, expect to attend 2-3 meetings per month, help with special events, and represent the neighborhood's interests.

If you are committed to neighborhood improvement,

6:30 pm at Crosstown Covenant Church.

### NEBA's First Meeting

NEBA is the Nokomis East Business Association. After several months of planning and research, a core group of business and community representatives are ready to hold the first annual meeting of the organization on Tuesday, 6:30 PM, Tuesday, April 17, at Nokomis Square, 35th Ave and 50th St.

All members of the business community are invited, including home based business owners, managers, and representatives of community organizations. Part of the meeting will be a mini-workshop to determine goals and initial activities. Attendees will elect Board members and have an opportunity to sign up to work on projects. You can visit the organization on facebook for updates.

### Upcoming NENA Meetings and Events

Block Leader's Get Together 6:30 PM, Tuesday, April 2, at Nokomis Community Center, 2401 E Minnehaha Pkwy. Call (612) 673-2839 to register.

Livability Group: 7 PM, Monday, April 9, at the NENA office, 3000 E. 50th St.

Nokomis East Business Association 6:30 PM, Tuesday, April 17, at Nokomis Square, 35th Ave and 50th St. This is an organizing meeting to elect Board members and set up working committees.

Community Gardens: 7 PM, Thursday, April 19, at the NENA office.

NENA Board: 7 PM, Thursday, April 26, at NENA.

Important NENA Dates for 2012: NENA Annual Neighborhood Meeting – May 15; Neighborhood Garage Sale – June 23; National Night Out – August 7; Minneapolis Monarch Festival – September 8; Night Before New Year's Eve Party – December 30.

Last-minute schedule changes are posted on our Calendar page at [www.nokomiseast.org](http://www.nokomiseast.org) or you may call (612) 724-5652.

# Winds of change are blowing with Minneapolis redistricting

By JAN WILLMS

The winds of change are blowing. And the change is coming to the Longfellow neighborhood, which will find itself removed totally from Ward 9 if the proposed redistricting map is approved.

Every 10 years, boundaries on a map are set to create election districts with equal populations. The purpose is to provide people with a fair representation, no matter where they live.

In 2010, Minneapolis voters approved an amendment that gave the Charter Commission the authority for redistricting the City. The Charter Commission also sets boundaries for the six Park and Recreation districts, as well as the 13 wards. The Minneapolis Board of Education draws up the boundaries for the six Minneapolis School districts. Council members have no input on how the ward redistricting is done.

Currently, Longfellow is served by Gary Schiff, Ward 9 council member; Sandy Colvin Roy, Ward 12 council member and Cam Gordon, Ward 2 council member.

But redistricting would bring some distinct changes.

For many Longfellow residents, it would mean that instead of picking up the phone to call Schiff about a problem, they would have a different council member to contact.

Longtime Longfellow resident DeWayne Townsend said he does not understand the reasons for moving the boundaries of Ward 9 as much as was done.

Although hearings were scheduled March 20 and 21 for more public input, he questions whether the community would have that much influence on revising the proposed ward maps. "As of late, the city has not been very accepting of neighborhood commentary, and I'm not so sure we'd have much to say," Townsend said. "Most residents are disillusioned by the city's blowing off their comments."

Kevin Baumgartner, an area resident who resides in Ward 12, said that he thinks it is a good thing that the Longfellow community as a whole has had three representatives.

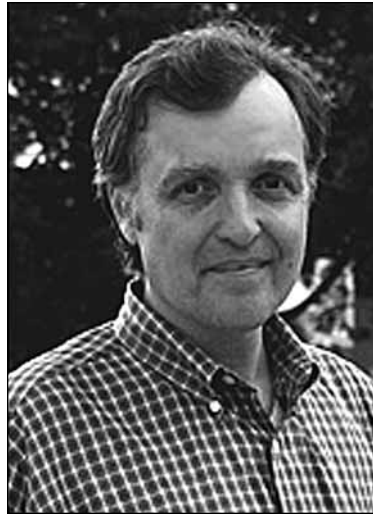
"Some organizations don't want their community split up in any way among multiple council members," Baumgartner said.

Although some have expressed concern that the wards are being split down the middle of streets, especially near the light rail, Townsend said that in general, he does not see that as a problem.

"The splitting street argument doesn't hold much water," he said. "Ward boundaries have always gone down the middle of streets. It should be split equally in two wards; otherwise, it creates tension among residents."

Townsend added that the Council has no override with these redistricting changes. The two public hearings offered residents an opportunity to voice their opinions about the boundary alterations.

According to Baumgartner, some members of the Charter Commission preferred that more input be received from the community before the proposed maps were drawn up, because of the sig-



Cam Gordon



Gary Schiff



Sandy Colvin Roy



John Quincy

nificant changes being made. But the majority wanted to get the maps out before the public, and then hold the hearings for residential comments. "I think they felt the discussion could go on forever if they didn't get the proposals out to the public," Baumgartner explained.

"The redistricting doesn't really affect the projects the Longfellow Community Council is working on," Townsend said. He indicated the projects would continue, but perhaps with a different council member in place.

Whether the redistricting would result in any concentration of poverty in a particular area brought forth some heated exchanges between Longfellow residents on an online forum.

Townsend said that the Longfellow area has always been pretty well-to-do by city stan-

dards. "Ward 9 will be losing that for some areas that are not as significantly well-endowed with rich folk," he said.

Baumgartner said he believed that poverty should have little or no bearing in the context of redistricting.

"Ward lines themselves don't

address or magically change the core issues of poverty; ward lines are imaginary," Baumgartner said. "Rather, it is important that whoever represents those poverty areas do so fully and wholeheartedly regardless of whether those areas are a small or large part of the wards. The poverty areas must be

as well represented as other areas. Ward lines, in themselves, don't achieve that goal."

Schiff said that from a public policy point of view, he believes more diversity in wards is better.

"The problem with putting all high poverty census tracts in one or two wards is that it marginalizes poverty and its conditions. To fight the root causes of poverty, you need multiple policy makers to be engaged, not just one or two," Schiff said.

The Nokomis East neighborhoods are not as greatly affected by the redistricting. They fall in Wards 11 and 12.

"The boundaries that are out there for the 11th ward are pretty consistent," said John Quincy, council member for that ward. "Although we lose a slice of the

**"The problem with putting all high poverty census tracts in one or two wards is that it marginalizes poverty and its conditions. To fight the root causes of poverty, you need multiple policy makers to be engaged, not just one or two."**

- Ward 9 Councilmember Gary Schiff

Continued on page 16

## Is Foot Pain Slowing You down?



2221 Ford Parkway, Suite 350  
St. Paul, MN 55116

*"My staff and I offer personal and professional care for all foot and ankle problems."*



Bradley R. Olson, DPM  
Member American College of  
Foot and Ankle Surgeons

Call today for an appointment  
651-698-8879

We accept most insurances • Lots of free parking  
[www.mnfootdoc.com](http://www.mnfootdoc.com)

Please join us at our next

## OPEN HOUSE

**Saturday  
April 21, 2012**

10:00am - 12:00pm  
*program begins at 10:15am*

Details & directions at  
[sunnyhollow.com](http://sunnyhollow.com)  
or call 651-690-2307

636 S. Mississippi River  
Blvd. St. Paul, MN 55116



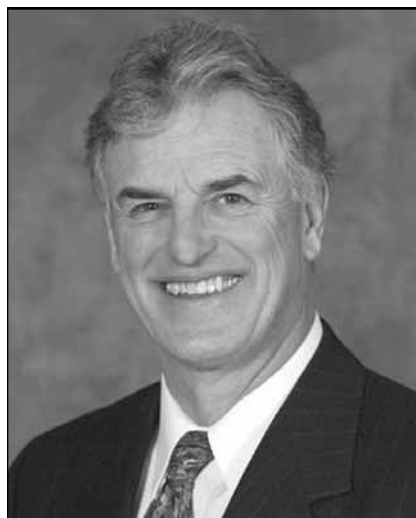
## Sunny Hollow Montessori

St. Paul's first AMI Accredited  
Preschool - Elementary Program



- Located on the bluffs of the Mississippi River in the Highland Park neighborhood - convenient to both Minneapolis & St. Paul
- Providing Montessori education for 30 years
- Mixed-age classrooms
- Serving children 33 months to 12 years of age
- **Call to schedule an observation today!**

SHM does not discriminate on the basis of race, color, religion, national or ethnic origin.



## Hennepin County Commissioner Peter McLaughlin

will be the featured speaker at the Longfellow/Seward Healthy Seniors 14th Annual Italian Dinner! All are welcome!

**Thursday, April 26,  
Doors open 5:30 p.m.**

**Dinner and Program  
from 6 to 8 p.m.**

**Minnehaha Academy,  
3100 W. River Pkwy.**

**Entertainment • Dinner • Silent Auction**

**Tickets are \$35 and available through the  
Healthy Seniors office at 612-729-5799.**

## 2012 EASTER SERVICES

**Palm Sunday April 1**  
Traditional Service 8:30 a.m.  
Contemporary Service 11:00 a.m.

**Holy Thursday April 5**  
Worship Service 7:00 p.m.

**Good Friday April 6**  
Worship Service 7:00 p.m.

**Easter Sunday April 8**  
Sonrise Service 7:00 a.m.  
Free Continental Breakfast 8:00 - 9:30 a.m.  
Easter Worship 10:00 a.m.



TRINITY OF MINNEHAHA FALLS  
5212 41 Ave. So. Minneapolis (612.724.3691) WWW.TRINITYFALLS.ORG

# Safe pedestrian crossings goal of recent Hiawatha Avenue project

Minnehaha-Hiawatha Community Works focuses on pedestrian/bicyclist safety at 32nd St., 38th St. and 46th St.

By TESSA M. CHRISTENSEN

Frustrated crossing Hiawatha Avenue either on foot or on bike? You're not alone.

After learning this is a safety concern of local residents, Minnehaha-Hiawatha Community Works (MHCW) began working to do something about it.

The plan is to target three intersections: 32nd St., 38th St., and 46th St. A number of changes will be made, according to Robb Luckow of Community Works.

The timing of lights will be adjusted so that people have more time to cross the wide street. Federal standards have recently changed, and these new recommendations will be followed. This project will tie into the traffic signal changes that will be done this year to help traffic flow better.

The area between the north and south lane will be widened so that those who haven't had time to cross will have enough space to safely wait for the next opportunity.

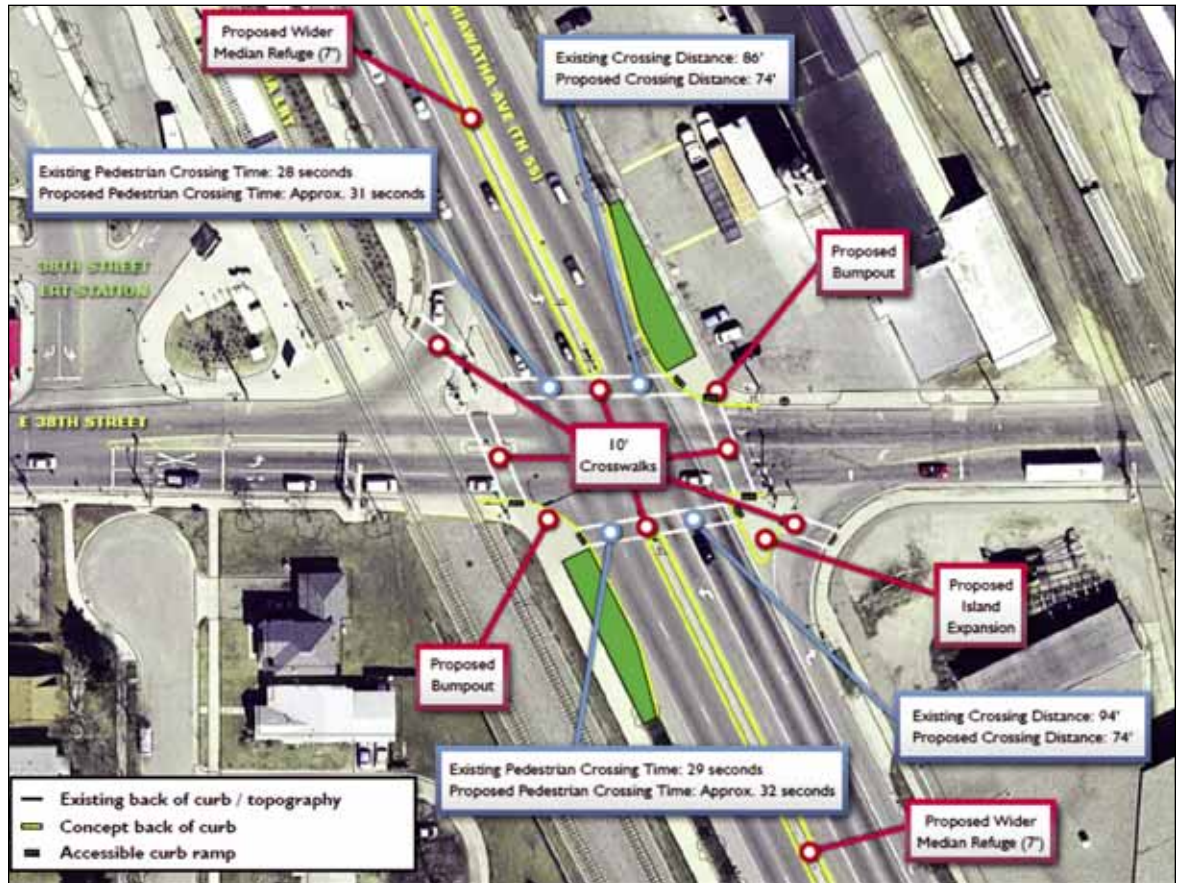
Bump-outs will be added to not only make motorists more visibly aware of pedestrians and bicyclists, but also to narrow the width of the crossings so that it doesn't take as long.

Several of the crosswalks are crooked; these will be straightened out and widened. The intersections will also be upgraded to meet standards set by the Americans with Disabilities Act (ADA).

Luckow acknowledged that often people aren't using the intersections to get to the light rail transit stations, particularly at the 46th Street station where the station is located north of the intersection. The hope is that when the intersection is improved, people will walk down there to cross because it will be much safer and more convenient.

"Biking on Hiawatha is not a pleasant experience not only from the high speed traffic, but the way cars stop and enter from the side streets," observed DeWayne Townsend, co-chair of the Longfellow Community Council Environment and Transportation Committee. "Cars block bike lanes by pulling out to far and turn without looking for bikes." He added that all the intersections are dangerous because of the high traffic on Hiawatha but he thinks the higher bike and pedestrian usage at the LRT stops make 38th and 46th the most likely to have an accident.

Continued on page 7



Several changes are being proposed for the intersection of 38th St. and Hiawatha Ave. The timing on the lights will be changed to give walkers and bikers more time to cross, and the median will be widened so that those who couldn't get across in time will have a safer place to wait. Longfellow Community Council (LCC) Executive Director Melanie Majors applauded the county for pre-planning rather than treating pedestrian improvements as an after-thought, especially in light of the pedestrian safety concerns that will come this year with the new commercial/residential development on the southeast side of the 38th/Hiawatha intersection.



WHAT COULD BE BETTER THAN GREAT HEALTHCARE?

**KNOWING IT'S ALWAYS CLOSE BY.**

At any one of our neighborhood clinics, you'll find a full range of primary and specialty care services, ready when you need them most. From pregnancy care to physical exams to senior care, your family has a home for healthcare – right in the neighborhood.

Call 612-873-3300 for same or next day appointments.

[www.hcmc.org/clinics](http://www.hcmc.org/clinics)



BROOKLYN CENTER | BLOOMINGTON | RICHFIELD | SOUTH MINNEAPOLIS | EAST LAKE



**St. Paul Blackhawks Soccer Club  
2012 Summer Camps**

5-8 year olds  
**Little Hawks Soccer Camp** June 25 – June 29 (half-day sessions)  
 9-14 year olds  
**Striker/Keeper Camp** June 11-15  
**No Boys Allowed! Camp** June 18 – 20  
**Specialty Camp** June 21 – 22  
**Soccer Day Camp** July 9 – 13

12-17 year olds  
**Competitive Player Camp** July 23 – 27

Details and registration at [www.blackhawksoccer.org](http://www.blackhawksoccer.org)



**“Learning at the Square”**

An educational opportunity in partnership with Nokomis Healthy Seniors



**Wednesday, April 11, 2012 1:30 p.m.**

**“Traditional and Non Traditional Techniques for Managing Pain”**

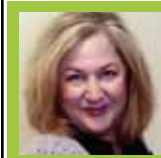
Learn old and new ways to live well with acute and chronic pain  
 Presented by Jane Hagstrom, Hospice of the Twin Cities

Nokomis Square Cooperative  
 5015 35th Avenue South, Minneapolis, MN 55417

For more information call 612-721-5077 or visit our

web site at [www.nokomissquare.com](http://www.nokomissquare.com)





# What's Shaking...

By COLETTE MULLENMASTER

## Nokomis Curves for Women's Jodi Hastings, Owner, Celebrates 10 years!

CM: This year you are celebrating 10 years in the neighborhood! How did you get into this business and what do you attribute your longevity to?

CC: I bought this Curves in Nokomis in 2005. I was a Curves circuit coach before that, so given that experience, combined with the loss of my mother and a little soul searching, it turned into a natural career/life choice for me. It is my personal goal that everyone leave in a better mood than when they arrived. I have an awesome staff and a handy, helpful husband who keeps the machines serviced and in working order for the members' success at all times.

CM: Going forward, how do you see your business growing/changing in this community?

CC: We knew when we took over this club that it was not going to be easy, but our hearts are in the right place. We feel strongly in doing whatever it takes so that our members have a great experience while attaining their health goals. We will continue to do fundraisers for the community and help women be the best they can be for many years to come!



Janice Wagner and Jodi Hastings

## Nokomis Curves for Women member Janice Wagner celebrates her 100 pound weight loss!



Eleven years ago, at 260 pounds and after a grim visit to my doctor, who informed me that at my current weight I was going to be facing some very threatening health problems, I joined Curves for Women, conveniently located in my

own neighborhood. It doesn't matter if you are young, old, fit, unfit, stylish or plain. No one is judging you. At the Nokomis Curves I feel like I am part of a family. The friendships, love and support I feel there are what keeps me going back and the weight off. Changing my diet to smaller, more frequent meals including more whole grains, natural products and less white sugar and flour is the other secret to my success. Thanks to Curves for Women, I've lost and kept off 100 pounds!

- Janice Wagner, member

Go to [www.longfellowmessenger.com](http://www.longfellowmessenger.com) for the link to Nokomis Curves for Women to check out spring specials and to see video of the workout.  
Curves for Women • 5007 34th Avenue South • Minneapolis, MN • 612.721.6008

## Crossing

Continued from page 6

"Anything that improves pedestrian use and safety is a good thing," observed Longfellow Community Council (LCC) Executive Director Melanie Majors. She noted that the biggest complaint she hears from residents is the traffic timing at the lights on Hiawatha.

Townsend believes that when the timing on the lights is changed, it will cut down on folks crossing against the light because they are tired of waiting.

"If the changes bring about the improvements that are expected it will significantly improve transportation in and out of the community," Townsend said.

The success of commercial and residential development is closely tied to whether people can get around by bike, car or foot, Majors pointed out. If people can't access an area, they won't go there. She applauded the county for pre-planning rather than treating pedestrian improvements as an afterthought, especially in light of the pedestrian safety concerns that will come this year with the new commercial/residential development on the southeast side of the 38th/Hiawatha intersection.

"Hennepin County is essentially heading those off by mov-

ing on the pedestrian improvements," Majors said.

In mid-March, Hennepin County, Longfellow Community Council, the Corcoran Neighborhood Organization, and Standish-Ericsson Neighborhood Association hosted three open houses to talk about recommendations to improve pedestrian crossings along Hiawatha Avenue.

The next step for Community Works is to identify potential funding sources to implement this project. According to Luckow, the total cost will be \$500,000.

Once the funds are obtained, the work will begin.

### WHAT IS COMMUNITY WORKS?

A project of Hennepin County, Minnehaha-Hiawatha Community Works collaborates closely with the city of Minneapolis, Met Transit and the Minnesota Department of Transportation — all the entities that have jurisdiction along Hiawatha. "It's a nice partnership between these four organizations," Luckow said.

The pedestrian improvement project is one of 16 projects laid out in the MHCW Strategic Investment Framework that was recently adopted by the Hennepin County Board of Commissioners. These infrastructure investments aim to:

- Improve the ability to walk, bike, drive, and travel to and through the corridor;
- Support business vitality and job creation;
- Create a diverse set of housing, commercial, and employment opportunities to serve the community;
- Enhance the sense of community while honoring its history; and,
- Promote environmental sustainability.

There are several positions open on the steering committee, which will oversee implementation of these projects. For more information, contact Robb Luckow at 612.348.9344 or [Robb.luckow@co.hennepin.mn.us](mailto:Robb.luckow@co.hennepin.mn.us).

The project area includes 28th Street south to Minnehaha Creek. The three intersections where changes will be made to improve pedestrian safety were identified as the top priority by residents at a variety of meetings over several years. Input was gathered at the Midtown Farmer's Market, LCC annual meeting, Longfellow corn feed, light rail stations, door-to-door, and via the web site.

"People are looking forward to the opportunity to make changes in the area," said Luckow.

Happy Easter! *"...dedicated to bringing peace by pleasing the palate"*

**Gandhi Mahal**  
Fine Indian Cuisine

3009 27th Ave South Mpls, MN 55406  
1 block East of Minnehaha off Lake Street  
(Lake Street/Midtown LRT station)

Come celebrate New Years Eve with our Special Buffet Dinner

**612-729-5222**  
[www.gandhimahal.com](http://www.gandhimahal.com)

Open 7 days a Week

**Lunch 11-3pm**  
Daily Lunch Buffet

**Dinner 5-10pm**  
Live Acoustic Music  
(Wed-Sun evenings)

"Best Indian Food"  
- KARE 11/metromix

"Best Indian Restaurant"  
- City Pages Readers Poll 2009

Start YOUR Success Story for \$10

Come find out what success looks like on you.

Every day, women who thought they couldn't get fit find out that they can at Curves. Now's the time to take the first step toward YOUR success.

Meet real women finding real success at [curves.com/story](http://curves.com/story).

[curves.com](http://curves.com)

**Curves**

New guests only. Offer not based on any enrollment. Not valid with any other offer. Some restrictions may apply. Valid only at participating locations through 5/31/12. © 2012 Curves International, Inc.

612-721-6008 • 5007 34th Ave S Mpls, MN 55417 • [curvesmpls.com](http://curvesmpls.com)

FROM SOUTHERN ITALY TO SOUTH MINNEAPOLIS FOR UNDER \$20!

**al Vento**

5001 34th Ave. S., Minneapolis 55417

**612-724-3009**

HOURS: Lunch: Weds.-Sat. 11:00 am-2:00pm  
Dinner: Sun.-Thu 4:30pm-10:00pm  
Fri.-Sat. 4:30pm - 11:00pm

# Prevention chore list in spring can be important advance work for home, garage and garden

By DEBORAH BROTZ

## HOME & GARAGE

### Gutters and Downspouts

- Remove debris from gutters and downspouts and patch any holes. Make sure the downspouts direct water at least 5 feet away from your foundation walls.

Reattach gutters that have pulled away from the house.

Run a hose on the roof and check for proper drainage. If leaks exist, dry the area and use caulking or epoxy to seal the leak.

### Windows and Doors

- Inspect/replace caulk on windows, doors, and other penetrations, such as dryer vents and cable wire holes.

Clean screening and check for holes. If holes are bigger than a quarter of an inch, that is plenty of room for bugs to climb in.

Patch holes or replace the screen. Save bad screen to patch holes next year.

Tighten or repair any loose or damaged frames and repaint.



Replace broken, worn, or missing hardware.

Wind can ruin screens and frames if they are allowed to flap

and move so make sure they are securely fastened.

Tighten and lubricate door hinges and closers.

### Furnace

- Replace or clean your furnace filter. It should be checked once a month and replaced or cleaned as needed.

Have a professional air conditioning contractor inspect and maintain your system as recommended by the manufacturer.

### Hot Water Heater

- Check your water heater. If you have a gas-fired water heater, make sure it is venting properly.

Check around the base of your water heater for evidence of leaks. If water leakage or rust is found, the water heater should be replaced.

### Plumbing

- Check the shutoff valve at each plumbing fixture to make sure they function.

Know the location of all valves and what equipment and water lines they serve.

### Siding, Fascia and Trim

- Clean siding with a pressure washer to keep mold from growing. Check all wood surfaces for weathering and paint failure.

Examine fascia or soffit boards. Replace if they are soft or rotting because they may allow rain in your attic.

### Foundation

- Check foundation walls, floors, concrete, and masonry for cracking, heaving or deterioration.

### Roof

- Inspect roof surface flashing, eaves, and soffits. Check flashings around all surface projections and sidewalls.

Inspect the roof for damaged, loose or blistered shingles.

## LAWN & GARDEN

### Lawn Care

It is important that you wait until the soil temperatures rise and you get some growth before attempting any renovation program on your lawn.

- Rake to remove leaves and to control thatch.

If you have a moss problem, apply a product called lawn sand to your lawn.

Aerate your lawn in the spring to help encourage root growth, relieve compaction, and dry out any wet areas on the lawn.

If your lawn is riddled with bare patches due to dog spots, heavy traffic or neglect, apply grass seed to fill in those bare patches. The solution is called "over seeding."

Lawns can be fertilized organically by using compost and mulching mowers or with chemical fertilizers.

### Trees & Shrubs

- Cut back and trim all vegetation and overgrown bushes from structures.

Clean up fallen limbs, branches and other debris around the home to discourage the proliferation of wood-eating insects such as termites.

### Flowers & Garden

Resist the urge to start digging in your flower beds too early. When it's dry enough, you can start to dig beds and add compost or manure in preparation for planting.

Minnesota will be lacking shades of purple this spring. When temperatures warmed this winter, lilac branches began to bud out, only to be frozen off when the mercury dropped to zero. Some home gardeners watched their crocuses and daffodils come out of dormancy in December, only to freeze back down. Flower beds will have spotty shows of crocuses and daffodils, but they should come back next year. For now, protect them by covering them up.

Despite a lack of showy flowers this spring, people should not be in a rush to prune the bushes. Leave them alone and chances are their branches will be filled with blossoms in 2013.

Gardeners who didn't use mulch last fall can protect plants by covering them now. It's a good time to spread mulch around trees, shrubs, and perennials. Bags of mulch can be used, but if they are not available, use leaves.

Remove a winter protection of mounded earth from roses. Prune rose bushes before they start to leaf out.

Remove spent flowers from bulbs, but leave the rest of the plant as is.

Pull weeds from your beds and borders before they have a chance to take hold and spread.

Tend to your compost if it has been neglected over the winter. If you do not have a compost bin, start one.

Add new plants in your garden such as hardy annuals and summer blooming bulbs after all threat of frost has passed.

Stake plants that may be prone to wind damage during unpredictable spring weather.

If you're itching to get your hands in the dirt gardening, here are six early spring vegetables that you can start, from seed or transplants, outside before the danger of frost is past.

You can plant peas up to two months before the average frost free date. You can begin direct seeding spinach in the garden four to six weeks before the average last frost date. For best-tasting beets, sow directly outside up to one month before the average last frost date. You can sow carrot seeds direct in to the garden up to one month before the average last frost date. You can plant lettuce directly in the garden up to six weeks before the average last frost date. Radishes may be sown outdoors as early as April 10 in Minnesota. The average last frost date of St. Paul is May 21.

## Do you have aging parents?

Augustana Apartments has a place for them near downtown and near YOU.

### Near Everything:

Orchestra Hall  
Guthrie Theater  
Restaurants  
Museums  
Universities  
Parades  
Medical Clinics  
Hospitals

### Quotes from residents:

"I fell so at home here. I wish I wouldn't have waited so long to move in."

"It's a close-knit community where everyone is like family. I can have my privacy while being part of a dynamic Christian community"

"Everything you need is right here, but there's also freedom and support to venture out whenever you want to"

"My family appreciates the easy access from the suburbs for visiting, and I love being so close to all that the Twin Cities has to offer"

Call  
612.238.5255  
for a Tour

 **Augustana Apartments**  
Augustana Apartments of Minneapolis  
1510 11th Ave S, Minneapolis, MN 55404  
www.augustanacare.org



# Longfellow neighbors review merits of Blue Door Pub license application

By JAN WILLMS

A mixture of concern and anticipation was voiced at the March 21 hearing for the Blue Door Pub in its pursuit of a wine and strong beer license at its location at 3448 42nd Ave. S. in Longfellow.

The hearing, held at the Longfellow Recreation Center, provided an opportunity for area residents to comment on their reactions to the proposed pub opening. The Blue Door currently is located on Selby Avenue in St. Paul and is hoping to expand its Juicy Lucy burgers and craft beers to a Minneapolis venue as well.

Minneapolis License Inspector Julie Casey told the crowded gathering at the center that no public vote would be held on the license, but the community would be heard and recommendations passed along to the City.

The Blue Door's license would be based on exemptions to the rule, and as such a series of restrictions apply. The business cannot have a physical bar in place. Seventy per cent of food must be served for every 30 per cent of alcohol served. Food must be ordered first or at the same time as any alcoholic beverage; a customer cannot enter and order just a glass of wine or bottle of beer.

According to Casey, the business also must have security plans in place. She said the Blue Door has met these requirements. Because of its proximity to the Sanford School, it cannot have any exterior signs advertising alcohol.

One resident who lives right behind the Blue Door's new location said he represented a group of 9 households and 14 individuals.



The Blue Door currently is located on Selby Avenue in St. Paul and is hoping to expand its Juicy Lucy burgers and craft beers to a Longfellow venue as well. (Photo by Stefanie Berres)

"We have some concerns because we live so close," he said. He was concerned that a happy hour starting at 8 p.m. could result in some customers drinking a lot, leaving later and slamming doors and making noise.

"We also want smoking on the south side of the building," he said. He added that he does not want customers parking in front of his driveway, or lining up in queues outside the bar. He asked that the Blue Door close at 10 p.m. weeknights and no later than 11 pm on weekends, based on the closing hours of other area bars.

Another resident expressed that he could not be more excited about the Blue Door moving in. "We need to keep money and activity in our community, and it is far more attractive if we have a

balance of commercial and residential," he said.

Several attending the meeting were from St. Paul, and lived near the Blue Door in that location. All offered positive experiences with the business, and several praised the business owners, Jeremy Wornner and Patrick McDonough, as being good family men and good neighbors.

"I love seeing more things develop in our neighborhood that we can walk to," said another audience member.

Concerns about added traffic, late hours and some of the smells that accompany a pub and restaurant were raised.

"My property is right next to the Blue Door in Minneapolis," one community member said. "I have young single mothers as ten-

ants, and their kitchens and bedrooms will be only nine feet away from the Blue Door. It is not a bad business, but the wrong location."

He emphasized the smell that would be present.

"Would you rent from me with that smell? It devalues my property," he said.

The Blue Door owners emphasized that they have a large budget to work on overcoming any odor or related problems. They said they are working on getting new green-forward systems that will get rid of grease smell.

"Unless you have an air scrubber, I will still smell it," the next-door property owner countered.

Casey said that dealing with any odor problems could be a part of the license restrictions.

The majority of people attending the meeting, however, expressed their delight at the Blue Door wanting to come into the neighborhood and providing another source of food and drink they could walk to.

"This is what this neighborhood needs at this time," said one resident. "I drive by and see them making that building look good, and I say bravo!"

Another potential neighbor of the Blue Door spoke up. "If the city denies an alcohol license or puts onerous restrictions on it, we'll have just another vacant property."

Ward 12 Council Member Sandy Colvin Roy said she was not surprised by the amount of support or concern by the nearest neighbors. She said conditions of the license are designed to help make the licensee fit into the neighborhood.

"The first year of business is also reviewed at the end of the year," she said, "and the city keeps track of complaints or problems, as well as positives."

Casey said she would discuss the comments made at the meeting with the Blue Door Pub owners and send a report to the City Council. As of this writing, negotiations were still continuing regarding the proposed hours of operation.

Once that has been resolved, the license application goes to the Regulatory, Energy and Environment Committee of the Council on April 16. The full City Council will determine whether the license is approved at its April 27 meeting.

**THE FIXERY**  
 EXPERT WATCH, CLOCK & JEWELRY REPAIR  
 Battery Replacement • Watch Bands  
 Keys Duplicated • Engraving

**1/2 OFF**  
 ANY WATCH BATTERY REPLACEMENT  
 Most battery replacements regularly priced at less than \$10.  
 Expires 4/26/2012

HIGHLAND PARK  
 651-690-5524  
 EDINA SOUTHDAL E CTR  
 952-929-7122

**BRUSHED MONKEY**  
 An Artistic Painting Co.

We Paint Houses....

Quality Finishes,  
 Professional Performance,  
 Good ol' Know-How.

Inside and Out...  
**Brushed Monkey Inc,**  
**612-803-1356**

Photo courtesy Rock Spring Farm

**Seward Co-op GROCERY & DELI**

Community-Supported Agriculture Fair 2012

**CSA FAIR**

Share your commitment to the local food economy.

SATURDAY | APRIL 21 | 11 A.M. – 3 P.M.

2823 E. Franklin Ave. | Minneapolis | 612-338-2465 | www.seward.coop

# Decommissioning of Ford Plant continues

By JANE MCCLURE

Decommissioning of the Ford Motor Company's Twin Cities Assembly Plant continues this winter, with building demolition likely to start in May. How that demolition will affect the surrounding residential and commercial neighborhoods is a worry raised March 5 by members of the Ford Site Planning Task Force.

Task force members and neighborhood residents at the meeting said they are concerned about noise, dust and increased truck traffic as a result of the demolition, which could continue until year's end. They asked Ford Land representatives at the meeting to take steps including hosting pre-demolition neighborhood meetings, having a phone hotline to call if there are complaints and using other measures to monitor potential nuisances.

Decommissioning and its impacts will be discussed when the task force meets again April 23. Several task force members said more needs to be done now to prepare the neighborhood for the demolition impacts.

"I think we need to be concerned about the people who live so physically close to the site, especially those south of the plant and in the high-rise," said task force member and neighborhood resident Angie Kline. "The more information we can get to them, the better."

Decommissioning Project Manager Chris Johnson said Ford will let neighbors know about work hours and potential noise, dust and traffic impacts caused by demolition. Ford got bids for the work last week; review of the bids is underway. The contractor will be selected and ready to go by May.

Work hours for demolition haven't been set yet but will be publicized. Ford will have a phone hotline for concerns and com-

plaints and will meet with neighbors before buildings start to come down. The site will be fenced to keep people out.

The plant closed in December. Ford Land, the real estate arm of Ford Motor Company, is preparing the property for sale. Johnson said St. Paul is the 14th closed Ford manufacturing facility he had decommissioned in 5 1/2 years. "It's a crummy job, but these are the things Ford Motor Company needs to do in order to survive." He recently wrapped up work on a plant site in Norfolk, Va.

Work on St. Paul's decommissioning and demolition began in September 2011 with talks with city officials, Johnson said. Since the plant closed equipment removal has started. Some equipment will go to other Ford facilities; other equipment will be sold or scrapped. Pits and trenches used in the manufacturing process will be cleaned and then filled in. A large elevator shaft will be barricaded.

The goal for the demolished buildings themselves is to reuse or recycle 70 to 80 percent of the materials.

An environmental assessment of the buildings has continued. Before buildings can be torn down, all hazardous materials must be removed. No surprises have been found in the assessment of buildings, said Johnson. Asbestos, lead and mercury switches are the most common hazardous materials that must be removed and disposed of. Johnson said those materials are typical of what can be found in older industrial buildings.

Utilities must be disconnected. Ford would like to keep water service in place for as long as possible for fire protection purposes, Johnson said.

During demolition Ford

would like to immunize truck traffic impacts on the neighborhood by hauling much of the demolition debris out by rail, Johnson said. Trucks would use the same routes used when the plant was open.

Neighborhood residents had questions about water runoff during and after plant demolition. Storm water management is part of the demolition and site cleanup plan, Johnson said. Exposed soil is another concern. One focus of the building demolition will be to disturb existing concrete slabs as little as possible. That will help contain soil. Eventually, when the site is redeveloped, the old slabs and paved areas would be removed.

The first building to come down will be the paint shop, which will be demolished in May and June. Demolition will then be sequenced, with work on the main building starting in late summer or early fall. There aren't plans to demolish the old Ford power house, which is beside the Mississippi River at the base of the bluff. Johnson called the power plant "a very unique asset" and Ford Land officials haven't decided what to do with that building yet.

The Minnesota State Colleges and Universities (MnSCU) Training Center will be the last building to go. Ford and MnSCU officials have said they have no use for the building, and that no prospective Ford buyer has suggested a use for the building.

But there has been community debate as to whether or not the training center should be torn down or reused. Johnson said a decision on the center needs to be in place by September.

Johnson said no final decisions have been made on training center reuse. "A very sensitive subject for us is the training center," he said. No decision has been made on the building's future. "I

wish I could tell you what is happening with this building but I don't know yet."

City officials and state legislators are asking that Ford Motor Company repay the state of Minnesota for state funds used to build the training center. St. Paul city officials told a legislative committee last month that they want the \$1.8 million used to provide job creation incentives tied to site redevelopment.

St. Paul's request was heard last month by the House Jobs and Economic Development Commit-

tee. Rep. Michael Paymar, DFL-St. Paul, authored a bill that would put the \$1.8 million in a special Minnesota Department of Employment and Economic Development fund. The fund would be used to attract new employers to the site. Among those testifying for the bill was St. Paul Planning and Economic Development (PED) Director Cecile Bedor, who said the funds would help the city in its efforts to redevelop the site. If the money isn't dedicated toward site redevelopment, it goes into the state general fund.

## Weisman Art Museum hosts the ANCIA Saxophone Quartet

The ANCIA Saxophone Quartet will perform at The Weisman Art Museum (333 East River Parkway, Minneapolis, MN 55455) on the campus of the University of Minnesota-Minneapolis on Sunday, April 1, at 7 p.m.

The concert will feature a masterwork of the repertoire, Alexander Glazunov's Quartet for Saxophones. One of his last compositions, Glazunov's Quartet is a monumental, multi-movement masterpiece on par with the large-scale string quartets of the romantic era.

Also included will be three Fantasy Etudes by American composer William Albright. Albright makes creative use of unique contemporary performance techniques to explore and deconstruct sounds familiar to the listener including quarter tones to imitate bagpipes and extended range to depict a variety of horns, sirens and even sea gulls. Caroline Mallonee's Hammering Away (at the great unknown) is a fascinating exploration of rhythmic motives and



The ANCIA Saxophone Quartet will perform at The Weisman Art Museum (333 East River Parkway, Minneapolis, MN 55455) on the campus of the University of Minnesota-Minneapolis on Sunday, April 1, at 7 p.m.

their transformation and development.

The Quartet will also perform works by Charles Ives and Jean Absil. Admission to the museum and concert is free and open to the public.

**WE CAN HELP MAKE ALL YOUR HOME IMPROVEMENT DREAMS COME TO LIFE**

Many Minneapolis neighborhoods still have NRP dollars available for your home improvement.

Contact us to see what your neighborhood has to offer.

cee  
Center for Energy and Environment

Minnesota Housing

For complete program details call (612) 335-5884 or visit [ceeloans.org](http://ceeloans.org).

Kitchen remodel?  
siding?  
water heater?  
landscaping?  
bathroom remodel?  
roof?  
windows?

**ADVERTISING WORKS!**

*"Advertising with the Messenger puts us in front of our customers and neighbors more often and reminds them of our delicious food."*

Chef Jonathan Hunt  
Al Vento

Let the Messenger create your next ad campaign!

Longfellow / Nokomis  
**messenger**

[www.LongfellowNokomisMessenger.com](http://www.LongfellowNokomisMessenger.com) • (651) 917-4183



# Longfellow Community Council

Serving Longfellow, Hiawatha, Cooper, and Howe neighborhoods

## LCC has open board seats – join us!

Spring is here and in a few short weeks LCC will be electing its board of directors for 2012-2013. Elections will be held during the April 25th General Membership meeting (see details on this page). If you have ever considered participating in the neighborhood as a board member, now is the time.

### Open seats:

Longfellow Neighborhood – 2 seats (1 and 2-year terms)

Cooper Neighborhood – 1 seat (2-year term)

Hiawatha Neighborhood – 2 seats (1 and 2-year terms)

Howe Neighborhood – 1 seat (2-year term)

Community Representative – 3 seats (1-year term)

Business Representative – 1 seat (1-year term)

At-Large Representative – 1 seat (3-year term)

It's easy to run for a LCC board seat. Simply show up to the General Membership meeting and have someone nominate you or nominate yourself. Board membership is a great way to get to know your neighbors and your community! For additional details or if you have questions, please contact Melanie at 612-722-4529 ext. 4 or via email at [melanie@longfellow.org](mailto:melanie@longfellow.org)

## Hasta la Vista, Baby!

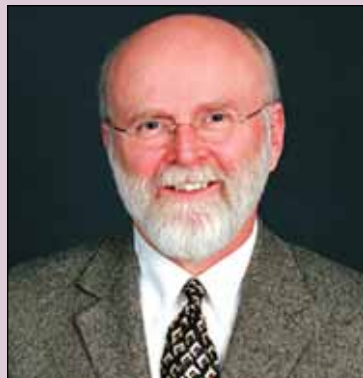
By Joanna Solotaroff, Community Organizer

I wanted to take this opportunity to announce my leave of absence from the Longfellow Community Council. I will be spending the next two months studying radio production in Cape Cod. I'd like to thank LCC Staff and volunteers for

being so supportive of me as I pursue this opportunity and for taking on extra responsibilities to ensure a smooth transition in my absence. Our talented former staffer, Kim Jakus, will be back to provide staff support while I'm away. Eat some pie for me at the annual meeting and elect some really great board members. I'll see you in June!

## The Board Experience

Mike Mann, Community Representative



I have lived in Longfellow most of my life yet just in the last few years I received the opportunity to give back by serving on the LCC board. I have found my time on the board to be exhilarating, challenging, hilarious, trying and amazing.

The work on the river gorge, contributing to the creation of the city's first fully accessible playground, supporting the block clubs, helping Restorative Justice to thrive, sustaining friends and neighbors in their efforts to maintain their homes, giving opportunities to the many voices that live within this community, gathering to celebrate this great place; the list is endless.

More importantly, you should know that the quality of the people serving on the LCC board is exceptional. Even though we have not always

agreed, (that would be so boring) I am very grateful to have had the chance to serve with individuals/neighbors who truly know what it means to be a citizen in the fullest sense.

The opportunity to participate in nurturing this thriving, sustainable community in this way should not be missed.

## East Lake Street Market Study Report

Sam Newberg of Joe Urban, Inc. gave a final presentation of a market study of East Lake Street to the Longfellow Business Association in March. The market study sought to assess the commercial real estate market on East Lake Street (between Hiawatha Ave. & the Mississippi River), identify causes of high vacancy, and explore strategies to revitalize the street and opportunities for new business. The market study was funded through a Great Streets Businesses Development grant from the City of Minneapolis. The Grant is also funding a project to install local artwork by the League of Longfellow Artists (LOLA) in vacant storefronts on East Lake Street.

Some of the findings of the market study include:

- The East Lake Street corridor has an oversupply of commercial real estate
- Efforts to revitalize the East Lake Street should focus on strengthening existing business nodes rather than the corridor as a whole
- Redeveloping some commercial properties into residential would help reduce vacancy and add vitality to the corridor

Sam will give a presentation on the market study to the Longfellow Community Council at its annual meeting on April 25th.

## No Pie Charts! Only Pies!

Get a Preview of Take a Look at Longfellow—the online campaign about everything we love in Longfellow—and learn how you can get involved!

See the Longfellow Community Council's website makeover!

Bring food for the Minnehaha Food Shelf and win prizes!\*

Meet great organizations in our community!

Elect board members you believe in!

Learn the results of the East Lake Market Study!

Wednesday, April 25, 2012

RESOURCE FAIR 6-6:30pm • PROGRAM 6:30-8pm

Minnehaha Academy North Campus, 3100 W. River Parkway

Join the Longfellow Community Council for our Annual Meeting, Pie Potluck & board elections! Bring a pie to share, get updates on what's happening in Longfellow, network at our resource fair and elect board members! Learn the results of the East Lake Market Study, with recommendations on how to reduce vacancies along East Lake Street! Childcare is available so bring the whole family!

\*Receive one ticket for each non-perishable food item that you bring for the Minnehaha Food Shelf. Limit ten tickets per person, but please bring as much as you are able to donate.

Email [joanna@longfellow.org](mailto:joanna@longfellow.org) for more information.



## Calendar of Meetings and Events

# April 2012

Meetings are free and open to the public, and are accessible. Check the calendar on our website [www.longfellow.org](http://www.longfellow.org)

### Advancement Committee

Wednesday, April 4  
7:00 - 8:00 pm  
Fireroast Mountain Café  
3800 37th Avenue S  
FFI: [joanna@longfellow.org](mailto:joanna@longfellow.org)

### Neighborhood Development Caucus

Monday, April 9  
6:30 - 8:00 pm  
LCC Office, 2727 26th Ave S.  
FFI [spencer@longfellow.org](mailto:spencer@longfellow.org)

### Community Connections

Tuesday, April 10  
6:30 - 8:30 pm  
LCC Office, 2727 26th Ave S  
FFI: [joanna@longfellow.org](mailto:joanna@longfellow.org)

### Board of Directors

Thursday, April 19  
6:30 - 8:45 pm  
Brackett Park, 2728 39th Avenue S  
FFI: [melanie@longfellow.org](mailto:melanie@longfellow.org)

### Environment and Transportation Committee

Tuesday, April 24  
6:30 - 8:00 pm  
Hiawatha School Park 4305 42nd St. E  
FFI: [spencer@longfellow.org](mailto:spencer@longfellow.org)

## Longfellow Community Council

2727 26th Avenue So., Minneapolis, MN 55406  
Phone: 612-722-4529 • Fax: 612-724-1024

[www.longfellow.org](http://www.longfellow.org)

Melanie Majors  
Ruth Romano  
Joanna Solotaroff  
Spencer Agnew

Executive Director  
Office Staff  
Community Organizer  
Housing and Environment  
Coordinator

[melanie@longfellow.org](mailto:melanie@longfellow.org)  
[ruth@longfellow.org](mailto:ruth@longfellow.org)  
[joanna@longfellow.org](mailto:joanna@longfellow.org)  
[spencer@longfellow.org](mailto:spencer@longfellow.org)



## Behold! The Story of Pie!



To fully appreciate the glory of Pie at our Annual Meeting, staff at LCC felt that it is our duty to inform residents of the origin of this wondrous dessert. Pie dates back to 9500 BC, originally made of oats, wheat, rye, or barley wrapped around honey and were even found inside the tomb of the Pharaoh Ramses. However, it was the Greeks who invented pie pastry, and pie recipes appeared in Roman cookbooks as early as the 1st century. Pies evolved into a self-contained meal popular among sailors, travelers, and workers. Pilgrims brought their pie recipe to America and although Apple pies were popular in England, it became a

staple at colonists' meals, thus the saying "As American as Apple Pie." Some other interesting facts about pies:

1. Peacock pie was served to royalty in England
2. Throwing a pie in someone's face was established as a comedic bit in 1909 by Mr. Flip.
3. Raisin pie is also called "funeral pie" because it is traditionally served at funerals and wakes in Pennsylvanian Amish communities.
4. In Shakespearean England "courage pie" contained ingredients thought to be aphrodisiacs including sweet potatoes, wine and sparrow brains.
5. The No Pie Charts! Only Pies! Annual Meeting is the most fun annual meeting ever.

# In Our Community

## Lorna Landvik at Lake Nokomis Lutheran April 21

As part of its 100-year anniversary celebration, Lake Nokomis Lutheran Church welcomes the neighborhood to hear local author, actor, playwright, proud hockey mom and daughter of our congregation, Lorna Landvik, speak on Saturday, April 21, at 10 a.m.

Landvik's portfolio includes *Patty Jane's House of Curl* (1996), *Your Oasis on Flame Lake* (1998), *The Tall Pine Polka* (2001), *Welcome to the Great Mysterious* (2002), *Angry Housewives Eating Bon Bons* (2005), *Oh My Stars* (2005), *'Tis the Season* (2008) and *The View from Mount Joy* (2008).

Landvik will conclude the morning with a book signing. Bring your book or purchase one at the event (limited quantities will be for sale).

While this meet-the-author event is free, attendees are encouraged to bring a non-perishable food item that will benefit Minnehaha Food Shelf.



Lorna Landvik

For more information, please call the church at 612-729-2323.

Lake Nokomis Lutheran Church ([www.LakeNokomis-Church.org](http://www.LakeNokomis-Church.org)) is a community of faith of the Evangelical Lutheran Church in America (ELCA) and is located at 5011 - 31st Avenue South in south Minneapolis.

## Spaghetti Dinner at Faith Church

Faith Ev. Lutheran Church, 3430 E. 51st Street, will host a Spaghetti Dinner on Friday, April 27, from 4:30-7:30 p.m. Food will be provided by Fat Lorenzo's. Tickets are \$8 for adults, \$5 for Children 5-12 years of age and under 5 years old free. Tickets can be purchased at the door or call the church at 612-729-5463 or email - [felc@q.com](mailto:felc@q.com)

## Niedner coming to Christ Church April 22

The Rev. Dr. Frederick Niedner, Professor of Theology at Valparaiso University, is coming to Christ Church Lutheran on Sunday, April 22. He is the grandson of Pastor Friedrich Niedner, the first full-time pastor of Christ Church 3244 34th Avenue South, Mpls.

Dr. Niedner will preach at the 9:30 worship service and teach the adult forum that morning. His session is titled "How Do You Know a Resurrected Person When You See One?" and will address how the four Gospels respond to questions about Jesus' resurrection and what this means for us. The forum will start promptly at 11:10. Dr. Niedner will talk briefly about his grandfather before beginning the Bible study. We hope you can join us for the entire morning! Christ Church Lutheran is a welcoming congregation of the ELCA.



The Rev. Dr. Frederick Niedner, Professor of Theology at Valparaiso University, is coming to Christ Church Lutheran on Sunday, April 22.

## Gardening for Birds - April 11

Love watching birds in your yard? Folks living near the Mississippi River fly-way have opportunities to view many different types of birds. Learn how to make your yard more attractive to migratory as well as year-round species. Longtime DNR birding expert Carrol Henderson will speak at the Longfellow Garden Club's April 11th meeting about birds and the plants birds love.

Plan to take part that night in the Silent Auction that benefits the Club's Speaker Fund.

Bring an item or two, and come prepared to bid a modest amount to help make the Auction successful. Garden Club meetings are free and open to everyone. The program will be 7-9 p.m., April 11, at Epworth United Methodist Church, 3207 37th Ave South.

## World Day of Prayer May 3

A World Day of Prayer event will be held at Faith Ev. Lutheran, 3430 East 51st Street, on Thursday, May 3, from 9 - 11 am. Coffee and refreshments will be served at 9 am with the service beginning at 9:30 am. Men and Women are invited to attend.

## LBA meets April 12 at Riverview Cafe

Longfellow Business Association holds its Annual Meeting on Thursday, April 12 from 12 noon - 1:30 p.m. at the Riverview Cafe 3749 - 42nd Avenue S. A casual, seasonal lunch is available for \$10/per person payable at the door. We'll be doing business at the meeting - Annual Budget:

2011 review; 2012 proposed; Board of Directors elections, and goal setting for 2012. Please RSVP [ruth@longfellow.org](mailto:ruth@longfellow.org) or 612-722-4529x1

## Nutrition Assistance Program on April 17

Join Longfellow/Seward Healthy Seniors and Minneapolis Community Education for a presentation about the Supplemental Nutrition Assistance Program (SNAP) on Tuesday, April 17 at 10:30 a.m. at Holy Trinity Lutheran Church, 2730 E. 31st Street. Eligibility guidelines have been revised, allowing more seniors to qualify for Nutrition Assistance. As an additional resource, the Meals on Wheels Program will also be discussed. Contact Longfellow/Seward Healthy Seniors at 612-729-5799 for more information.

## Epworth Auction is April 14

The 27th annual auction at Epworth United Methodist Church will be Saturday, April 14. Preview is at 11:30 a.m., and the auction begins at noon. Furniture and household goods, one-of-a-kind items, certificates for local businesses and themed baskets will be auctioned off. All proceeds support Epworth UMC, which is at 3207 37th Ave. S.

## Spring ReUse/Rummage Sale

Recycled goods will be available at the Spring ReUse/Rummage Sale, Saturday, April 28, from 9 a.m. to 3 p.m., at Epworth United Methodist Church. You'll find a wide variety of household items for every room in your house, as well as clothes for all ages and sizes, books, toys and craft materials. Coffee and bars will be for sale. Clean donations

appreciated; please call the church office at 612-722-0232 to arrange drop-off. Epworth is at 3207 37th Ave. S.

## Salad Luncheon at Bethany Lutheran April 21

Salad Luncheon at Bethany Lutheran Church (3901 36th Ave S) - Saturday, April 21, at noon. Dynamic story-teller Maren Hinderlie will present a program on "Memories to Bless with a Story." Delicious salads of many varieties will be served. Tickets are \$8.00. Contact the Bethany church office at 612-729-9376 or [office@bethanyon36th.com](mailto:office@bethanyon36th.com) to make reservations. All are welcome!

## Minnehaha Free Space open for business

The Minnehaha Free Space (3458 Minnehaha Avenue) has regular open hours from 2-7pm Monday-Friday and 1-5pm Saturday-Sunday, for free computer use, lending library, reading area, kids' room and more. For an up to date calendar of all events, or to get our email announcements, please visit our website: <http://minnehahafreespace.org>

All events at the Minnehaha Free Space, 3458 Minnehaha Ave., Minneapolis

Ongoing events: Saturdays 5:15-7:15 p.m. - The Icarus Project, community mental health support group Sundays 2-4 p.m. - Weekly meeting of Occupy Homes, organizing to stop foreclosures and evictions in Minneapolis; Sundays 6-9 p.m. - Weekly art group; Mondays at 7p.m. - Free movie night - see website for info.

Friday, March 30, 6:30-8:30 p.m. - "Resistance Across Borders" panel discussion. Free buffet-style meal at 6:30 p.m., Panel discussion at 7 p.m. featuring local immigrant rights and decolonization activists.

Friday, April 13, 7-10 p.m. - Slutwalk Minneapolis Open Mic. All survivors of sexual assault and their supporters welcome to share their stories, poetry, spoken word, etc.

Thursday, April 19, 4-6 p.m. - Insurgent Theatre company (touring the Midwest, based in Ohio) presents workshop about U.S. prison system.

Friday, April 20, 5-7 p.m. - Monthly Radfam (Radical Families) discussion group. FFI: [radfam.tumblr.com](http://radfam.tumblr.com)

## East Lake Library - Book Sale Donations

Save your books for the East Lake Library's spring sale! Whether or not your Spring Cleaning is also early this year, your excess books are very welcome at the spring Book Sale. Donations may be left

at the Library beginning April 27. Friends of the East Lake Library are holding the sale on Saturday, May 19, 10-4 and Sunday, 12-3. Find the Friends at: <http://www.supportclub.org/group/east-lake-library/>.

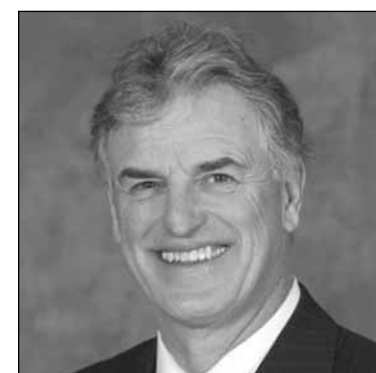
## Sweet On School Dance April 13 at Hiawatha

The 8th Annual Sweet On School Dance In Support of Public Education will take place on Friday, April 13 from 4-6 p.m. at Hiawatha Community School, 4201 42nd Av. S.

Please join us as we celebrate our wonderful schools and students. This event is open to the public and admission is free. Children must be accompanied by a parent or adult. Broadcast live on KFAI 90.3 FM and 106.7 FM.

## Peter McLaughlin to Speak at Healthy Seniors

Peter McLaughlin, Hennepin County Commissioner, will be the guest speaker at Longfellow/Seward Healthy Seniors 14th Annual Italian Dinner & Silent Auction on Thursday, April 26 from 6:00 - 8:00 p.m. at Minnehaha Academy-North Campus, 3100 W. River Parkway. Tickets for the Annual Dinner are \$35 and can be purchased through the Healthy Seniors office at 2800 E. Lake Street (inside the US Bank building) or by calling 612-729-5799. Proceeds go to help neighborhood seniors live independently at home.



Peter McLaughlin.

## Transition Longfellow presents: Mad City Chickens

The return of the urban backyard chicken! A sometimes humorous/sometimes serious look at people raising chickens in city backyards.

FREE Community Movie Night: Friday, April 20th, 6:30 p.m. Potluck (optional), 7:15 p.m. Movie, 8:20 p.m. Discussion and Guest Speaker TBD: "Chicken Farming in the City"

Location: Bethany Lutheran Church, 3901 36th Avenue South. Please contact us at 612-221-0131 for more information.

# Community education keeps up with the trends

Community Education is no longer just for your neighborhood knitters and painters. The business of Community Ed is evolving into a trend matching educational machine targeted at people of all backgrounds including professional adult learners.

Case in point, Roosevelt Community Education, located within Roosevelt High School at 4029 28th Avenue, has been increasing class diversity throughout the year adding business, technology, academic and creative programming to its evening

class schedule.

"Our goal is to find and keep up with trending ideas in the community. Fitness and technology are areas where such trends are most visible and it is easy for us to tap into those industries to offer classes to our students," explains Roosevelt High School Community Education coordinator, Jessica Ruth.

Trending right now are classes including Social Media Strategies for Small Businesses, Java Script Writing, Zumba and "Eat Local," a cooking series which

features all local ingredients varied by freshness and season. Speaking to the current political climate, Roosevelt Community Education is also offering a class covering behind the scene details and process of political debates starting this spring.

"We aim to offer exciting and experiential classes for everyone, at every age. Minneapolis Community Education offers programming for youth, adults and seniors and we're always coming up with interesting ideas to engage with our community," says

Patty Hastreiter, senior adult program coordinator for Minneapolis Community Education.

When asked how Community Education benefits students, Jody Bee, Yoga and Acting instructor for Minneapolis Community Education explained, "Minneapolis Community Education classes are reasonably priced and taught by local professionals. Your Spanish teacher will probably be a native Spanish speaker. Your Cooking instructor will be a local chef. Your fitness teacher will be well-trained and

experienced. I believe it is an undervalued service in our communities. Where else can you get 8 weeks of Spanish lessons for \$55?"

Look for your Minneapolis Community Education Citywide Tabloid of classes in your mailbox Mid March. Classes will also be available online after March 13th. Spring 2012 classes begin Monday, April 16th. Call your local Community Education office to register or visit [www.mplscommunityed.com](http://www.mplscommunityed.com) to browse and register for classes.

## Playground

Continued from page 2

In the first expansion design, the addition was located on top of the existing playground and pool. It will no longer extend that far south.

### TWO CONCEPTS PRESENTED

At the March community park meeting, attendees evaluated two concept plans. Concept one included one ball field, two soccer fields, two tennis court, and a playground/pool area where on ball field is currently located on the southwest side of the park property.

While this would position the playground close to the school, some residents were concerned about policing as the area would be difficult to see from the street, noted Bartels.

This would place the playground and pool near the school loading dock and garbage area, as well as next to a large gymnasium wall without windows, pointed out Walters. Additionally, the soil in this area is peat, and in order to put a playground there better soil would need to be hauled in, upping the cost of the project. In the past, this area was a swamp and a dump. The school will need to drive pilings in 90 feet in order to construct its addition in the area.

A representative from the Minnehaha Falls Athletic Club (MFAC) told attendees that their biggest need is for ball fields for youth games. "There are no other baseball diamonds in our area," said Walters. "They are all

**"The full extent of the improvements that will be presented in the plan will be determined at the next meeting."**

- Minneapolis Park and Recreation Board Project Manager  
Deborah Bartels

booked." The diamonds at Bossen Field are heavily used by adult leagues that pay rental for the fields.

With that knowledge, participants favored concept two, which retains two under-12 ball fields and two soccer fields.

The other big difference between concept one and two was the inclusion of tennis courts in concept one. However, given that there are new courts at 15th Avenue and Minnehaha Parkway, as well as at Lake Hiawatha Park and Lake Nokomis Park, the tennis courts were given a lower priority, according to Walters.

The concept favored by attendees locates the playground and pool in the southeast corner of the park land, in an area that has been open space since the tennis courts were removed in 2007 because they were in poor condition.

However, community members thought that the playground/pool concept number two as presented was too "formal" and instead preferred the "ambiguous" and "organic" design of concept one, said Walters.

Bartels is currently working to revise concept two. It will be presented to neighborhood residents at another community meeting; a

date has not yet been set for this meeting. "The full extent of the improvements that will be presented in the plan will be deter-

mined at the next meeting," stated Bartels. "We know that a wading pool and playgrounds will be included in the plan."

The parks department hopes to present the revised plan for Kee-wardin Park to the Parks and Recreation Board in May for approval.

### COST AND TIMING

After the final design has been approved, the parks department will solicit cost estimates. Then it will begin looking for funding sources. Because the school project was approved last November,

the parks department was not able to work these changes into its budget. A new wading pool/splash pad will cost about \$500,000, and a new playground about \$300,000. It could cost \$200,000 to fix the drainage issues on the athletic fields. The parks department has budgeted \$500,000 total to split between the service area of Morris, McRea, and Pearl in 2013.

Once funding is identified, the parks department will determine when the equipment will be installed. "There is a push to get the playground open by fall," said Walters.

## Neighborhood Churches Welcome You!

**Bethlehem Covenant**  
3141 43rd Ave. S. • 612-721-5768  
[www.bethlehemcov.org](http://www.bethlehemcov.org)

Children especially welcome  
(Handicapped accessible)  
Sunday School at 9:45 am (except April 8)  
Worship at 11 am  
Wednesday Evening Programs begin at 5:45 pm (except April 4)

**Holy Week**  
Maundy Thursday, April 5 Worship, 7 pm  
Good Friday April 6 Worship, 7 pm  
Easter Sunday, April 8 Worship at 9 and 11 am  
Easter Brunch at 10 am  
Pastor Ryan Eikenbary-Barber

**Christ Church Lutheran**  
3244 34th Ave. • 612-721-6611

Sunday Worship at 9:30 am  
Childcare Provided  
Education Hour at 11:00 am  
Pastor: Kristine Carlson  
A welcoming congregation  
[www.christchurchluth.org](http://www.christchurchluth.org)

**Epworth United Methodist**  
3207 37th Ave. • 612-722-0232

Sunday Worship 10:30 am  
(Childcare Provided)  
(Wheelchair Accessible)  
Rev. Pam Armstrong

**Faith Evangelical Lutheran (LC-MS)**  
3430 E. 51st St. • 612-729-5463

Worship 9 am  
Fellowship Hour 10:00 am  
Education Hour 10:30 am  
Maundy Thursday Worship 7 pm  
Good Friday Service 7 pm  
Easter Service 9 am (followed by breakfast)  
Pastor Michael Middaugh

**Holy Trinity Lutheran (ELCA)**  
2730 E. 31st St. • 612-729-8358  
[www.htlcmpls.org](http://www.htlcmpls.org)

Sunday Worship 8:45 & 11 am  
Education opportunities for all ages 9:45 am  
Childcare available  
Pastor: Jay Carlson  
Traditional Worship - Contemporary  
Message - A Call to Social Justice  
All are welcome - No exceptions

**Lake Nokomis Lutheran Church**  
5011 31st Ave. S. • 612-729-2323  
[www.lakenokomis.org](http://www.lakenokomis.org)

Summer Worship at 9:30 pm  
Sunday Worship at 8:00 am & 10:30 am  
Education Hour at 9:15 am  
(nursery; fully accessible)

**Minnehaha United Methodist**  
3701 E. 50th St. • 612-721-6231  
[www.minnehaha.org](http://www.minnehaha.org)

Traditional Service 9:00 am  
Contemporary Worship 11:15 am (Sept.-May)  
10:30 am (June-Aug.)  
Education for all ages 10:15 (Sept.-May)  
(Childcare; fully accessible)

**St. Albert the Great Catholic**  
E. 29th St. at 32nd Ave. S. • 612-724-3643

Sunday Mass 9:30 am (Childcare available)  
Saturday Mass 5:00 pm  
Daily Mass 8:15 am M,T, Th, F  
(Handicapped accessible)  
Saturday, April 7 Easter Vigil at 8 pm  
Easter Sunday, April 8 Masses at 9:30 & 11 am  
Fr. Joe Gillespie, O.P.  
[www.saintalbertthegreat.org](http://www.saintalbertthegreat.org)

**St. Peder's Evangelical Lutheran**  
4600 E. 42nd St. • 612-722-8000

Worship 9:00 and 10:30 am,  
Summer - 9:00 only  
Education for all at 9:00 am  
(Childcare; Wheelchair Acc., Braille)  
Coffee 10 am  
Julie A. Ebbesen, Pastor  
[www.stpeders.net](http://www.stpeders.net)

**Trinity Lutheran Church of Minnehaha Falls**  
5212 41st Ave. S. • 612-724-3691  
[www.trinityfalls.org](http://www.trinityfalls.org)

Sunday Worship 8:30 & 11 am  
Holy Week: See display ad for times  
Easter Worship: 7 am & 10 am  
AA Meeting Tuesdays/Sundays 7 pm

## LETTERS

### Buckthorn a problem in Minnehaha Park

The buckthorn in the Minnehaha dog park is now so dense in places that I can't get into the thorny thickets to pick up my dog's poop, but I can see that the feces are piling up in there. And because this is the river gorge and most of the dog poop is uphill from the Mississippi, much of it will wash down into the river, and the people downriver will have to clean it out of their drinking water.

But actually the real crime of not eradicating the buckthorn is that it's destroying an important

natural "flyway" of migratory birds. (The Mississippi is one of four major North American flyways.) This flyway provides habitat for many species but especially for migrating birds by supporting, for instance, the particular bugs that eat particular plants and feed particular birds.

In allowing this habitat to die out through neglect, we assist in the extinction of migratory birds.

Pat Kaluza

### Projects of the Neighborhood Churches Include:

Minnehaha Food Shelf,  
Serving People Tuesday 10:30 a.m. - 3:00 p.m.

Call us at 612-721-6231

Minnehaha United Methodist, 3701 E. 50th St.

# Classifieds

Messenger Want Ads are \$1 per word with a \$10 minimum. Send your remittance along with your ad to Messenger Classifieds, 1885 University Avenue, Ste. #110, St. Paul, MN 55104. Want ads must be mailed to the Messenger before April 16 for the April 26 issue. Ad copy can be e-mailed to [denisw@aplacetoremember.com](mailto:denisw@aplacetoremember.com). Call 651-645-7045 for more information. Your classified ad will also be automatically placed on the Messenger's website at [www.LongfellowNokomisMessenger.com](http://www.LongfellowNokomisMessenger.com)

## ACCOUNTING & TAXES

Individual and corporate tax returns prepared for small and medium sized companies. Accounting and payroll services performed in addition. Vern Teichroew Accounting, 612-726-1544 or [vteichroew@comcast.net](mailto:vteichroew@comcast.net). 9-12

## ADDITIONS

Martin Dynneson & Son - kitchens, bathrooms, roofing, siding, gutters, expert painting, and home repairs. 612-724-8819. 5-12

## BATHROOMS

Bathroom/kitchen!! Basement finishing. Bad water pressure? Sinks, toilets and tub/surrounds, etc. Ceramic tile. Basement bathrooms installed. Call 612-275-9815. 4-12

## COMPUTER REPAIR/SERVICE

Harmony PC computer repair, service, instruction. Service in your home. 20 years exp. State Courts, Microsoft. Woman-owned. 651-605-5804. [www.harmonyipc.us](http://www.harmonyipc.us) 11-12

## EMPLOYMENT

The Longfellow/Nokomis Messenger is looking for local reporters to write news and feature stories on a free-lance basis. Pay is based on small stipend per story. Journalism students or graduates are preferred, but not required. Prior newspaper experience a must. Send resume, cover letter and clips to: Longfellow/Nokomis Messenger, 1885 University Av. S., St. Paul, MN 55104.

## FOR SALE

For Sale: Vintage 1900-1949 lights, house hardware, doors, tubs, radiators, etc. Also furniture hardware. 651-644-9270. 20% off with ad. 4-12

## HALL FOR RENT

Spacious, clean and refurbished hall for rent. Parties, Birthdays, Weddings, Anniversaries, etc. call the Post @ 612-724-9909 or Gary @ 612-987-8857. BB-4-12

## HANDYMAN

Need a handyman?? Any job, big or small. Plumbing? Electrical? Remodeling? Decks? Leave it to "Dynamo Dave." Call me first and save money. 612-701-2272. Shhhh! Don't tell my wife, but my own home projects can wait because yours will always take priority! 12-12

Dr. House does it all: From a leaky faucet to a new addition. I can save you money on electrical and plumbing. Call John at 651-231-5652. B-12

## HAULING

Just Call, We Haul - We haul away almost anything from old furniture and appliances to yard waste and construction debris. We'll do all the loading and clean-up for you. For free estimate on cleaning your garage, attic, basement, and yard. Just call 612-724-9733. 4-12

## HOUSE CLEANING

House Cleaning & Pet Sitting, [smith.laura.laura955@gmail.com](mailto:smith.laura.laura955@gmail.com), 651-274-2212. B-12

## KITCHENS, DESIGN

[www.KitchenComfort.net](http://www.KitchenComfort.net) 1399 St. Clair, St. Paul. 651-698-4949. 12-12

Continued on page 15

# SERVICES • SERVICES • SERVICES • SERVICES

**AFFORDABLE QUALITY**  
612-270-3237 / SEAN  
**HARDWOOD FLOORING**  
Repair \* Refinishing \* Install \* Buff & Coat

**HANSON**  
BUILDING & REMODELING  
Home Remodeling and Repair.  
Local, Licensed, Insured.  
[www.HansonBuildingandRemodeling.com](http://www.HansonBuildingandRemodeling.com)  
Call Dan 612-655-4961

**NEWTON'S TREE AND STUMP SERVICE**  
Hard to reach stumps are no problem!  
Free estimates • Licensed & Insured  
612-727-2441

**Merriam Park Painting**  
• Exterior & Interior  
Painting - Enameling  
• Ceiling Texturing  
• Wallpapering  
• Free Estimates  
Call Ed 651-224-3660

**Spring Clean-Up**  
Landscaping • Lawnmowing Contracts  
Tilling - Edging  
Jim 612-275-6825

Treating your house like a home.  
**Painting by Jerry Wind**  
• Interior & Exterior Painting • Plaster/Sheetrock Repair  
• Wallpapering & Paper Stripping • Ceiling Texturing/Repair  
• Wood Stripping & Refinishing • Wood Floor Sanding & Refinishing  
METRO-WIDE FREE ESTIMATES  
VISA (612) 827-6140 or (651) 699-6140  
WWW.PAINTINGBYJERRYWIND.COM

**OLSON BUILDERS**  
MN LIC# BC604369  
Design • Build • Remodel • Maintain  
612-598-2983 OLSONBUILDERS.COM

**Nilles Builders, Inc.**  
Additions • Remodeling  
Renovation • Windows & Siding  
Concrete • Garages  
Licensed • Bonded • Insured #4690  
651-222-8701  
[www.nillesbuilders.com](http://www.nillesbuilders.com)

**With You at every step**  
Vintage Home Restoration • Remodeling Design & Build  
Decks • Stonework • Garages • Free Estimates  
PINECONE BUILDERS, INC. 763-370-8474  
MN Lic. #20217567 • Bonded & Insured • Local References

GENERATIONS OF CRAFTSMEN  
**DONNELLY STUCCO**  
Donnelly Stucco ... "The Process Is Our Product"  
Family Owned and Operated for Over 75 Years  
612-722-4200  
WWW.DONNELLYSTUCCO.COM  
STUCCO/RE-STUCCO/ REPAIRS/PATCHING/ MOISTURE INTRUSION  
Don't Delay, CALL NOW!  
WHERE OLD-FASHIONED CRAFTSMANSHIP NEVER GOES OUT OF STYLE

**Willies Rubbish Hauling**  
All Types of Rubbish Clean Up  
Residential Garage demolition  
Residential Cement demolition  
612-825-6511 • Cell: 612-310-5559 • Since 1972

**CAVANAUGH MASONRY, INC**  
RESTORATION & REPAIR  
Masonry Repair Specialist  
Scott Steps  
651-453-1781 Brick & Stonework  
Limestone Foundations  
MN LIC: BC264470

**IF YOU HAVE PUFFY EYES OR BAGS UNDER EYES - CALL MIKE 952-451-4395**  
I HAVE A PATENT PENDING ON A PRODUCT THAT MAY STOP THEM FROM FORMING. THIS IS NOT A CREAM THAT IS APPLIED TO THE EYES AND IT IS NOT ANY TYPE OF MEDICATION. IT IS A PILLOW THAT MAY STOP THEM FROM OCCURRING WHILE YOU SLEEP AND MAY REDUCE WRINKLING.  
I will give you \$50.00 to try my pillow.  
You do not have to purchase anything and you can keep the pillow.

**A-Tree Service Inc.**  
30 Years of Professional Service  
Owner/Operator Cleve Volk  
Licensed & Insured  
1849 E. 38th St.  
We accept DISCOVER VISA  
612-724-6045  
Firewood, Hay and Small Trees for Sale  
[www.atreeservices.com](http://www.atreeservices.com)

PHOTOVOLTAIC SYSTEMS • SHINGLE ROOFS • CEDAR ROOFS • SLATE ROOFS • TILE ROOFS • ROOF REPAIR • METAL ROOFS • RUBBER ROOFS • GUTTERS AND DOWNSPOUTS • CHIMNEY REPAIR AND REBUILDING • SKYLIGHTS • FLAT ROOFS

**We're not your average roofing company.**

**We're a full service roofing contractor.**

**GARLOCK-FRENCH CORPORATION**  
Providing peace of mind since 1932  
Phone: 612-722-7129 • [Garlock-French.com](http://Garlock-French.com) • MN License #0001423  
• ROOF MAINTENANCE • GREEN ROOFS • CEDAR TREATMENT • ICE DAM REMOVAL • CUSTOM COPPER WORK •

**Low Rates Nokomis Concrete Free Estimates**  
"When Quality Counts"  
All your flatwork concrete needs  
• Patios • Sidewalks • Steps • Driveways • Garage Floors  
Licensed (L303), bonded, insured  
25 years experience  
Call Ben  
10% Discount with this Ad 612-822-7959  
**Plus Senior Discount**  
[www.NokomisConcrete.com](http://www.NokomisConcrete.com)

**RIDGE CONSTRUCTION LLC.**

• Kitchens • Bathrooms  
• Additions • Garages  
• Basements • Brick Patios

Locally owned & operated  
[www.ridgeconstructionllc.com](http://www.ridgeconstructionllc.com)  
(612)382-9386  
Lic # 20638502

# Classifieds

Continued from page 14

## LANDSCAPING

Dragonfly Design and Landscape LLC. Quality landscaping at affordable prices. All areas of landscaping. 612-529-5957. Credit cards accepted. 4-12

## LAWN CARE

Sorensen Lawn Care serving St. Paul for 17 years. Services include mowing, spring and fall clean-ups, aeration, fertilization, mulch installation, emerald ash borer treatment. Call Jeff 651-695-1230. 6-12

## OLDER ADULTS

65-plus programs in Longfellow and Seward: yoga, support groups for the visually impaired, foot care and blood pressure clinics, senior socials and health talks, volunteering, nursing services, and more. Call (612) 729-5799 for information. Longfellow/Seward Healthy Seniors. 4-12

## PAINTING

Interior/exterior painting, enameling, plaster patching, free estimates. Bob. 651-633-5565. 12-12

Interior/exterior painting, wallpaper removal, small wall repair, average garage \$250, average 3 rooms \$250. Jim 651-698-0840. 6-12

## PANCAKE BREAKFAST

Join us for Pancake Breakfast on the 4th Sunday of each month. From 8:00 a.m. to noon. Wold Chamberlain, American Legion Post 99, Pancake Breakfast. All you can eat pancakes. Adults \$6. Children \$3. Includes 3 sausages, juice, milk & coffee. Eggs are \$.25 each. Prepared anyway you want. Address is 5600 - 34th Ave. So. Phone. 612-724-9909. February 26, March 25, April 22 and May 27. 4-12

## PIANO TUNING

Registered Piano Technician, charlesfruhstuck@mac.com, 651-489-3181. B-12

Quality piano tuning and repair. Reasonable rates. Call Robert Clough @ 612-722-7586 or e-mail: robtclough@aol.com. 12-12

## REAL ESTATE

Flourish Realty LLC. Full Service Real Estate/Property Management Services. Local Realtor(R), Ecobroker(R), & Resident, Daniel Schultz: 612-408-0233, dan@flourishrealty.net 7-12

## RENTALS

Office or therapy space for rent: On bus route. Easy access to light rail. Located at Minnehaha Ave S. and 42nd St. Open to build out. 2nd floor office space available. Call Jim between 8 a.m. - 2 p.m. 612-729-2316 or email: KRZ@NEL-SONELECTRICINC.COM. 4-12

## SERVICES

Sheetrock, tape, texture, paint, free estimates. Dick Evans, 612-889-9228, 952-888-0600. 5-12

Trust a neighbor to do the job right! Need a handyman?? Any job, big or small. Plumbing? Electrical? Remodeling? Decks? Etc. Call "Dynamo Dave." 612-701-2272. Free estimates! 12-12

Concrete work: Steps, sidewalks, patios, driveways. Licensed, bonded, insured. Call Tom Seemon, 612-721-2530. 11-12

Bathrooms, General Carpentry, Trim and Doors, Sheetrock and Repair. Mike 612-578-1611, 651-762-4705. B-12

Home remodeling/repair. Carpentry, basement, bathroom remodeling and design to include all handyman services. All calls returned same day. Always on time. Licensed and insured. Member BBB. Jeff 612-388-2258. www.grosscupremodeling.com B-12

Tuckpointing and repairs, steps, chimney and foundations, stucco repairs. Basement walls and flooring. Basement ceilings. 30 yrs Curt 651-698-4743. 4-12

Hanson Building and Remodeling Home Remodeling and Repair. Local, Licensed, Insured. www.HansonBuildingandRemodeling.com Call Dan 612-655-4961. 6-12

## TUTORING

Retired Minneapolis teacher will tutor your 2nd through 7th grade students. \$15 half hour. Call 612-239-3622, Launa. 4-12

Smarter and Smarter. Give your 1st - 7th grader a boost. One student (\$30/hr) or two together (\$40/hr) with retired Mpls. teacher. Call 612.239.3622. Special rate for low-income families. 4-12

## WANTED

\*\*WANTED\*\* - Old Stereo Equipment, Hi-fis & Hams. Andy 651-329-0515. 12-12

## WANTED TO BUY

Paying the most for your furniture, dishes, glassware, knickknacks, costume jewelry, antiques, pictures, lamps, household items, etc., I make housecalls. Call Mary. 612-729-3110. 5-12

# Hale-Field Plant Sale coming soon

Our annual community plant sale is a great way to plan for spring while providing funds for Hale and Field Schools. This sale is open to all of our community, friends and family, whether you have ordered before or are interested for the first time.

Pre-orders will be taken from March 14 - Apr. 11. Beginning March 14th, use the link at [www.HaleFieldPTA.com](http://www.HaleFieldPTA.com) to shop the plant sale on line. You will find descriptions and photo-

graphs of all the plants so you can actually see the difference between the varieties of plants and their colors. Look for mixed container planting suggestions and other gardening ideas and accessories. All of our plants and flowers are provided by Pahl's Nursery, one of Minnesota's premier family-owned nurseries. The plants, flowers, vegetables, grasses and perennials are always of the highest quality.

Paper order forms will also

be available at the Hale and Field school offices, several local merchants, community centers, and libraries after March 10th. All orders will be available for pick up on Saturday, May 12 - just in time for Mother's Day - at Hale School. We will also have a separate Garden Store open that day for last minute items. Please help us support our great neighborhood schools and beautify your garden at the same time!

**BEAVER TREE SERVICE**  
"Mpls. licensed since 1978"  
612-727-1671  
Dave Currier  
"Former owner of Nokomis Tree"

**Borden Window LLC.**  
Keep your old windows  
We turn old drafty windows into energy efficient tilt-in windows  
**BordenWindow.com**  
651-338-7163

**SIDING TRIM**  
**WINDOWS ROOFING**  
**CALL HAROLD**  
LICENSED BONDED INSURED  
SINCE 1969 # 4360  
612-729-8094 952-888-4952

**LAWN SERVICE**  
**KERN**  
LAWN SERVICE, INC.  
Plowing and Snow Removal  
Total Lawn Maintenance  
Large or Small Landscaping Projects  
Office: 651-207-5396  
Cell: 612.328.6893  
Since 1984 / Major Credit Cards Accepted  
[www.kernlawnservice.com](http://www.kernlawnservice.com)  
**LANDSCAPING**

**BRATT**  
licensed & insured free estimates  
**TREE COMPANY**  
Professional Quality Service  
Reasonable Price  
• Trimming • Removal  
• Storm Damage Clean-Up • Stump Grinding  
Check out our website [www.bratttree.com](http://www.bratttree.com)  
for an easy way to get a free estimate  
Stan, Jon and Wally • 612-721-4153

**SUBSTAD PLUMBING COMPANY, LLC**  
612-724-1342  
Serving our customers in South Minneapolis for over 50 years  
Dan Substad - Owner  
Master License 0055152

**Apollo's Finesse Painting**  
interior/exterior  
Reasonable!  
Competent!  
Reliable!  
Ready!  
-insured-  
for appointments call Joel at 612-703-6317

**FIRST TIME BUYERS**  
Why rent when you can own?  
Free list w/pics of homes available for over \$800/month\*  
Free recorded message  
1-800-706-3516  
ID# 2032  
Bill Hansen & Associates Realtors

[www.buck-bros.com](http://www.buck-bros.com)  
We live & work in your neighborhood.  
Residential Additions, Restorations, Baths, and Kitchens  
**BUCK BROTHERS CONSTRUCTION**  
Call us at: 612.729.7608  
or email Bob at: bob@buck-bros.com

**AL SANDEEN**  
Concrete & Masonry, LLC  
Concrete, Block, Brick, Stone & ICFs  
**612-729-1298**  
[www.SandeenConcrete.com](http://www.SandeenConcrete.com)  
FREE ESTIMATES • 30 YRS EXP • EXCAVATION AVAILABLE

**THINK STUCCO**  
by Donnelly Brothers  
612.721.2011  
5928 Portland Avenue South  
Minneapolis, MN 55417  
[think-stucco.com](http://think-stucco.com)  
License BC638389

**Anderson BUILDING & REMODELING**  
Building your dreams  
MNLIC#20315306  
**612.616.0283**  
[www.andbuild.com](http://www.andbuild.com)

**Expert Concrete Installation and Foundation Repair.**  
Waterproofing Walks/Steps Patios Stamped Concrete Garage Floors Block Repair  
Driveways Glass Block Windows Resurfacing Egress Windows  
Brick Repair Landscape Grading Retaining Walls  
Wellroom Repair Basement Floors Drain Tile Systems Repaired  
Wall Stabilization or Replacement **STABIL WALL**  
**GARDNER CONSTRUCTION, INC.**  
Licensed • Bonded • Insured  
Call for free estimate  
**(612) 850-6335**  
[www.gardnerconstructioninc.com](http://www.gardnerconstructioninc.com) MN Lic. 20066893

# Visual artist partners with Hiawatha Community School

This winter Hiawatha Community School Principal Deb Regnier, partnered with visual artist, Kate Van Cleve, to create an art focus workshop for her students. The Principal envisioned large murals for the hallways of her school.

Van Cleve began with an introduction to art discussing color, composition, and content. The kids looked at a wide range of artists and creative styles. Students also received an over view on the use of various materials.

Each grade level collaborated and completed a large canvas. Subject matter included various themes such as the rainforest, animals, and school pride. The kids explored landscape, still life and portraiture. In addition to the large work, the students worked on smaller collages and observational drawings.

The completed large works from Hiawatha Community School will be on display at the school through the end of the year. The smaller works will be on exhibit at the Riverview Café (3753 42nd. Ave. S.) for the month of May. There will be a reception for the artists on Tuesday, May, 8, from 4:30 to 6:30 p.m. Live music will be provided by violinist Lisa Jensen and acoustic artists Camille and Tracy Fredin. (Photo by Tom Johnson)



## XL Pipeline Film Screening

The forty-minute documentary, "Pipe Dreams," will be shown on Thurs., Apr. 19, at 7 p.m. and on Sun., Apr. 22, at 12:30 p.m. at Holy Trinity Lutheran Church, 2730 East 31st St. No charge. Free will offering for refreshments. All are welcome. Academy Award nominated director Leslie Iwerks traces the proposed path of the Canadian Keystone XL pipeline across the Ogallala Aquifer and the fragile Sandhills of Nebraska with interviews with the ranchers and farmers whose land lies in the pipeline's path. 612-729-8358 or www.htlcmpls.org

## Augustana Apartments holds speaker series

Augustana Apartments of Minneapolis will hold their Word

to the Wise Speaker Series on Thursday, April 12th from 1:30 p.m.-2:30 p.m. at Augustana Apartments of Minneapolis, 1510 11th Ave S., Minneapolis, MN 55404. The speaker will be Dr. David Hilden with "Healthy Matters. Please RSVP by April 9th to 612-238-5255. There will be a complimentary dessert bar, door prizes and tours of the facility.

## Epworth Church's 26th Annual Auction

On Saturday, April 14, 2012, Epworth United Methodist Church will hold its 26th Annual Auction. Collectibles, furniture and business donations will be available for preview beginning at 11:30 p.m. Auction will start at 12 p.m. Food will be available for purchase throughout the afternoon. Epworth United Methodist Church

is located at 3207 37th Avenue South, (Corner of 37th Avenue and 32nd Street). For More Information: Please call 612-724-8613.

## Annual Spring Rummage Sale!!

On Saturday, April 28, Epworth United Methodist Church will hold its annual Spring Rummage Sale from 9 a.m. to 3 p.m. There will be a "bag sale" starting at 2 p.m. Food will be available for purchase throughout the event. Epworth United Methodist Church is located at 3207 37th Avenue South (Corner of 37th Avenue and 32nd Street) Minneapolis, Minnesota For more information: please call: 612-722-0232.

## Restorative Justice Training: April 20-22

Seward Longfellow Restorative Justice Partnership receives referrals from the Minneapolis Police Department of youth who have committed low-level offenses in Seward and Greater Longfellow.

Restorative conferences bring together the person who has caused the harm, community members and trained facilitators in a conference to discuss how the person's actions caused harm and to make a plan for how the person will repair the harm. At the training, April 20-22, you will learn about restorative justice and restorative conferences in order to become a facilitator.

Contact Michele Braley at 612-338-6205 x108 or michele@sng.org

for more information about the training and a registration form or to inquire about other ways to get involved.

Next deadline:  
April 16  
Next issue:  
April 26

For more information  
call 651-917-4183

## Redistricting

Continued from page 5

Kingfield neighborhood, 11 picks up the Field neighborhood and a slice of the Keewaydin neighborhood to achieve population balance."

Quincy said he was glad that the 11th ward has retained the entirety of the Wenonah neighborhood, since his office has been working on keeping the ward's Bossen area more livable for residents and safer for the entire area.

Kent Knopp-Schwyn, chair of the Nokomis East Neighborhood Council, (NENA), said the neighborhood organization was not as affected by the redistricting as it was by the end of the Neighborhood Revitalization Program (NRP). George Jelatis, another NENA board member, agreed.

"The end of the NRP program had a big impact; it was the end of a 20-year period of long-term funding for neighborhood wards. There is a new program, but the funding is less and the program is philosophically very different," Jelatis said.

Jelatis said both the Longfellow and Nokomis neighborhoods are changing. "They're

a lot younger, with many more kids. More people are moving downtown. There are shifts in population."

Regarding the proposed redistricting changes, Charter Commission Chair Barry Clegg said there could well be some changes or cleaning up of neighborhood boundaries after the hearings. "I'm not sure how significant the changes could be," he said. Clegg said it was understood that no one would be entirely happy with the redistricting alterations.

"Different competing interests determine how the wards are drawn," Clegg said. He said that although the population of Minneapolis as a whole has not changed that much in the past 10 years, a couple of wards had enough growth and a couple enough loss of population that under law, the boundaries had to be moved.

"By the time you change one ward, it affects another and then another," he said.

"We also have the Voting Rights Act to consider," Clegg noted. "We try to have the maximum ability for minority groups to have representation."

The final vote on the maps was not yet taken by the time the Messenger went to press.



"If you are like the 'old me,' who knew nothing about fitness, or was intimidated about going to the gym – the YWCA is a great place to feel welcome and inspired! From the great staff at the front desk who always know my name to the trainers who have encouraged me. I feel like family here."

- Bonnie, lost more than 130 pounds, now a workout fanatic and fitness blogger, YWCA member since 2008.

## Your choice of deals in April

**\$19**  
Joiners Fee

12-Month Commitment Required

**\$79**  
Joiners Fee

Month-to-Month Membership

Both offers are good on new Adult, Family, Student and Young Professional memberships. Some exceptions apply. [www.ywcampls.org](http://www.ywcampls.org)

The Power to Soar™

eliminating racism  
empowering women **ywca**  
MINNEAPOLIS